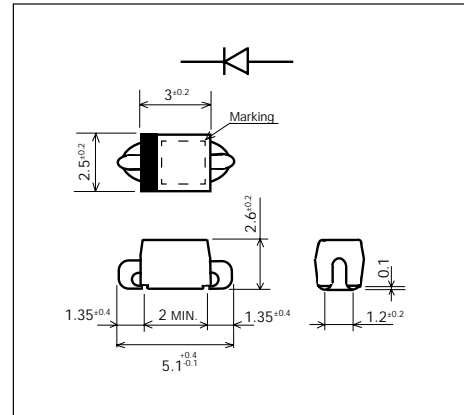


## SCHOTTKY BARRIER DIODE

### Outline drawings, mm



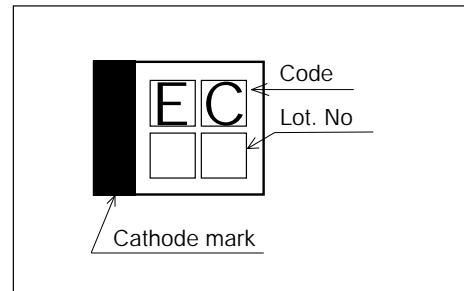
### Features

- Surface-mount device
- Low  $V_F$
- Super high speed switching
- High reliability by planer design

### Applications

- High speed switching

### Marking



### Maximum ratings and characteristics

- Absolute maximum ratings

Item	Symbol	Conditions	Rating	Unit
Repetitive peak reverse voltage	$V_{RRM}$		60	V
Non-repetitive peak reverse voltage	$V_{RSM}$	$t_w=500ns, duty=1/40$	60	V
Average output current	$I_o$	Resistive load $T_I=111^\circ C$	1.0*	A
Surge current	$I_{FSM}$	Sine wave 10ms	30	A
Operating junction temperature	$T_j$		-40 to +150	$^\circ C$
Storage temperature	$T_{stg}$		-40 to +150	$^\circ C$

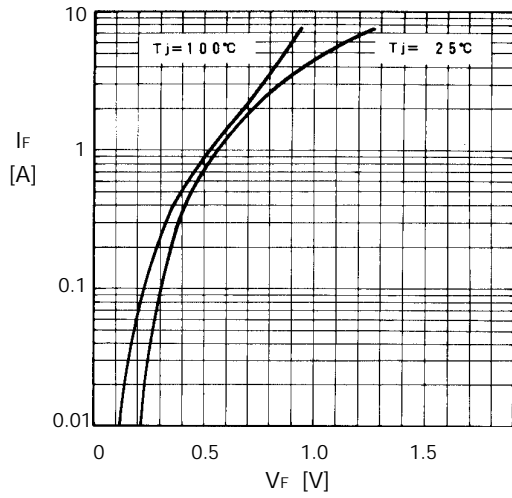
\* Mounted on printed circuit board (15 x 15mm)

- Electrical characteristics ( $T_a=25^\circ C$  Unless otherwise specified)

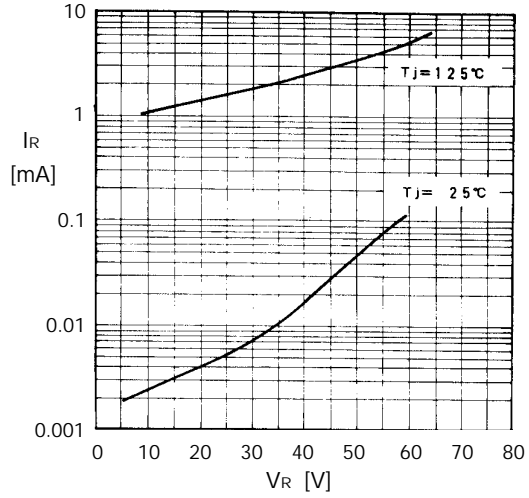
Item	Symbol	Conditions	Max.	Unit
Forward voltage drop	$V_{FM}$	$I_{FM}=1A$	0.58	V
Reverse current	$I_{RRM}$	$V_R=V_{RRM}$	2.0	mA
Thermal resistance	$R_{th(j-l)}$	Junction to lead	15*	$^\circ C/W$

Characteristics

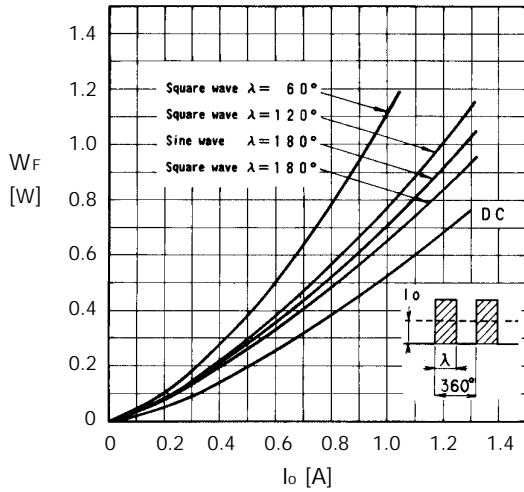
Forward characteristics



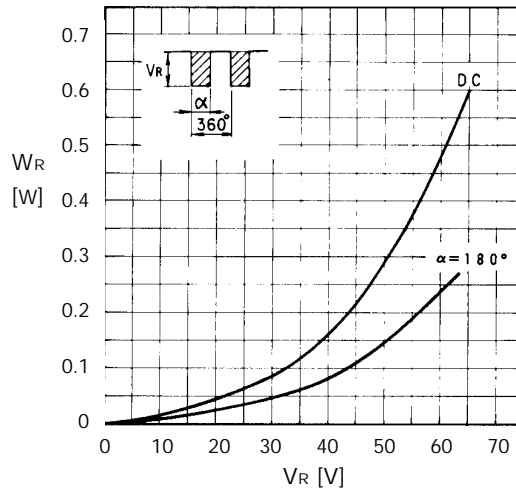
Reverse characteristics



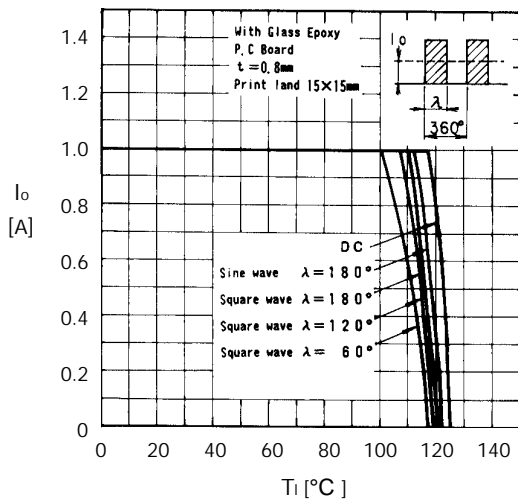
Forward power dissipation



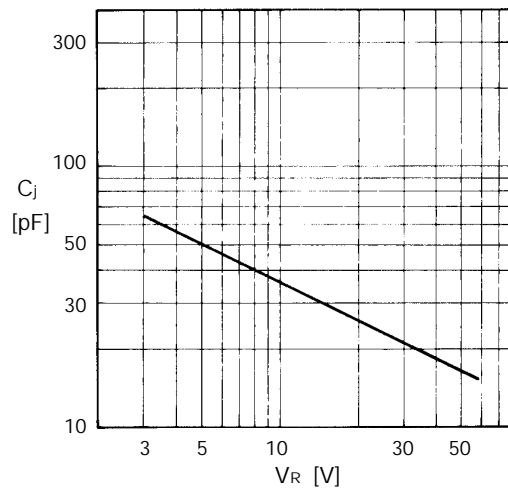
Reverse power dissipation



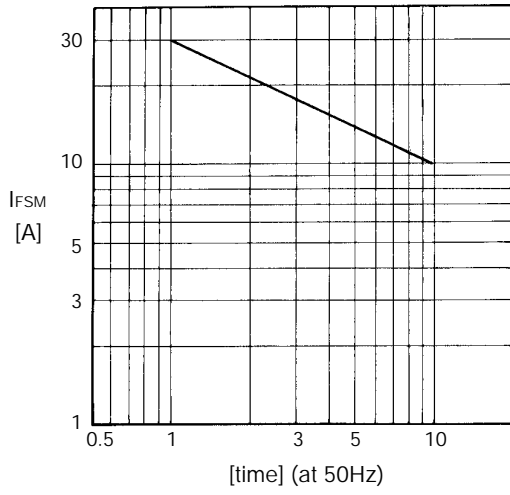
Current derating ( $I_o$ - $T_i$ )



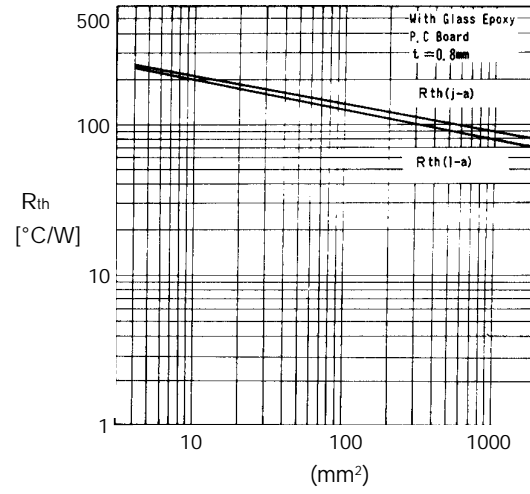
Junction capacitance characteristics



Surge capability



Thermal resistance print land



Transient thermal impedance

