

## ST2910 Series

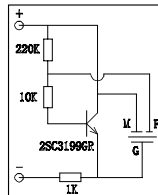
Specifications:

Parameters	Units	ST2910AAP
▶ Min Sound Pressure Level at 30cm	dBA	80
Rated Voltage	Vdc	12
Operating Voltage	Vdc	3 - 28
Resonance Frequency	Hz	3000 ± 500
▶ Typical Operating Current	mA	8
Operating Temperature	°C	-20 - +60
Case Material	-	ABS
Weight	g	3.2

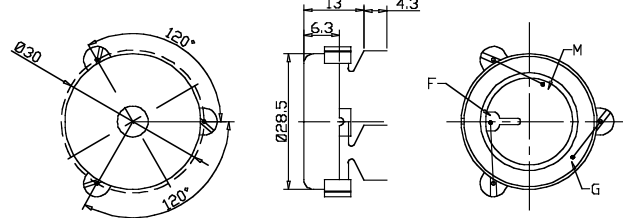


Unit: mm • Tolerance: ±0.5mm

▶ Value applying rated voltage with recommended circuit



Recommended Circuit



## ST3011 Series

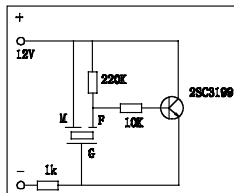
Specifications:

Parameters	Units	ST3011AAP
▶ Min Sound Pressure Level at 10cm	dBA	88
Rated Voltage	Vdc	12
Operating Voltage	Vdc	3 - 20
Resonance Frequency	Hz	3500 ± 500
▶ Typical Operating Current	mA	10
Operating Temperature	°C	-20 - +70
Case Material	-	ABS
Weight	g	5.0

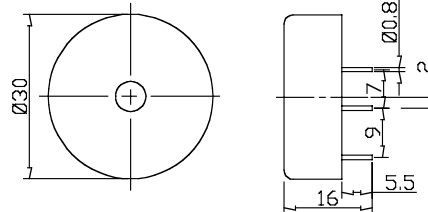


Unit: mm • Tolerance: ±0.5mm

▶ Value applying rated voltage with recommended circuit



Recommended Circuit



## ST3012 Series

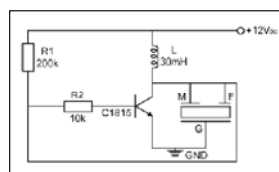
Specifications:

Parameters	Units	ST3012AHP
▶ Min Sound Pressure Level at 30cm	dBA	88
Rated Voltage	Vdc	12
Operating Voltage	Vdc	1.5 - 24
Resonance Frequency	Hz	3500 ± 500
▶ Typical Operating Current	mA	12
Operating Temperature	°C	-20 - +70
Case Material	-	PBT
Weight	g	5.0



Unit: mm • Tolerance: ±0.5mm

▶ Value applying rated voltage with recommended circuit



Recommended Circuit

