

## ST2412 Series

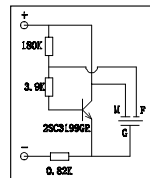
Specifications:

Parameters	Units	ST2412ANP
▶ Min Sound Pressure Level at 30cm	dBA	80
Rated Voltage	Vdc	12
Operating Voltage	Vdc	3 - 28
Resonance Frequency	Hz	3000 ± 500
▶ Typical Operating Current	mA	10
Operating Temperature	°C	-30 - +80
Case Material	-	Noryl
Weight	g	3.4

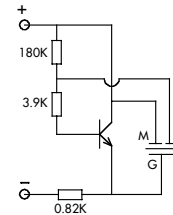
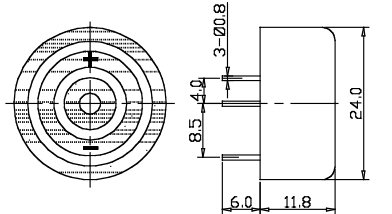


Unit: mm • Tolerance: ±0.5mm

▶ Value applying rated voltage with recommended circuit



Recommended Circuit



## ST2580 Series

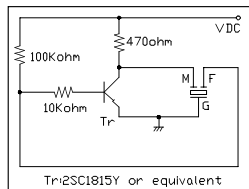
Specifications:

Parameters	Units	ST2580ANP
▶ Min Sound Pressure Level at 10cm	dBA	80
Rated Voltage	Vdc	12
Operating Voltage	Vdc	3 - 20
Resonance Frequency	Hz	3500 ± 500
▶ Typical Operating Current	mA	20
Operating Temperature	°C	-40 - +85
Case Material	-	Noryl
Weight	g	2.4

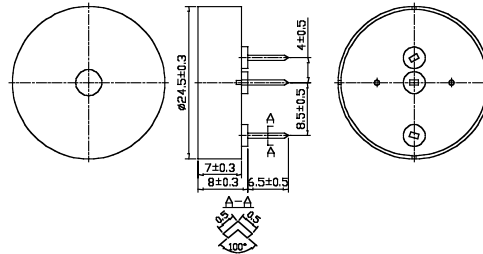


Unit: mm • Tolerance: ±0.5mm

▶ Value applying rated voltage with recommended circuit



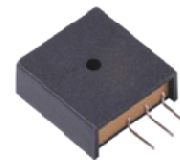
Recommended Circuit



## ST2510 Series

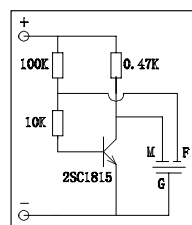
Specifications:

Parameters	Units	ST2510ANP
▶ Min Sound Pressure Level at 10cm	dBA	90
Rated Voltage	Vdc	12
Operating Voltage	Vdc	3 - 20
Resonance Frequency	Hz	3200 ± 500
▶ Typical Operating Current	mA	20
Operating Temperature	°C	-30 - +115
Case Material	-	Noryl
Weight	g	3.5



Unit: mm • Tolerance: ±0.5mm

▶ Value applying rated voltage with recommended circuit



Recommended Circuit

