



SMT Current Sensor – T6522-AL



This low cost transformer is designed for use at 50 kHz to 300 kHz to sense continuous currents up to 3 Amps. The current windings can be connected in series to provide twice the output sensitivity. It offers 500 Vrms interwinding isolation.

The small footprint, low profile, surface mount ceramic case makes it ideal for high-density boards and provides an excellent surface for pick and place operations.

Applications include power supply feedback control, motor protection, overload sensing and detecting load drop or shutdown.

To request free evaluation samples, contact Coilcraft or visit www.coilcraft.com.

Part number ¹	Turns (N) ² pri : sec	Inductance ³ min (mH)	DCR max Ohms		Frequency range (kHz)	Sensed current max I_{in}	Volt-time product ⁴ (V- μ sec)	R_T for 1 V_{out} from 1 A I_{in} ⁵
			1,2 – 5,6	3 – 4				
T6522-AL_	1 : 50	3.4	0.006	0.70	50 – 300	3 A	30	50 Ohms

1. When ordering, please specify **packaging** code:

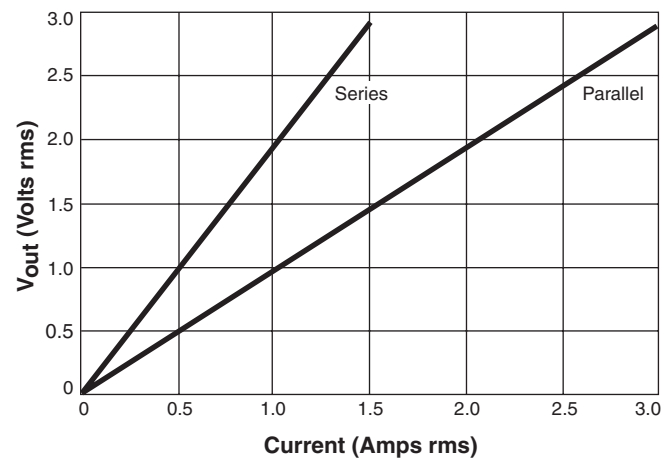
T6522-AL D

Packaging: **D** = 13" machine ready reel. EIA-481 embossed plastic tape (750 per full reel).

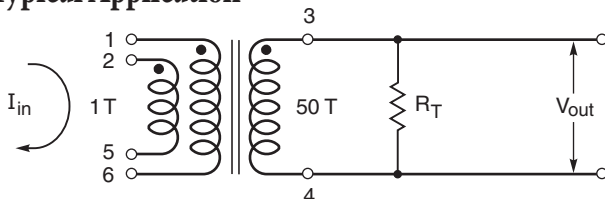
B = Less than full reel. In tape, but not machine ready. To have a leader and trailer added (\$25 charge), use code letter D instead.

- The two primary windings may be connected in parallel (1 : 50) to provide up to 3 A (I_{in}) sensing capability (3 V_{out}), or connected in series (2 : 50) to provide twice the sensitivity (1 A I_{in} yields 2 V_{out}).
- Inductance is for the secondary, measured at 100 kHz, 0.1 Vrms.
- Maximum volt-time product for the secondary.
- Varying terminating resistance increases or decreases output Voltage/Ampere according to the following equation:
 $R_T = V_{out} \times N_{sec} / I_{in}$.
- Operating temperature range -40°C to $+85^\circ\text{C}$.
- Electrical specifications at 25°C .

Typical Response (with $R_T = 50$ Ohm)



Typical Application



Coilcraft[®]

Specifications subject to change without notice.
Please check our website for latest information.

Document 369-1 Revised 03/20/07

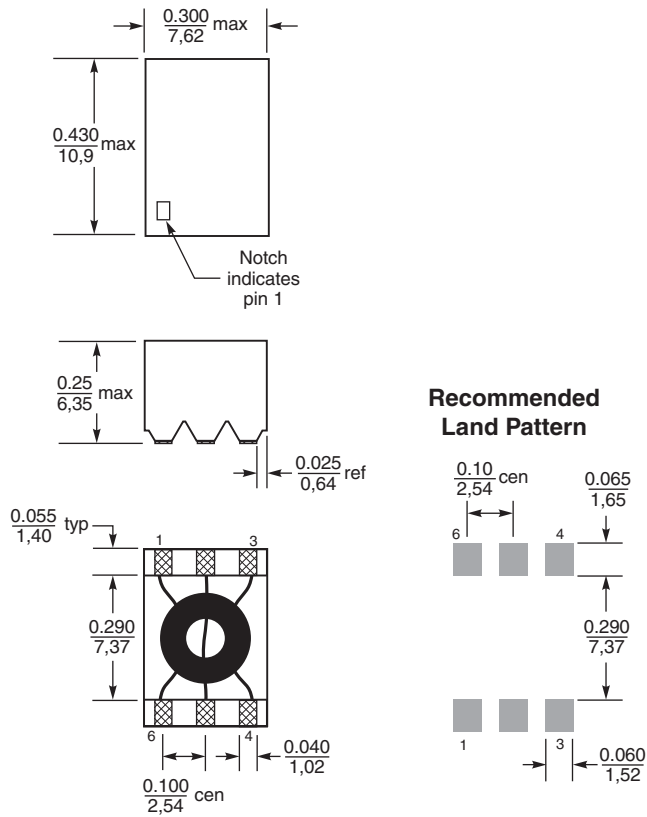
1102 Silver Lake Road Cary, Illinois 60013 Phone 847/639-6400 Fax 847/639-1469

E-mail info@coilcraft.com Web <http://www.coilcraft.com>



SMT Current Sensor – T6522-AL

Dimensions



Weight: 0.9 g
Termination: Tin-silver-copper over silver-palladium-platinum
Tape and reel: 750/13" reel 24 mm tape width
 For packaging data see Tape and Reel Specifications section.

Coilcraft[®]

Specifications subject to change without notice.
 Please check our website for latest information.

Document 369-2 Revised 03/20/07

1102 Silver Lake Road Cary, Illinois 60013 Phone 847/639-6400 Fax 847/639-1469

E-mail info@coilcraft.com Web <http://www.coilcraft.com>

© Coilcraft, Inc. 2007