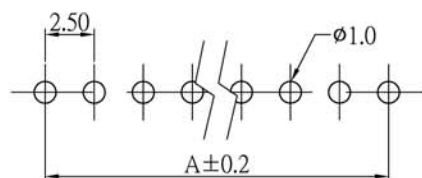
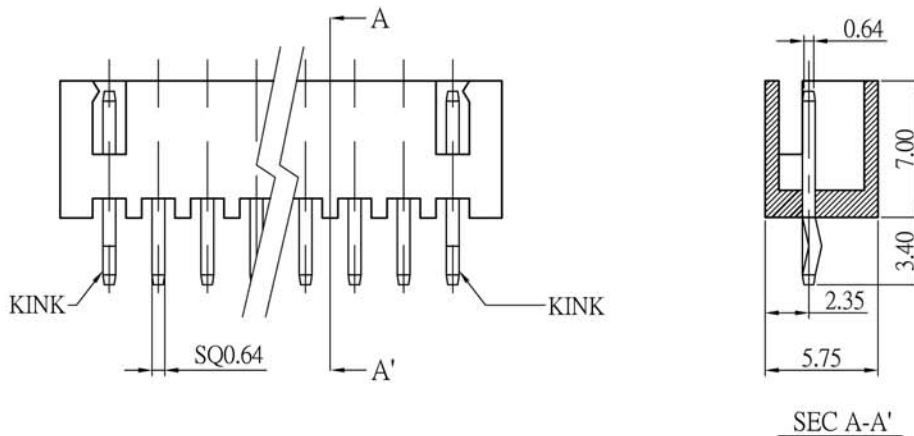
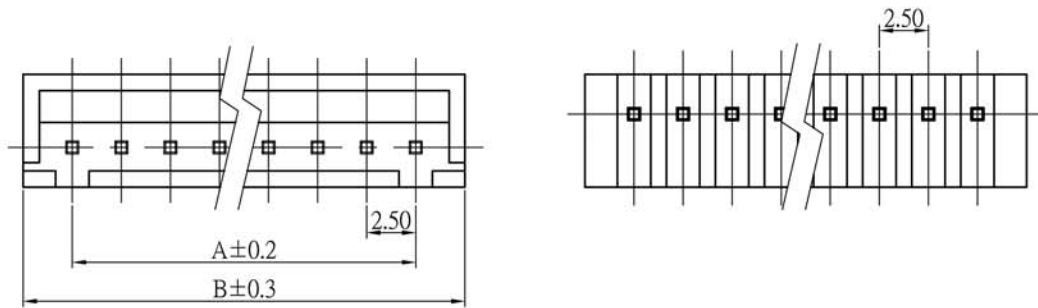
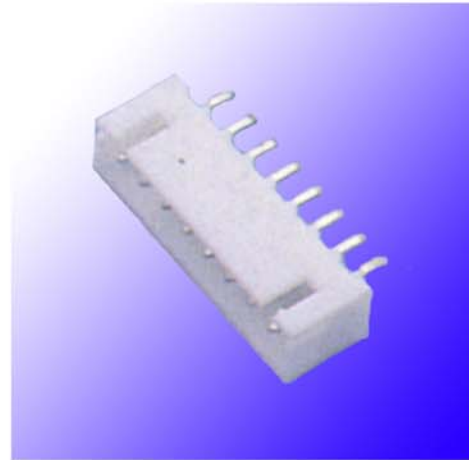


MATERIAL :

TERMINAL MATERIAL : BRASS / TIN-PLATED
INSULATOR : NYLON 66 (UL 94V -0)

SPECIFICATIONS :

CURRENT RATING : 3A AC, DC
VOLTAGE RATING : 250V AC MAXIMUM
CONTACT RESISTANCE : 10M OHMS MAX
INSULATION RESISTANCE : 1000M OHMS MIN
OPERATING TEMP : -25°C ~ +85°C



RECOMMENDED P.C.B HOLE LAYOUT

CIRCUITS	PART NO.	DIM A	DIM B
2	WB250B-S02T1	2.50	7.50
3	WB250B-S03T1	5.00	10.00
4	WB250B-S04T1	7.50	12.50
5	WB250B-S05T1	10.00	15.00
6	WB250B-S06T1	12.50	17.50
7	WB250B-S07T1	15.00	20.00
8	WB250B-S08T1	17.50	22.50
9	WB250B-S09T1	20.00	25.00
10	WB250B-S10T1	22.50	27.50
11	WB250B-S11T1	25.00	30.00
12	WB250B-S12T1	27.50	32.50
13	WB250B-S13T1	30.00	35.00
14	WB250B-S14T1	32.50	37.50
15	WB250B-S15T1	35.00	40.00
16	WB250B-S16T1	37.50	42.50
17	WB250B-S17T1	40.00	45.00
18	WB250B-S18T1	42.50	47.50
19	WB250B-S19T1	45.00	50.00
20	WB250B-S20T1	47.50	52.50