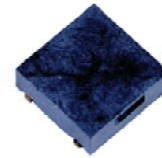


MTS1035 Series

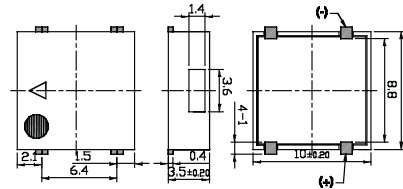
Specifications:

Parameters	Units	MTS1035A04LM
▶ Min Sound Pressure Level at 10cm	dBa	93
Rated Voltage	V _{o-p}	3.6
Operating Voltage	V _{o-p}	2 - 4
Resonance Frequency	Hz	2830
▶ Max Operating Current	mA	80
Coil Resistance	Ω	18 ± 3
Operating Temperature	°C	-30 - +85
Case Material	-	LCP
Weight	g	0.6



▶ Value applying rated voltage (1/2 duty square wave, resonance frequency)

Unit: mm • Tolerance: ±0.5mm



MTS1310 Series

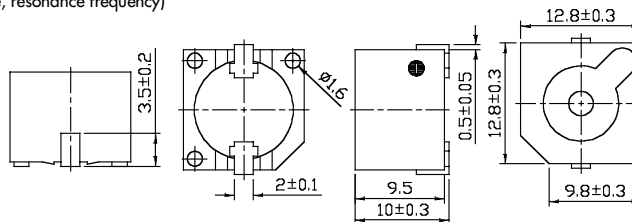
Specifications:

Parameters	Units	MTS1310A03LM	MTS1310A05LM	MTS1310A12LM
▶ Min Sound Pressure Level at 10cm	dBa	90	90	90
Rated Voltage	V _{o-p}	3	5	12
Operating Voltage	V _{o-p}	2 - 5	4 - 7	8 - 16
Resonance Frequency	Hz	2400	2400	2400
▶ Max Operating Current	mA	60	60	40
Coil Resistance	Ω	25 ± 5	41 ± 5	140 ± 14
Operating Temperature	°C	-30 - +85	-30 - +85	-30 - +85
Case Material	-	LCP	LCP	LCP
Weight	g	2.8	2.8	2.8



▶ Value applying rated voltage (1/2 duty square wave, resonance frequency)

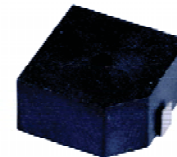
Unit: mm • Tolerance: ±0.5mm



MTS1370 Series

Specifications:

Parameters	Units	MTS1370A05LM
▶ Min Sound Pressure Level at 10cm	dBa	90
Rated Voltage	V _{o-p}	5
Operating Voltage	V _{o-p}	4 - 7
Resonance Frequency	Hz	2400
▶ Max Operating Current	mA	60
Coil Resistance	Ω	41 ± 5
Operating Temperature	°C	-30 - +85
Case Material	-	LCP
Weight	g	2.8



▶ Value applying rated voltage (1/2 duty square wave, resonance frequency)

Unit: mm • Tolerance: ±0.5mm

