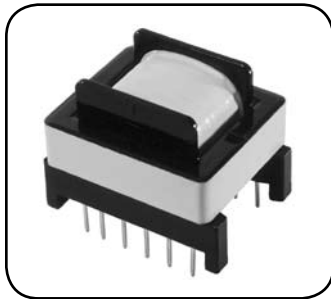


IPT Series IC Reference Design Transformers



The IPT series is a comprehensive line of SMPS transformers specifically developed to be used with off-line PWM controllers from leading IC manufacturers.

The manufacturers' reference literature is available by accessing this datasheet on-line at www.icecomponents.com.

Please contact ICE Components to request samples or to **discuss a custom version** to meet your specific requirements.

Fairchild Semiconductor

IC P/N	App Note	Power	Output	Input	ICE Part No.
KA5M0265R	AN 4101	3.36W	4.2V	85-265Vac	IPT-1001
KA5Q0765RT	AN 4102	100W	13V, 125V	85-265Vac	IPT-1002
KA5S0765	AN 4103	80W	6.3V, 11V, 15V, 75V, 170V	85-265Vac	IPT-1003
KA5S0965	AN 4103	120W	6.3V, 11V, 15V, 75V, 170V	85-265Vac	IPT-1004
KA5S1265	AN 4103	150W	6.5V, 15V, 25V, 85V, 190V	85-265Vac	IPT-1005
KA5M0365R	AN 4106	19W	3.3V, 5V, 9V, 33V	85-265Vac	IPT-1006
FS6S0965RT	AN 4108	90W	5V, 6.5V, +/-15V, 80V, 180V	85-265Vac	IPT-1007
FS6S0965RCB	AN 4108	95W	6.3V, 11V, 15V, 75V, 170V	85-265Vac	IPT-1008
FS6S0965RCB	AN 4108	120W	6.5V, 15V, 25V, 85V, 190V	85-265Vac	IPT-1009
FSDH0165	AN 4111	3.36W	4.2V	85-265Vac	IPT-1010
FS6M07652R	AN 4116	28.2W	3.3V, 5V, 12V	85-265Vac	IPT-1011
FSD210	Datasheet	3.4W	5.2V	85-265Vac	IPT-1012
FSDL0165RN	Datasheet	20W	3.4V, 5V, 17V, 23V	85-275Vac	IPT-1013
FSDM0565R	Datasheet	40W	5V, 12V	85-265Vac	IPT-1016
FSDM07652R	Datasheet	40W	5V, 12V	85-265Vac	IPT-1017
FS7M0680	Datasheet	70W	5V, 12V	85-265Vac	IPT-1018
FS7M0880	Datasheet	100W	12V	85-265Vac	IPT-1019
FS8S0765RCB	Datasheet	80W	6.5V, +/-14.5V, 50V, 80V	85-265Vac	IPT-1020

Infineon

IC P/N	App Note	Power	Output	Input	ICE Part No.
ICE2A365	DN-SMPSMultistage	40W	5V, +/-12V, 30V	90-264Vac	IPT-2002
ICE2B265	DN-SMPSSinglestage	30W	18V	85-265Vac	IPT-2003
ICE2A165	DN-Charger_Adapter10W	14W	5V	85-270Vac	IPT-2008
ICE2A0565	AN-EvalSF2_ICE2A0565Z-2	10W	5V	85-270Vac	IPT-2009
ICE2A365	AN-EvalSF2_ICE2A365-12	50W	16V	85-270Vac	IPT-2011

ON Semiconductor

IC P/N	App Note	Power	Output	Input	ICE Part No.
NCP1215	AND8128/D	5W	6.5V	90-275Vac	IPT-4024
MC44608P40	AND8034/D	20W	35V	200-260Vac	IPT-4029
MC44603	AN4001/D	110W	8V, 15V, 28V, 120V	80-140/180-280Vac	IPT-4030

IPT Series

IC Reference Design Transformers



Power Integrations

IC P/N	App Note	Power	Output	Input	ICE Part No.
LNK500	Design Idea DI-58	1.5W	5.5V	85-265Vac	IPT-5001
LNK500	Design Idea DI-59	2.5W	5.5V	85-265Vac	IPT-5002
LNK501	Design Idea DI-18	2.75W	5.5V	85-265Vac	IPT-5003
LNK501	Design Idea DI-19	1.5W	5.5V	85-265Vac	IPT-5004
LNK501	Design Idea DI-60	2.5W	5.5V	85-265Vac	IPT-5005
TNY254	Design Idea DI-27	3W	12V	85-265Vac	IPT-5006
TNY264P	Design Idea DI-28	3W	5V	85-265Vac	IPT-5008
TNY264P	Design Idea DI-61	3W	5V	85-265Vac	IPT-5009
TNY264P	Design Idea DI-62	3W	5V	85-265Vac	IPT-5010
TNY268P	Design Idea DI-33	11 W	3.3V, 5V, +/-12V	85-265Vac	IPT-5013
TOP221P	Design Idea DI-3	100mW	5.1V	85-265Vac	IPT-5014
TOP232Y	Design Idea DI-10	17W	3.3V, 5V	200-375Vdc	IPT-5015
TOP242Y	Design Idea DI-17	17W	3.3V, 5V	200-375Vdc	IPT-5017
TOP243P	Design Idea DI-23	10W	3.3V, 5V, 30V	85-265Vac	IPT-5018
TOP244P	Design Idea DI-12	16W	13.55V	85-265Vac	IPT-5019
TOP244P	Design Idea DI-39	13 W	3.3V, 5V, +/-12V	85-265Vac	IPT-5020
TOP244Y	Design Idea DI-43	30W	12V	85-265Vac	IPT-5021
TOP245P	Design Idea DI-55	20W	3.3V, 5V, 12V, -24V	85-265Vac	IPT-5022
TOP246F	Design Idea DI-67	17.6W	16-24V	108-132Vac	IPT-5023
TOP247Y	Design Idea DI-21	45W	12V	90-265Vac	IPT-5025
TOP247Y	Design Idea DI-41	43W	3.3V, 5V, 12V, 18V, 33V	90-132Vac	IPT-5026
TOP249Y	Design Idea DI-22	70W	19V	85-265Vac	IPT-5027
TOP264Y/F	Design Idea DI-66	45W	5V, 12V	90-265Vac	IPT-5030
TNY263P	Design Idea DI-77	3W	9V	85-265Vac	IPT-5031
LNK564P	Evaluation Report EPR-85	2W	6V	85-265Vac	IPT-5032
LNK362P	Design Idea DI-89	2W	6.2V	85-265Vac	IPT-5033
TNY279	Evaluation Report EPR-91	12W	12V	85-265Vac	IPT-5034
TOP245Y	Evaluation Report EPR-34	30W	12V	85-265Vac	IPT-5036
TOP258PN	Design Idea DI-142,RDR-142	35W	5V, 12V	90-265Vac	IPT-5037
TOP258MN	Design Idea DI-143	20W/80 peak	32V	90-264Vac	IPT-5038

ST Microelectronics

IC P/N	App Note	Power	Output	Input	ICE Part No.
L6590	Datasheet	15W	5V	200-375Vdc	IPT-6005
VIPer12A	AN 1347	5W	5V	85-264Vac	IPT-6017
VIPer12A	AN 1734	6W	24V	85-264Vac	IPT-6023
VIPer20	AN 1074	6W	5V	120-375Vdc	IPT-6025
VIPer20A	AN 1246	6W	12V	110-375Vdc	IPT-6026
VIPer22A	AN 1585	15W	5V, 12V	100-380Vdc	IPT-6027
VIPer22A	AN 1735	10W	5V	90-264Vac	IPT-6030
VIPer53	AN 1865	60W	6.5V, 13V, 105/115V	185-265Vac	IPT-6041
VIPer22A	AN 1897	11W	3.3V, 5V, +/-12V, -26V, 5Vst	85-265Vac	IPT-6043