

Surface Mount Frequency Mixer

JMS-2+ JMS-2

Level 7 (LO Power +7 dBm) 20 to 1000 MHz



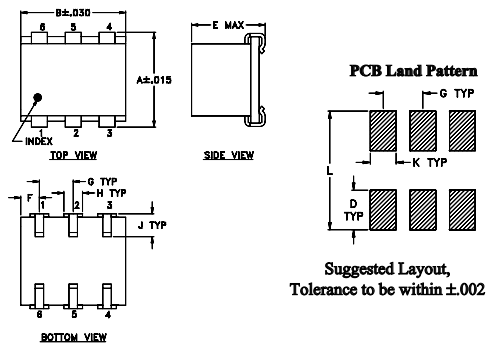
Maximum Ratings

Operating Temperature	-40°C to 85°C
Storage Temperature	-55°C to 100°C
RF Power	50mW
IF Current	40mA

Pin Connections

LO	6
RF	3
IF	2
GROUND	1,4,5

Outline Drawing

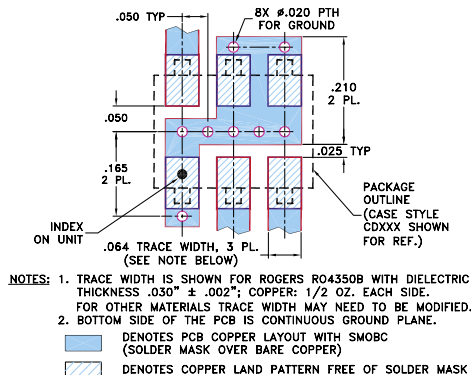


Outline Dimensions (inch / mm)

A	B	C	D	E	F	G
.280	.310	--	.100	.225	.055	.100
7.11	7.87	--	2.54	5.72	1.40	2.54

H	J	K	L	wt
.047	.065	.065	.300	grams
1.19	1.65	1.65	7.62	0.45

Demo Board MCL P/N: TB-03 Suggested PCB Layout (PL-052)



Features

- excellent L-R isolation, up to 63 dB typ.
- miniature surface mount
- J-leads for strain relief and excellent solderability

Applications

- up & down converters for receivers & transmitters
- VHF/UHF
- cellular/ISM/GSM

CASE STYLE: BH292
PRICE: \$7.45 ea. QTY (1-9)

+ RoHS compliant in accordance with EU Directive (2002/95/EC)

The +Suffix identifies RoHS Compliance. See our web site for RoHS Compliance methodologies and qualifications.

Electrical Specifications

FREQUENCY (MHz)	CONVERSION LOSS (dB)	LO-RF ISOLATION (dB)			LO-IF ISOLATION (dB)			IP3 at center band (dBm)
		L	M	U	L	M	U	
LO/RF f_L - f_U	Mid-Band m \bar{X} σ Max. Total Range Max.	Typ.	Min.	Typ.	Min.	Typ.	Min.	Typ.
20-1000	DC-1000	63	40	50	28	35	20	56
		37	20	20	20	20	20	17

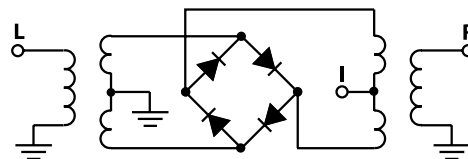
1 dB COMP.: +1 dBm typ.
Phase detection, positive polarity

L = low range [f_L to 10 f_L]
m = mid band [$2f_L$ to $f_U/2$]
M = mid range [10 f_L to $f_U/2$]
U = upper range [$f_U/2$ to f_U]

Typical Performance Data

Frequency (MHz)	Conversion Loss (dB)		Isolation L-R (dB)	Isolation L-I (dB)	VSWR RF Port (:1)	VSWR LO Port (:1)
	LO	LO +7dBm	LO +7dBm	LO +7dBm	LO +7dBm	LO +7dBm
5.00	35.00	6.93	67.42	57.23	1.35	2.44
10.00	40.00	7.00	66.49	56.87	1.25	2.37
20.00	50.00	6.97	65.94	56.78	1.22	2.52
35.15	65.15	6.92	62.92	55.59	1.22	2.57
50.00	80.00	6.86	60.51	53.87	1.23	2.54
65.30	95.30	6.89	58.52	52.15	1.23	2.49
100.00	70.00	6.84	55.07	48.85	1.22	2.44
155.76	125.76	6.72	52.10	46.19	1.22	2.43
200.00	170.00	6.70	49.75	44.71	1.23	2.36
246.21	216.21	6.75	48.10	43.71	1.23	2.37
306.52	276.52	6.96	45.81	41.99	1.25	2.40
366.82	336.82	6.97	44.49	39.66	1.27	2.39
427.12	397.12	6.99	42.09	37.81	1.30	2.44
500.00	470.00	7.03	39.89	35.06	1.36	2.58
577.88	547.88	7.29	38.51	32.59	1.44	2.74
668.33	638.33	7.63	36.87	29.46	1.56	2.95
758.79	728.79	7.68	34.71	26.72	1.72	3.17
849.24	819.24	7.98	33.07	23.71	1.95	3.58
909.54	879.54	8.51	32.47	22.35	2.13	3.70
1000.00	970.00	8.90	32.02	20.21	2.45	3.80

Electrical Schematic



Mini-Circuits
ISO 9001 ISO 14001 CERTIFIED

ALL NEW
minicircuits.com

P.O. Box 350166, Brooklyn, New York 11235-0003 (718) 934-4500 Fax (718) 332-4661 For detailed performance specs & shopping online see Mini-Circuits web site



The Design Engineers Search Engine Provides ACTUAL Data Instantly From MINI-CIRCUITS At: www.minicircuits.com

RF/IF MICROWAVE COMPONENTS

REV. B
M102713
JMS-2
ED-3369/2
DJ/CP/AM
061228
Page 1 of 2

Performance Charts

