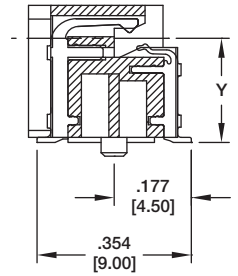
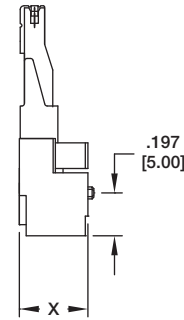
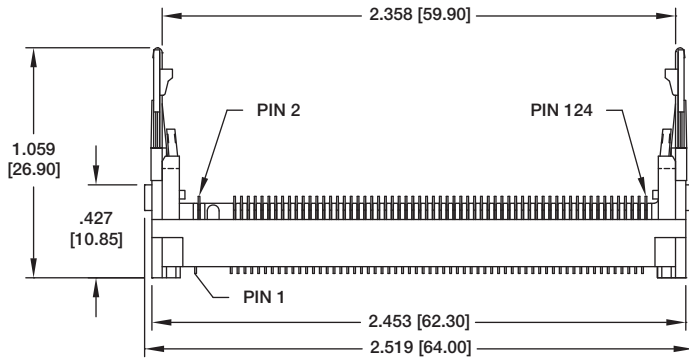
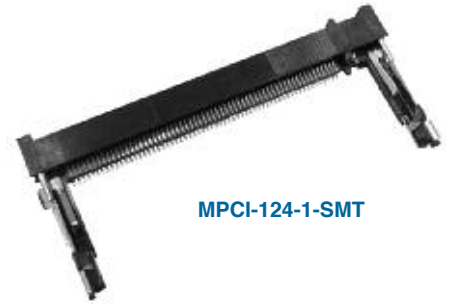
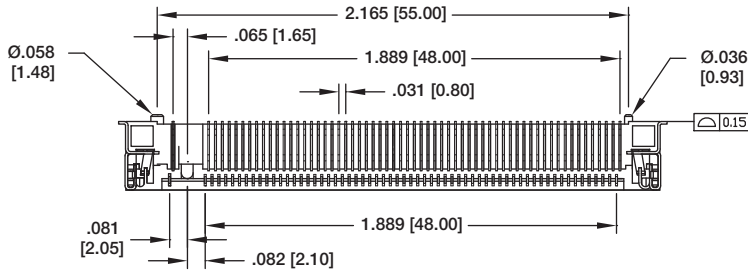


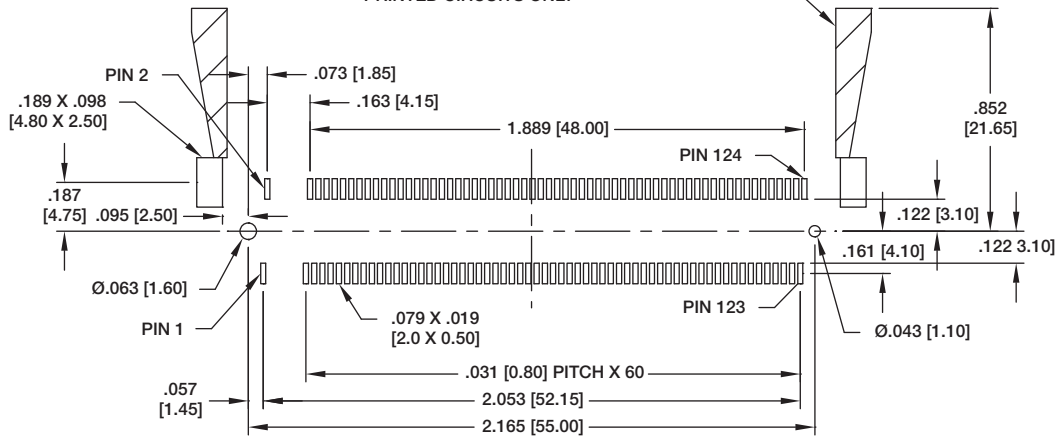
MINI PCI
SURFACE MOUNT



STANDOFF HEIGHT

(SEE CHART)

LEVER MOVEMENT AREA
DO NOT MOUNT COMPONENTS IN THIS AREA
PRINTED CIRCUITS ONLY



Recommended PCB Layout

PART NO	DIMENSIONS	
	X	Y
MPCI-124-1-SMT	.315 [8.00]	.239 [6.08]
MPCI-124-2-SMT	.362 [9.20]	.287 [7.30]
MPCI-124-3-SMT	.610 [15.50]	.545 [13.85]