

SHA395A thru SHA395C

12 AMP

HYPER FAST

CENTERTAP RECTIFIER

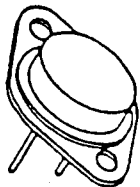
100 - 200 VOLTS

SSDI
X 60037

14849 FIRESTONE BLVD.
LA MIRADA, CA 90638
TEL: (213) 921-9660
FAX: (714) 522-7424

CASE STYLE P

JEDEC TO-66



FEATURES

- ▶ COMBINED PERFORMANCE OF TWO AXIAL DISCRETES
- ▶ PIV TO 200 VOLTS
- ▶ HYPER FAST RECOVERY, 25ns MAX
- ▶ HERMETICALLY SEALED
- ▶ VERY LOW FORWARD VOLTAGE DROP
- ▶ SUPERIOR THERMAL RESISTANCE
- ▶ GOLD EUTECTIC DIE ATTACH, ALUMINUM
- ▶ ULTRASONIC WIRE BOND, NO SOLDER USED

MAXIMUM RATINGS

RATING	SYMBOL	VALUE	UNIT
Peak Repetitive Reverse Voltage Per Leg and DC Blocking Voltage Per Leg SHA395A SHA395B SHA395C	VRM(rep) VR	100 150 200	Volts
RMS Reverse Voltage Per Leg SHA395A SHA395B SHA395C	Vr	70 105 140	Volts
Half Wave Rectified Forward Current Averaged Over Full Cycle (Resistive Load, 60Hz, Sine Wave, TC=55°C)	IO	12	Amps
Peak Repetitive Forward Current (TC=55°C, 8.3ms Pulse, Allow Junction to Reach Equilibrium Between Pulses)	IFM(rep)	50	Amps
Peak Surge Current (TC=55°C, 8.3ms Pulse, Superimposed on Rated Current at Rated Voltage)	IFM(surge)	100	Amps
Operating and Storage Temperature	TJ, Tstg	-65 to +200	°C

THERMAL CHARACTERISTICS

CHARACTERISTIC	SYMBOL	VALUE	UNIT
Thermal Resistance, Junction to Case Both legs tied together	RθJC	3.0	°C/W

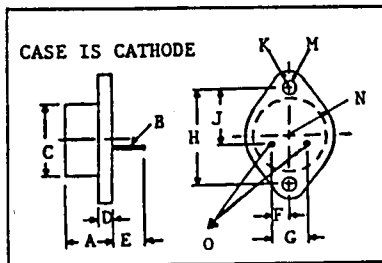
ELECTRICAL CHARACTERISTICS

CHARACTERISTIC	SYMBOL	VALUE	UNITS
Max Full Cycle Forward Voltage Drop, Averaged Over Full Cycle Per Leg (IO(MAX), 60Hz, Square Wave, TC=55°C)	VF(AV)	0.45	Vdc
Max Instantaneous Forward Voltage Drop Per Leg (IF= 15 Adc, TC = 25°C, 300 μs Pulse)	VF	0.9	Vdc
Max Full Cycle Reverse Leakage Current Averaged Over Full Cycle Per Leg (Rated VR, 60Hz, Square Wave, TC= 100°C)	IR(AV)	50	μAdc
Max Reverse Leakage Current Per Leg (Rated VR, TC=25°C)	IR	5	μAdc
Max Junction Capacitance Per Leg (VR = 10V, TC=25°C)	CJ	150	pf

REVERSE RECOVERY CHARACTERISTICS

CHARACTERISTIC	SYMBOL	MIN	TYP	MAX	UNIT
Reverse Recovery Time Per Leg (IF=500mA, IR=1A, IRR=250mA)	trr	--	20	25	ns

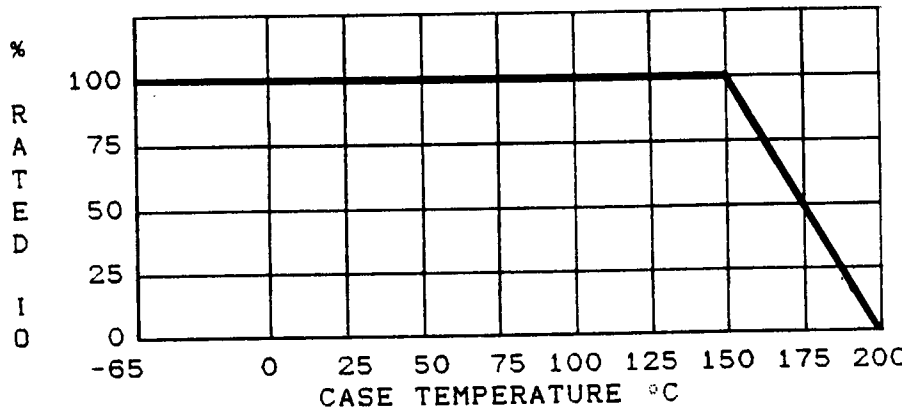
PHYSICAL DIMENSIONS



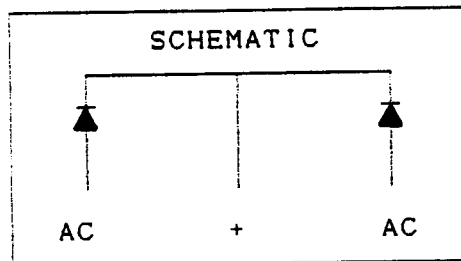
KEY TO DIMENSIONS: (Inches)

- A = .250 - .340
- B = .028 - .034
- C = .470 - .500
- D = .050 - .075
- E = .360 Min.
- F = .093 - .107
- G = .190 - .210
- H = .958 - .962
- J = .570 - .590
- K = .145 Max.
- M = .142 - .152
- N = .350 Max.
- O = Anode

TYPICAL OPERATING CURVES



SCHEMATIC



SSDI

SOLID STATE DEVICES, INC.

14849 FIRESTONE BOULEVARD ♦ LA MIRADA, CA 90638
 TELEPHONE: (213) 921 9660 ♦ FAX: (714) 522-7424

SHA395A - SHA395C