

GT Series Ceramic Disc Thermostats

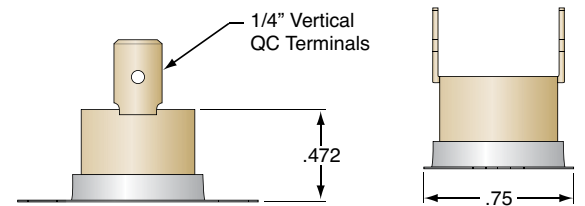
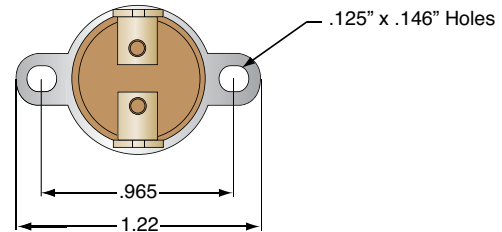
Thermtrol offers the GT line of 1/2" disc fixed temperature thermostats. Approved by numerous testing agencies, all GT thermostats pass a series of rigorous quality control checks including continuity, function, contact resistance and dielectric strength. Excellent multipurpose thermostat available in both automatic reset and push button manual reset configurations. A wide range of operating temperatures, as well as a small size and a variety of physical configurations, permit the flexibility to meet your specific needs.

FEATURES

- Bi-metal disc, factory pre-set
- Switch Actions:
 - Automatic reset: Available with both normally open and normally closed switch logic
 - Manual reset: Mechanically resettable device
- Variety of accessories and mounting options
- Compact dimensions, high load capacity
- High operating speed
- Current insensitive

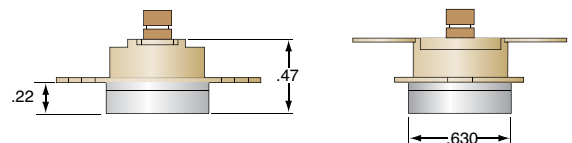
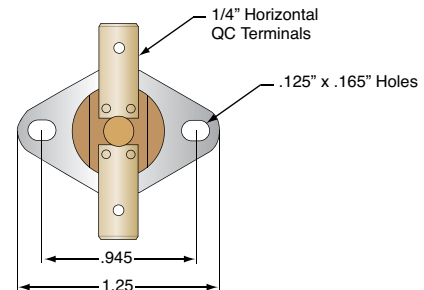
APPLICATIONS

- Vending machines
- Microwave ovens
- Electric space heaters
- Overhead projectors
- Hair care appliances
- Clothes dryers
- Audio speakers
- Copiers
- Refrigeration compressors
- Food processing equipment
- Toasters
- Coffee makers
- Vacuum cleaners
- Medical equipment
- Dishwashers
- Gas furnace protection
- Power supplies
- Communications equipment
- Welding equipment



Auto Reset Construction

Options shown: Vertical 1/4" Q.C. Terminals and an 8-32 Stud Mount Cap



Manual Reset Construction

Options shown: Horizontal 1/4" Q.C. Terminals and Airstream Mount Flange

All dimensions mm (in.)

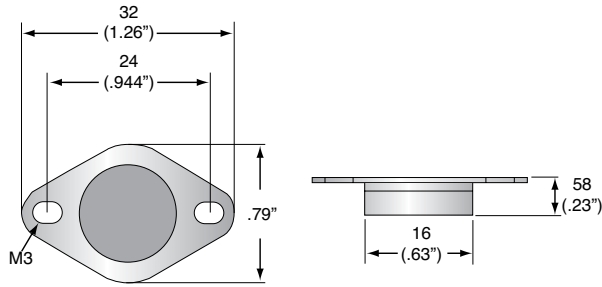
www.thermtrol.com
E-mail: sales@thermtrol.com

8914 Pleasantwood Ave., NW • P.O. Box 2501 • North Canton, OH 44720 • (330) 497-4148 • Fax (330) 497-4189
IN ASIA: Thermtrol Asia, Ltd. • Hong Kong • China • (852) 2873-3788 • Fax (852) 2873-3718 • chinasales@thermtrol.com

Mounting Options

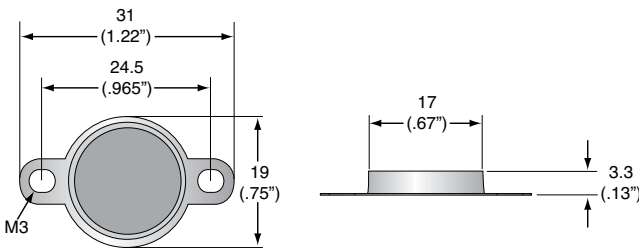
Airstream Mount Flange Cup

Code: AM • Material: Aluminum



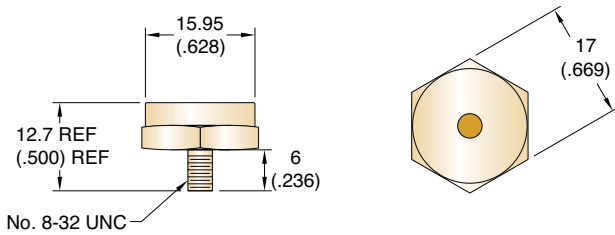
Loose Ear Surface Mount Flange

Code: SM • Material Aluminum



8-32 Stud Mount Cap

Code: ST • Material Brass

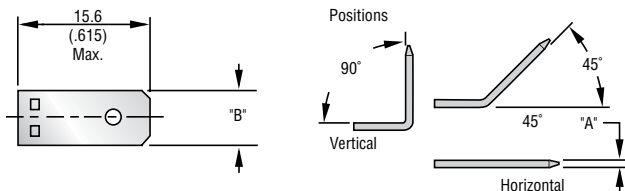


Terminal Options

Quick Connects

Material: Brass, Tin Plated

	1/4"	3/16"
Thickness (A):	0.8 (.031)	0.5 (.020)
Width (B):	6.3 (.250)	4.8 (.187)
Orientation	Codes	
Vertical	4V	3V
Horizontal	4H	3H
45°	4A	3A



All dimensions mm (in.)

Electrical Ratings and Selected Agency Approvals

Model Type	Cycles (X 1000)	Electrical Rating	Max. Temp. (°C)	Agency
GT52N	100	120 Vac/15 Amps 240 Vac/10 Amps	230°C	UL/CSA/VDE
GT52N	30	120 Vac/15 Amps 240 Vac/10 Amps	260°C	UL ONLY
GT52X	30	120 Vac/0.5 Amps	230°C	UL/CSA/VDE
GT52P	100	42Vdc/0.2 Amps	230°C	UL/CSA/VDE
GT15N	6	120 Vac/15 Amps 240 Vac/10 Amps	250°C	UL ONLY

Agency File Numbers

GT52	E43273	067165/6	100896
GT15	E201152		

Standard Tolerances: Manual Reset

Set Temperature		Open Tolerance	
°C	°F	°C	°F
150-250	302-482	+/-8.0	+/-14.4

Standard Temperature Differential and Tolerances: Automatic Reset

Set Temperature		Differential		Open Tolerance		Close Tolerance	
°C	°F	°C	°F	°C	°F	°C	°F
150-260	301-446	25	45	+/-5.0	+/-9.0	+/-7.0	+/-13.0

Numbering System (for requesting samples only)

GT	52	N	L	4V	SM	165
----	----	---	---	----	----	-----

Contact Type

52	Automatic Reset
15	Manual Reset

Contact Material

N	Silver Nickel Alloy
P	Gold Platinum Silver
X	Gold Platinum Silver

Contact Configuration

L	Normally Closed, Open on Rise
F	Normally Open, Close on Rise

Terminal Options

3/16" Quick Connects	
3V	Vertical
3H	Horizontal
3A	45°
1/4" Quick Connects	
4V	Vertical
4H	Horizontal
4A	45°

Other terminal types available.

Mounting Options

FC	No Mounting Provision, Flat Cup
AM	Airstream Mount Integral Flange
SM	Surface Mount Flange, Loose Ear
ST	8-32 Stud Mount

Other mounting types available.

Set temperature - select in increments of 1°C from 150°C to 260°C

Higher set points available, contact Thermtrol for details.