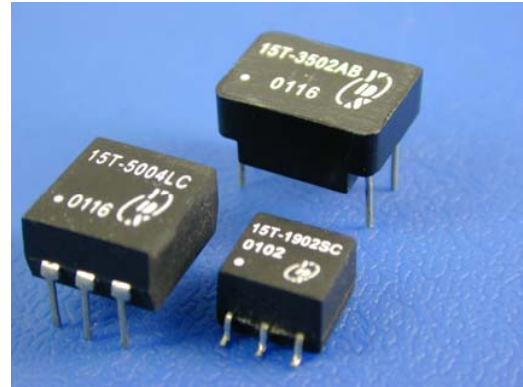



**FEATURES**

- Return loss meets requirements
- Fast rise time compatible with standards
- Through hole and surface mount packages available
- Recognized By UL 60950-1
- Models with 1500Vrms isolation and 3000Vrms reinforced insulation per BAPT EN41003/EN60950

**TEST CONDITIONS**

- Inductance ----- 100KHZ/100mV
- Leakage Inductance ----- 100KHZ/100mV
- Interwinding Capacitance-- 100KHZ/100mV


**ELECTRICAL SPECIFICATIONS @25°C**

Part Number	Turns Ratio (±2%)	OCL. Primary (uH MIN.)	OCL AT -40°C (uH MIN)	LL (uH MAX)	CW/W (pF MAX)	Isolation Voltage (Vrms MIN)	Package Schematic	Primary Pins
15T-3502TB	1:2CT	35	20	0.12	10	1500	T/B SMT	2-6
15T-4501TA	1:1	45	30	0.12	13	1500	T/A SMT	2-6
15T-4001QA	1:1	40	30	0.12	13	1500	Q/A THT	2-6
15T-3502QB	1:2CT	35	20	0.12	10	1500	Q/B THT	2-6
15T-1513QB	1:4CT	150	-	0.30	15	1500	Q/B THT	2-6
15T-5004LC	1:1.73CT	50	-	0.10	12	1500	L/C THT	4-6
15T-4001LE	1:1	40	-	0.10	10	1500	L/E THT	4-6
15T-4001SE	1:1	40	-	0.10	10	1500	S/E SMT	4-6
15T-1902SC	1:2CT	19	-	0.06	10	1500	S/C SMT	4-6
15T-1902LC	1:2CT	19	-	0.06	10	1500	L/C THT	4-6
15T-4001HA	1:1	40	-	0.10	5	3000	H/A THT	1-5
15T-1902HD	1:2CT	19	-	0.06	10	3000	H/D THT	1-5

**ELECTRICAL SPECIFICATIONS @25°C—Operating Temperature -40°C to +85°C**

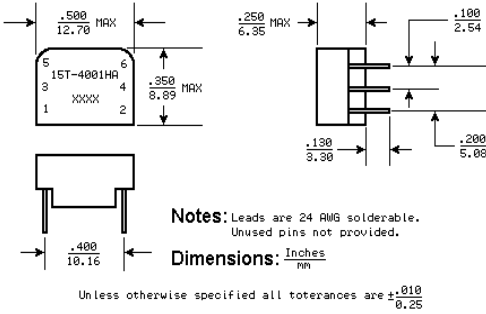
Part Number	Turns Ratio (±2%)	OCL. Primary (uH MIN.)	OCL AT -40°C (uH MIN)	LL (uH MAX)	CW/W (pF MAX)	Isolation Voltage (Vrms MIN)	Package Schematic	Primary Pins
15T-1011XE	1:1	100	40	0.110	10	1500	X/E SMT	1-3
15T-4002XC	1:2CT	40	19	0.110	12	1500	X/C SMT	4-6
15T-1011SE	1:1	100	40	0.110	10	1500	S/E SMT	4-6
15T-4002SC	1:2CT	40	19	0.110	12	1500	S/C SMT	4-6
15T-4003XF	1CT:1CT	40	19	0.100	10	1500	X/F SMT	1-5
15T-4004XC	1:1.155CT	40	20	0.150	12	1500	X/C SMT	4-6

**ELECTRICAL SPECIFICATIONS @25°C**

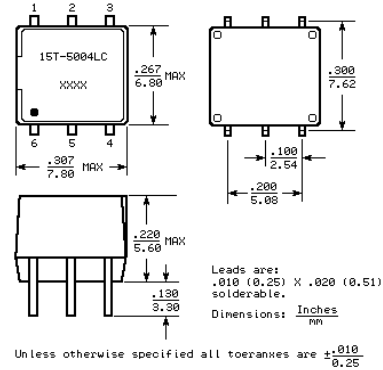
Part Number	Turns Ratio (±5%)	OCL Primary (mH MIN.)	CW/W PF MAX	LL uH MAX	DCR Pri (Ω MAX)	DCR Sec (Ω MAX)	Isolation Voltage (Vrms MIN)	Package Schematic	Primary Pins
15T-1221HC	1:1	1.20	25	0.50	0.70	0.70	1500	H/C THT	1-2

**Mechanicals**

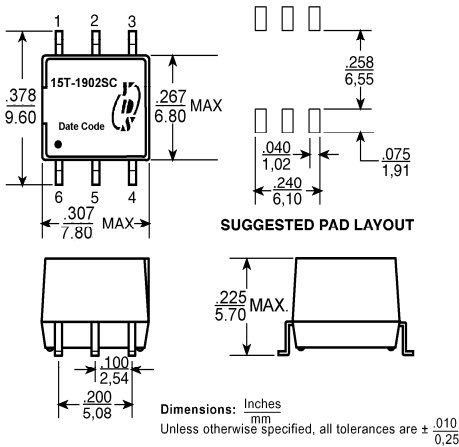
**H**



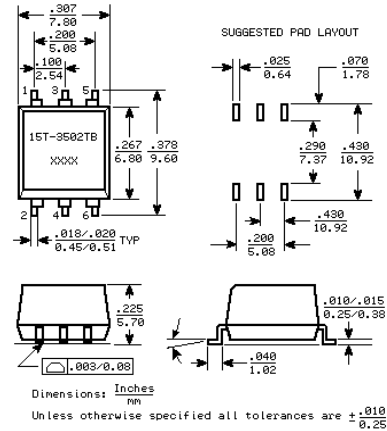
**L**



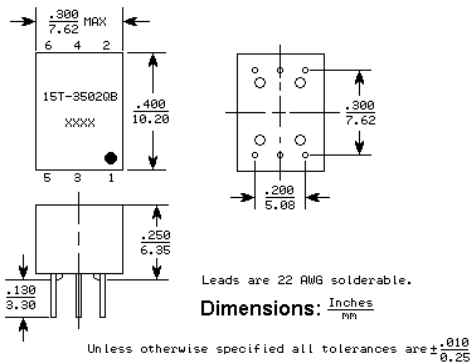
**S**



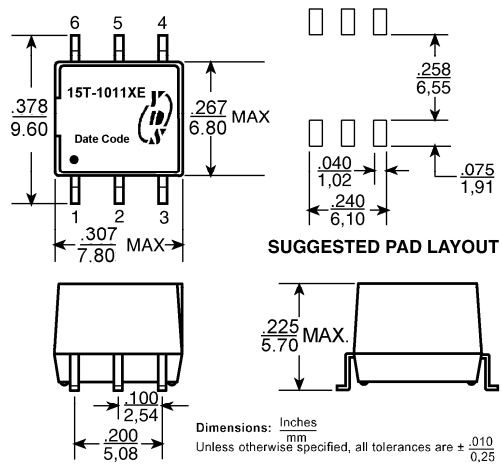
**T**



**Q**



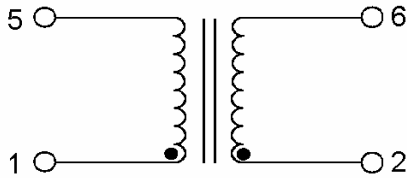
**X**



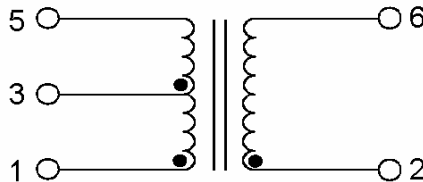


**Schematics**

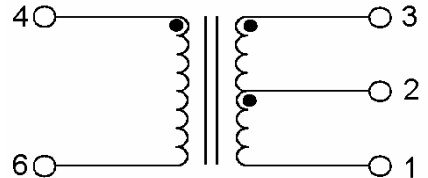
**A**



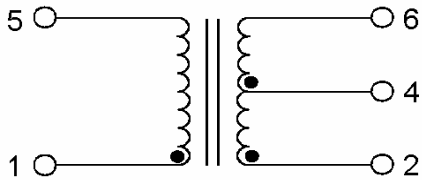
**B**



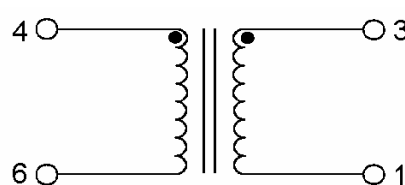
**C**



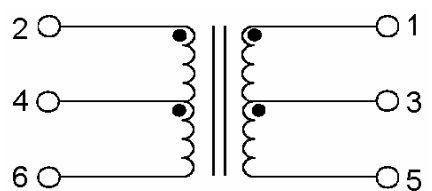
**D**



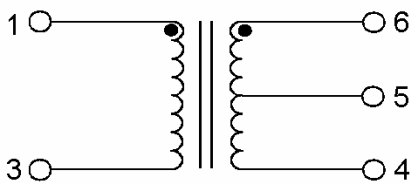
**E**



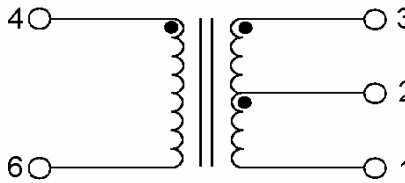
**F**



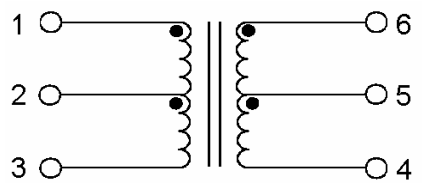
**K**



**L**



**M**



**Part Number:** 15T - 350 2 T B NL

A B C D E F

A:Series  
 B:Inductance  
 C:Sequence id  
 D:Appearance  
 E:Schematic  
 F:RoHS Version