



CMDS SERIES

Power Modules

Features

- High Thermal Efficiency
- Complete Power Control Circuits in a Single Package

DESCRIPTION

These modules provide complete power control in a single package, utilizing high thermal efficiency to assure long life and reliable performance. Two standard models provide 2500 Vrms isolation from all terminals to ceramic base and are UL recognition pending.

PART NUMBER IDENTIFICATION

EX.: CMDS50/12F

Series Type	Current	Voltage	Free Wheeling Diode
CMDS-Case style	25 - 25 Amps 50 - 50 Amps	06 - 600 08 - 800 10 - 1000 12 - 1200	F

ELECTRICAL SPECIFICATION

25

50

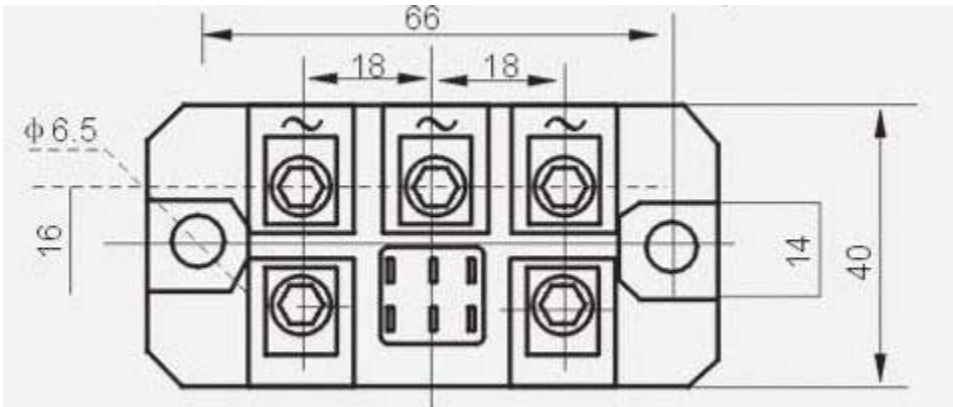
SYMBOL	SPECIFICATION	RATINGS	
I_D	Maximum DC Output Current ($T_c = 85^\circ\text{C}$)	25 Amps	50 Amps
V_F	Maximum Voltage Drop @ Amps Peak	1.65V @ $I_F=25\text{A}$	1.70V @ $I_F=50\text{A}$
T_J	Operating Junction Temperature Range	-40°C to +125°C	
di/dt	Critical Rate of Rise of On-State Current @ $T_J=125^\circ\text{C}$	100A/ μs	100A/ μs
dv/dt	Critical Rate of Rise of Off-State Voltage [$V/\mu\text{s}$]	500V/ μs	500V/ μs
V_{RRM}	Repetitive Peak Reverse Voltage (AC Line)	400 (120 Vac) 600 (240 Vac) 1000 (380 Vac) 1200 (480 Vac)	
I_{TSM}	Maximum Non-Repetitive Surge Current ($1/2$ Cycle, 60Hz)	250A	600A
I^2T	Maximum I^2T for Fusing ($t=8.3\text{ms}$) [A^2sec]	260	1500
R_{qJC}	Maximum Thermal Resistance Junction to Ceramic Base per Chip	0.9°K/W	0.7°K/W
V_{ISOL}	Isolation Voltage	2500 V_{RMS}	2500 V_{RMS}

MECHANICAL SPECIFICATIONS

Weight: (typical)

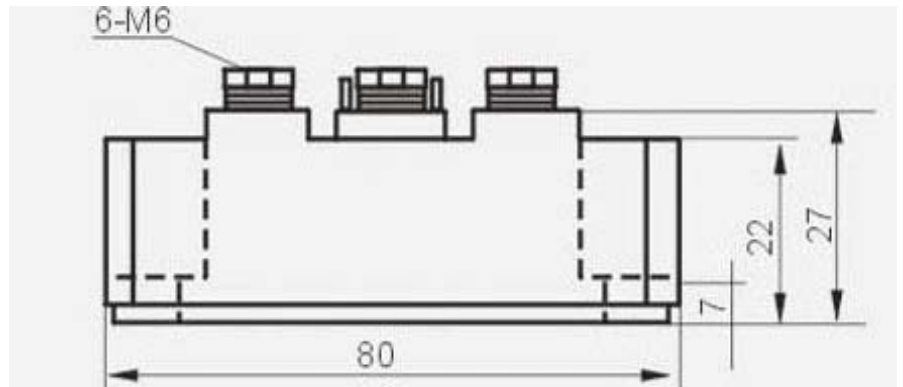
5.1 oz. (145g)

MECHANICAL DIMENSIONS AND CIRCUIT DIAGRAM

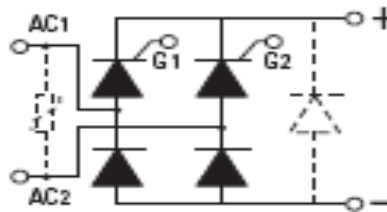


Package Dimensions SIDE
25 and 50 Amp Models

Package Dimensions TOP
25-50 Amp Models



SERIES CMD CIRCUIT



©C3 Semiconductors, LLC. All rights are reserved

For recommended applications and more information contact:
 USA: Sales Support (888) 882-8689
 C3 Semiconductors, LLC. 2320 Paseo de las Americas, Ste. 104, San Diego, CA 92154
 Email: sales@c3semi.com WEB SITE: <http://www.C3semi.com>