

EMC Filters for AC Power Line

For Single-phase, Mid-size Box Cased ZHC-11 Series

Conformity to RoHS Directive

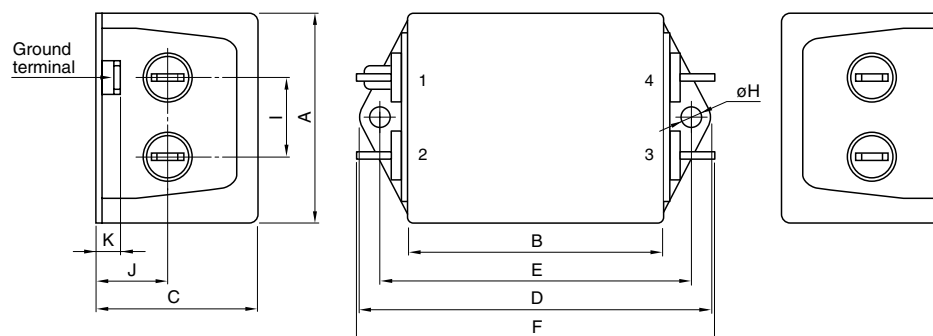
FEATURES

- The ZHC-11 series EMC filters exhibit outstanding attenuation characteristics with respect to both differential mode and common mode noise components in the MF and HF bands.
- The withstand voltage between line and ground is AC.2500V.
- Leakage current is maintained at less than 1mA.
- These filters are highly reliable and provide stable attenuation performance even in harsh environments, where the filters may be subjected to humidity, vibration, and shock.
- Efficient manufacturing makes these filters highly cost-effective.
- Connection terminals employing Faston® #250 facilitate implementation and maintenance.
- It is a product conforming to RoHS directive.

APPLICATIONS

Computers and peripheral terminals, general control devices, office automation equipment, and other industrial devices.

SHAPES AND DIMENSIONS



Dimensions in mm

Part No.	A	B	C	D	E	F	øH	I	J	K
ZHC2203-11	45.5	49	29.5	70	60.4	75	4.8	16	14	6.4
ZHC2206-11	50.8	62	40	85	75	87	4.8	18	18.5	6.4
ZHC2210-11	50.8	62	40	85	75	87	4.8	18	18.5	6.4

- Case: metal, terminal: Faston® #250 (t=0.8mm)

SAFETY STANDARDS

Part No.	Standard and standard No.		
	U.S.A.	Canada	Europe
	UL	CSA	NEMKO
	UL1283	CSA C22.2 No.8	EN60939
ZHC2203-11	E62388	LR76849C	P08209035
ZHC2206-11	E62388	LR76849C	P08209035
ZHC2210-11	E62388	LR76849C	P08209035



- Faston® is a registered trademark of Tyco Electronics AMP Corp. Incorporated.

- Conformity to RoHS Directive: This means that, in conformity with EU Directive 2002/95/EC, lead, cadmium, mercury, hexavalent chromium, and specific bromine-based flame retardants, PBB and PBDE, have not been used, except for exempted applications.

- All specifications are subject to change without notice.

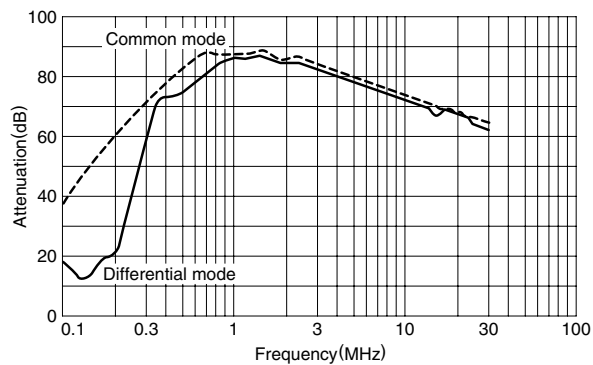
ELECTRICAL CHARACTERISTICS

Part No.	ZHC2203-11	ZHC2206-11	ZHC2210-11
Rated voltage Eac(V)	250	250	250
Rated current(A)	3	6	10
Test voltage Eac(V)[Between terminal and case]	2500	2500	2500
Insulation resistance(M Ω)	100min.	100min.	100min.
[DC, 500V, 1min/between terminal and case]			
Leakage current(mA)[250V • 60Hz]	1max.	1max.	1max.
DC resistance(m Ω)	200max.	300max.	100max.
Operating temperature range(°C)[Including self-temperature rise]	-25 to +85	-25 to +85	-25 to +85
With derating over(°C)	55	55	55
Temperature rise(°C)	30max.	30max.	30max.
Attenuation frequency range (MHz)[+5 to +35°C]	Differential mode at 40dB 0.3 to 30	0.3 to 30	0.3 to 30
	Common mode at 40dB 0.2 to 30	0.2 to 30	0.2 to 30
Weight(g)	130	250	270

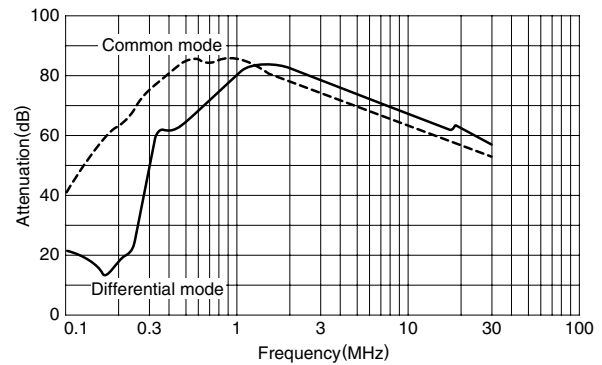
TYPICAL ELECTRICAL CHARACTERISTICS

ATTENUATION vs. FREQUENCY CHARACTERISTICS

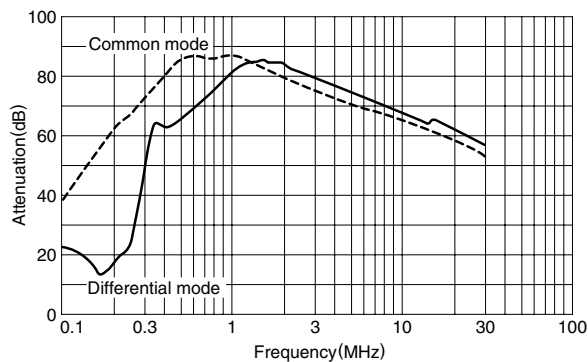
ZHC2203-11



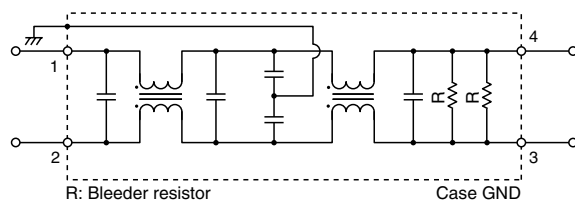
ZHC2206-11



ZHC2210-11



CIRCUIT DIAGRAM



• All specifications are subject to change without notice.