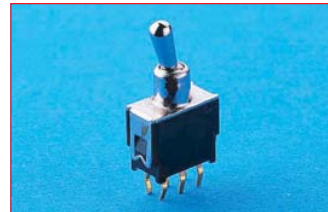


FEATURE

- 1. Metal Bushing
- 2. Sealed construction available
- 3. DPDT / 2.54 mm pitch



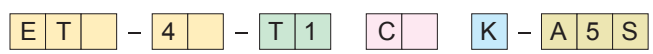
SPECIFICATIONS

CONTACT RATING: max 0.4 VA max @ 48 V AC or DC
 Min . 1 A /20 mV AC or DC
 ELECTRICAL LIFE:50,000 make-and-break cycles at full load
 CONTACT RESISTANCE: 50 mΩmax. initial @2-4 VDC,100 mA
 INSULATION RESISTANCE: 500 MΩmin.
 DIELECTRIC STRENGTH: 500 V RMS @ sea level.
 DEGREE OF PROTECTION : IP67
 OPERATING TEMPERATURE: -30°C to 85°C

MATERIALS

Actuator - Brass , chrome plated,internal o-ring seal are available
 Bushing and Housing - Stainless Steel
 CASE - glass filled nylon 4/6,flame retardant heat stabilized (UL94V-0)
 CONTACT -- phosphor bronze gold-plated over nickel plated
 TERMINAL - phosphor bronze tin-lead plated over nickel plated
 TERMINAL SEAL - Epoxy

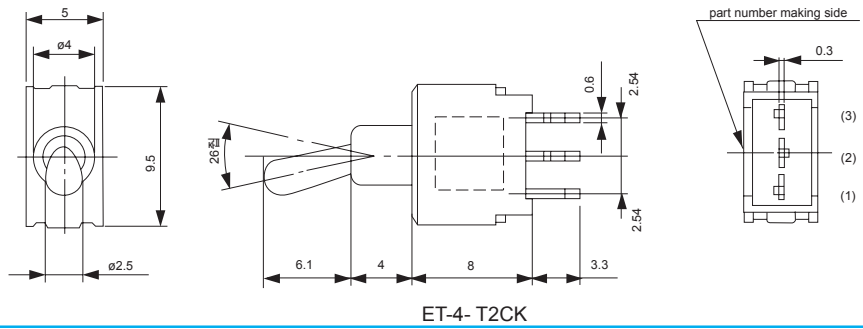
How do you modify the switches you need!!



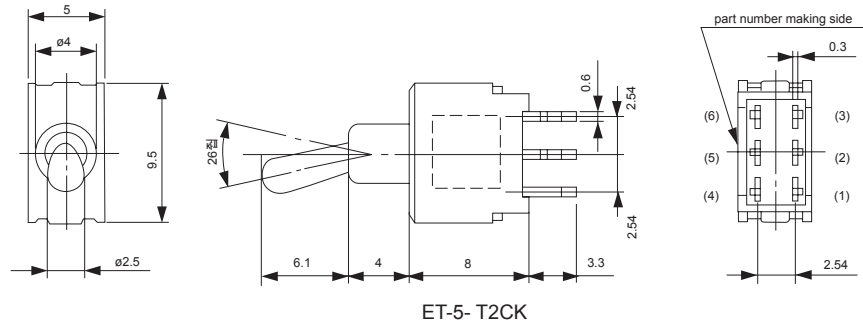
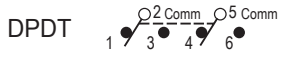
Switches Function			Actuator		Termination		Contact Material		Vertical support Bracket	
washable	Non-washable		T1		C	P.C	K (std) gold / tin-lead		(none)	
ET-4	ETN-4	SP on-none-on	T2	10.16	H	horison			A5S	Vertical bracket
ET-4B	ETN-4B	SP on-none-(on)	T3	6.10	V	vertical				
ET-4A	ETN-4A	SP on-off-on	T4	8.13						
ET-4H	ETN-4H	SP (on)-off-(on)	T5	13.97						
ET-4I	ETN-4I	SP on-off-(on)		3.50						
ET-5	ETN-5	DP on-none-on								
ET-5B	ETN-5B	DP on-none-(on)								
ET-5A	ETN-5A	DP on-off-on								
ET-5H	ETN-5H	DP (on)-off-(on)								
ET-5I	ETN-5I	DP on-off-(on)								

* now the ET-(X)A are available . the other option are available soon . Please inquiry our office first.

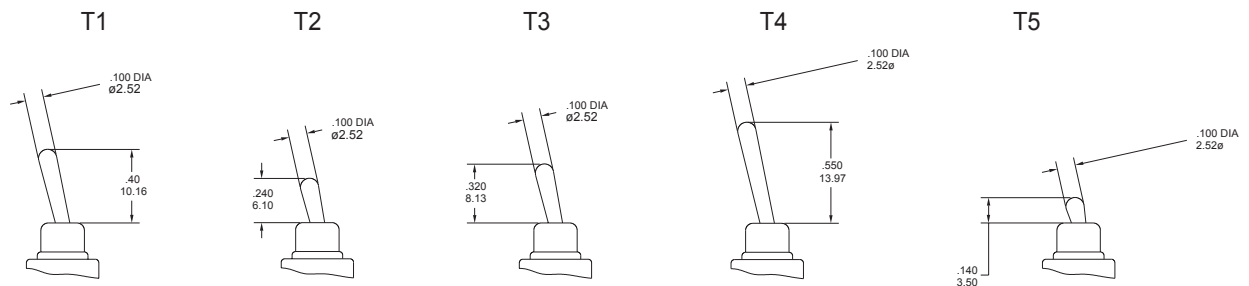
Model No.	Switching position		
ET-4	ON	none	ON
ET-4A	ON	OFF	ON
ET-4B	ON	None	(ON)
ET-4H	(ON)	OFF	(ON)
ET-4I	ON	OFF	(ON)
Term. Comm.	2-3	open	2-1



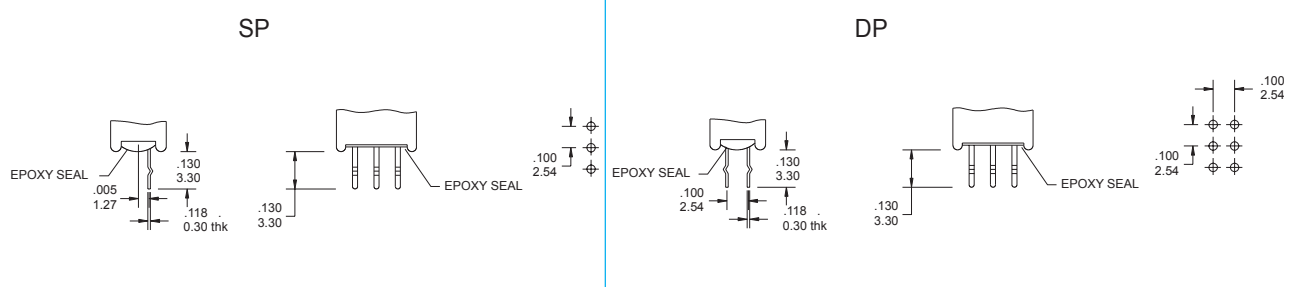
Model No.	Switching position		
ET-5	ON	none	ON
ET-5A	ON	OFF	(ON)
ET-5B	ON	None	ON
ET-5H	(ON)	OFF	(ON)
ET-5I	ON	OFF	(ON)
Term. Comm.	2-3,5-6	open	2-1,5-4



Actuator Option

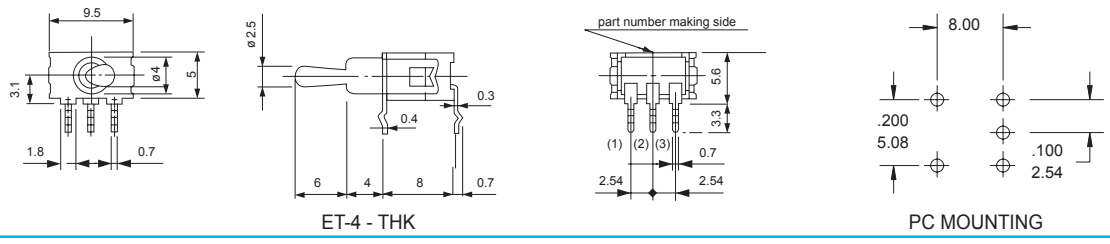


Terminal Option



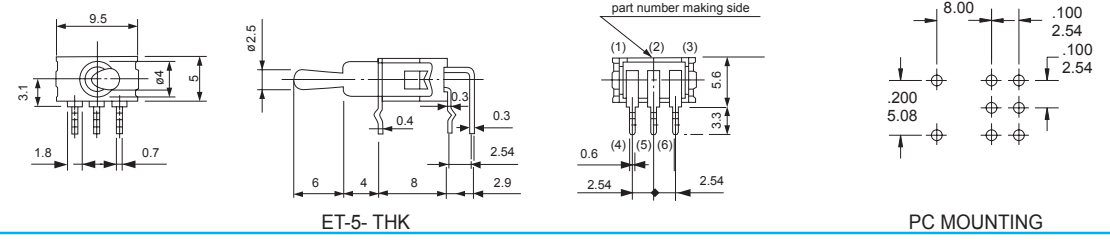
H
horizon
right
angle
type

SPDT



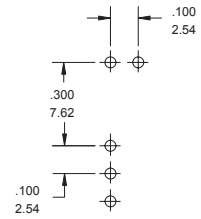
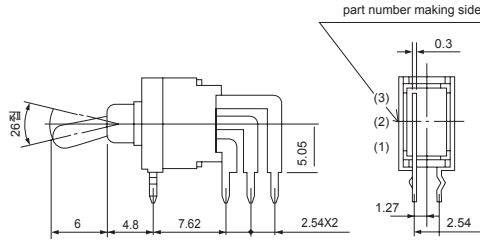
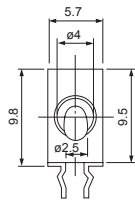
H
horizon
right
angle
type

DPDT



V
Vertical right
angle type

SPDT

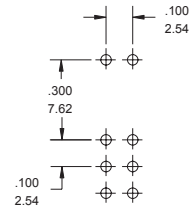
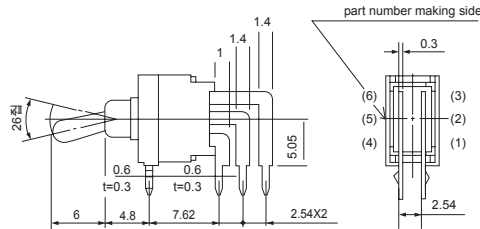
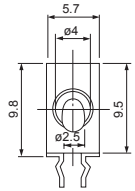


ET-4 - TVK

PC MOUNTING

V
Vertical right
angle type

DPDT



ET-5- TVK

PC MOUNTING

CONTACT MATERIAL OPTIONS

CODE	CONTACT MATERIAL	TERMINAL MATERIAL	RATING
K	Brass , gold plated	Copper alloy, tin-lead plated	0.4VA max @48 VAC or VDC