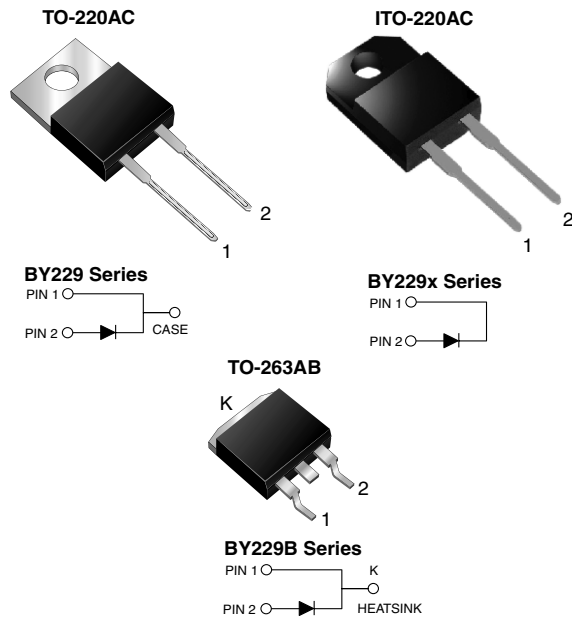


Fast Switching Plastic Rectifier



FEATURES

- Glass passivated chip junction
- Superfast recovery time for high efficiency
- Low leakage current
- High forward surge capability
- Meets MSL level 1, per J-STD-020C, LF maximum peak of 245 °C (for TO-263AB package)
- Solder dip 260 °C, 40 s (for TO-220AC and ITO-220AC package)
- Component in accordance to RoHS 2002/95/EC and WEEE 2002/96/EC



TYPICAL APPLICATIONS

For use in fast switching rectification of power supply, inverters, converters and freewheeling diodes application.

MECHANICAL DATA

Case: TO-220AC, ITO-220AC, TO-263AB

Epoxy meets UL 94V-0 flammability rating

Terminals: Matte tin plated leads, solderable per J-STD-002B and JESD22-B102D

E3 suffix for commercial grade, meets JESD 201 class 1A whisker test, HE3 suffix for high reliability grade (AEC Q101 qualified), meets JESD 201 class 2 whisker test

Polarity: As marked

Mounting Torque: 10 in-lbs maximum

PRIMARY CHARACTERISTICS	
$I_{F(AV)}$	8.0 A
V_{RRM}	200 V to 800 V
I_{FSM}	100 A
t_{tr}	145 ns
V_F	1.85 V
$T_J \text{ max.}$	150 °C

MAXIMUM RATINGS ($T_C = 25\text{ °C}$ unless otherwise noted)						
PARAMETER	SYMBOL	BY229-200	BY229-400	BY229-600	BY229-800	UNIT
Maximum recurrent peak reverse voltage	V_{RRM}	200	400	600	800	V
Maximum RMS voltage	V_{RMS}	140	280	420	560	V
Maximum DC blocking voltage	V_{DC}	200	400	600	800	V
Maximum average forward rectified current at $T_C = 100\text{ °C}$	$I_{F(AV)}$	8.0				A
Peak forward surge current 8.3 ms single half sine-wave superimposed on rated load	I_{FSM}	100				A
Maximum slope of reverse recovery current $I_F = 2.0\text{ A}$, $V_R = 30\text{ V}$, $di/dt = 20\text{ }\mu\text{s}$	di/dt	60				A/ μs
Operating junction and storage temperature range	T_J, T_{STG}	- 40 to + 150				°C
Isolation voltage (ITO-220AC only) from terminal to heatsink $t = 1\text{ min}$	V_{AC}	1500				V

BY229(X,B)-200 thru BY229(X,B)-800

Vishay General Semiconductor



ELECTRICAL CHARACTERISTICS (T _C = 25 °C unless otherwise noted)								
PARAMETER	TEST CONDITIONS		SYMBOL	BY229-200	BY229-400	BY229-600	BY229-800	UNIT
Maximum instantaneous forward voltage ⁽¹⁾	20 A		V _F			1.85		V
Maximum DC reverse current at rated DC blocking voltage		T _J = 25 °C T _J = 125 °C	I _R			10 300		μA
Maximum reverse recovery time	I _F = 1.0 A, V _R = 30 V, dI/dt = 50 A/μs, I _{rr} = 10 % I _{RM}		t _{rr}			145		ns
Maximum recovered stored charge	I _F = 2.0 A, V _R = 30 V, dI/dt = 20 A/μs		Q _{rr}			700		nC

Note:

(1) Pulse test: 300 μs pulse width, 1 % duty cycle

THERMAL CHARACTERISTICS (T _C = 25 °C unless otherwise noted)					
PARAMETER	SYMBOL	BY229	BY229X	BY229B	UNIT
Typical thermal resistance from junction to case	R _{θJC}	2.0	4.8	2.0	°C/W
Typical thermal resistance from junction to air	R _{θJA}	20	-	20	°C/W

ORDERING INFORMATION (Example)					
PACKAGE	PREFERRED P/N	UNIT WEIGHT (g)	PACKAGE CODE	BASE QUANTITY	DELIVERY MODE
TO-220AC	BY229-200-E3/45	1.80	45	50/tube	Tube
ITO-220AC	BY229X-200-E3/45	1.95	45	50/tube	Tube
TO-263AB	BY229B-200-E3/45	1.77	45	50/tube	Tube
TO-263AB	BY229B-200-E3/81	1.77	81	800/reel	Tape reel
TO-220AC	BY229-200HE3/45 ⁽¹⁾	1.80	45	50/tube	Tube
ITO-220AC	BY229X-200HE3/45 ⁽¹⁾	1.95	45	50/tube	Tube
TO-263AB	BY229B-200HE3/45 ⁽¹⁾	1.77	45	50/tube	Tube
TO-263AB	BY229B-200HE3/81 ⁽¹⁾	1.77	81	800/reel	Tape reel

Note:

(1) Automotive grade AEC Q101 qualified

RATINGS AND CHARACTERISTICS CURVES

($T_A = 25\text{ }^\circ\text{C}$ unless otherwise noted)

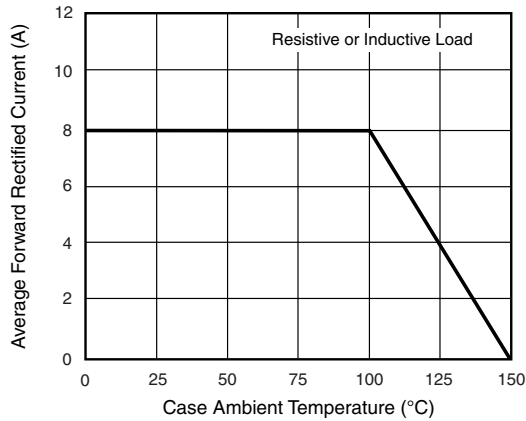


Figure 1. Forward Current Derating Curve

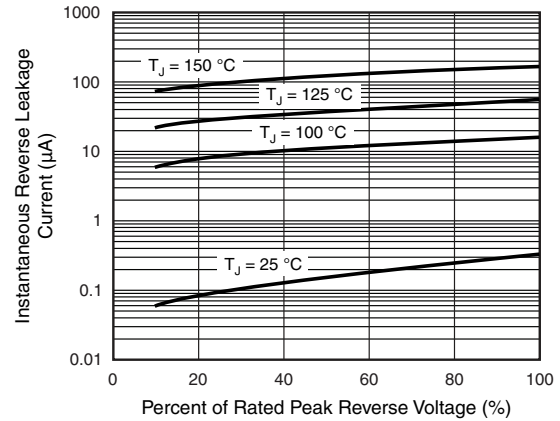


Figure 4. Typical Reverse Leakage Characteristics

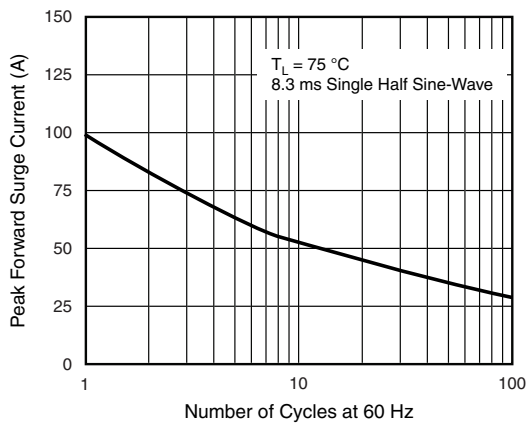


Figure 2. Maximum Non-Repetitive Peak Forward Surge Current

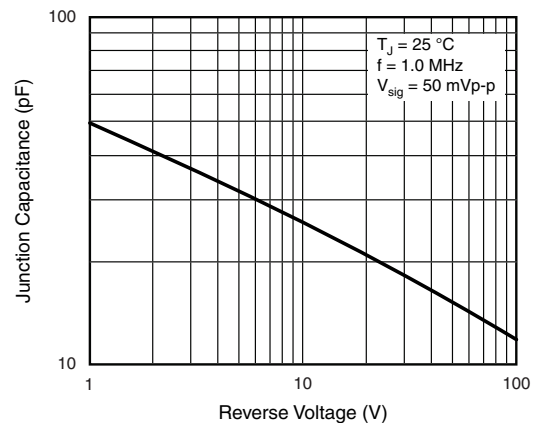


Figure 5. Typical Junction Capacitance

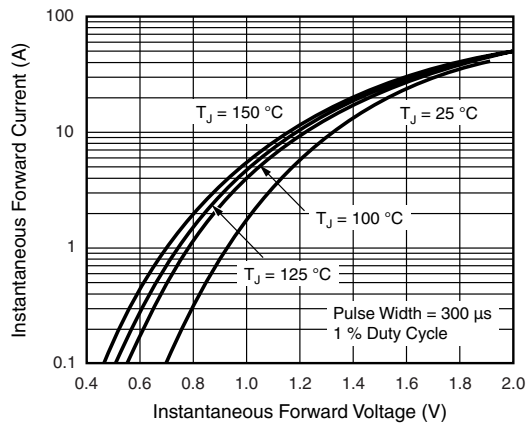


Figure 3. Typical Instantaneous Forward Characteristics

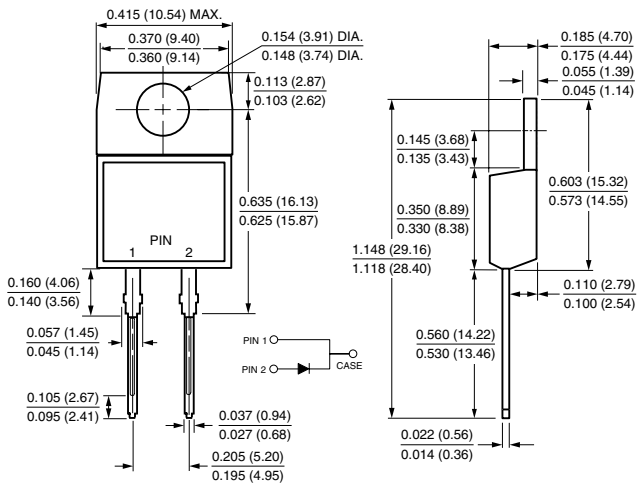
BY229(X,B)-200 thru BY229(X,B)-800

Vishay General Semiconductor

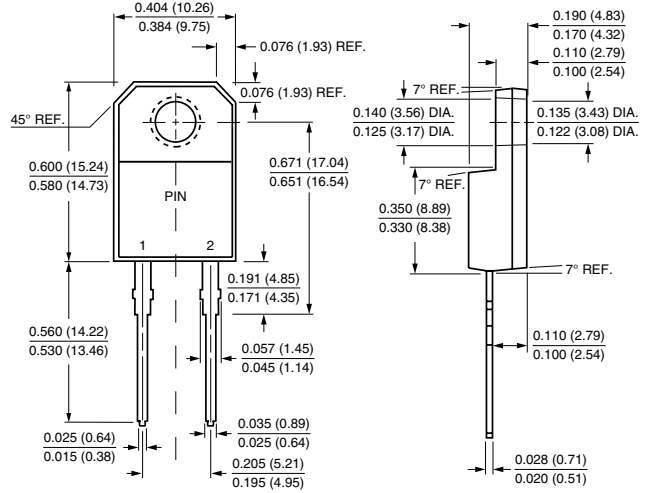


PACKAGE OUTLINE DIMENSIONS in inches (millimeters)

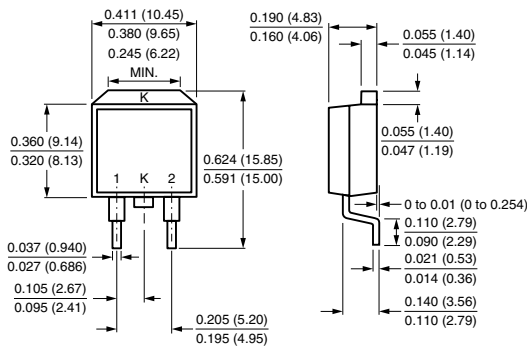
TO-220AC



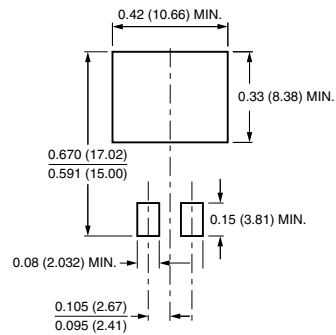
ITO-220AC



TO-263AB



Mounting Pad Layout





Notice

Specifications of the products displayed herein are subject to change without notice. Vishay Intertechnology, Inc., or anyone on its behalf, assumes no responsibility or liability for any errors or inaccuracies.

Information contained herein is intended to provide a product description only. No license, express or implied, by estoppel or otherwise, to any intellectual property rights is granted by this document. Except as provided in Vishay's terms and conditions of sale for such products, Vishay assumes no liability whatsoever, and disclaims any express or implied warranty, relating to sale and/or use of Vishay products including liability or warranties relating to fitness for a particular purpose, merchantability, or infringement of any patent, copyright, or other intellectual property right.

The products shown herein are not designed for use in medical, life-saving, or life-sustaining applications. Customers using or selling these products for use in such applications do so at their own risk and agree to fully indemnify Vishay for any damages resulting from such improper use or sale.