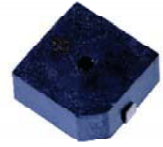


MBS9650 Series

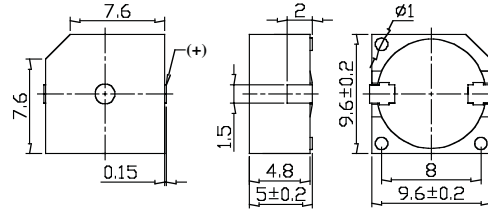
Specifications:

Parameters	Units	MBS9650A03PM	MBS9650A05PM	MBS9650A12PM
▶ Min Sound Pressure Level at 10cm	dBA	85	85	85
Rated Voltage	Vdc	3	5	12
Operating Voltage	Vdc	2 - 5	4 - 7	8 - 15
Resonance Frequency	Hz	2700 ± 300	2700 ± 300	2700 ± 300
▶ Max Operating Current	mA	30	30	30
Tone	-	Continuous	Continuous	Continuous
Operating Temperature	°C	-30 - +85	-30 - +85	-30 - +85
Case Material	-	PPS	PPS	PPS
Weight	g	1.0	1.0	1.0



▶ Value applying rated voltage

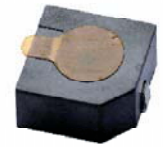
Unit: mm • Tolerance: ±0.5mm



MBS1370 Series

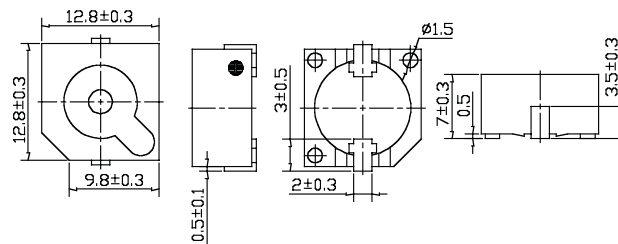
Specifications:

Parameters	Units	MBS1370A03PM	MBS1370A05PM	MBS1370A12PM
▶ Min Sound Pressure Level at 10cm	dBA	85	88	88
Rated Voltage	Vdc	3	5	12
Operating Voltage	Vdc	2 - 5	4 - 7	8 - 15
Resonance Frequency	Hz	2400 ± 400	2400 ± 400	2400 ± 400
▶ Max Operating Current	mA	30	30	30
Tone	-	Continuous	Continuous	Continuous
Operating Temperature	°C	-30 - +85	-30 - +85	-30 - +85
Case Material	-	PPS	PPS	PPS
Weight	g	2.2	2.2	2.2



▶ Value applying rated voltage

Unit: mm • Tolerance: ±0.5mm



MBS1310 Series

Specifications:

Parameters	Units	MBS1310A03PM
▶ Min Sound Pressure Level at 10cm	dBA	85
Rated Voltage	Vdc	5
Operating Voltage	Vdc	4 - 7
Resonance Frequency	Hz	2300 ± 300
▶ Max Operating Current	mA	20
Tone	-	Continuous
Operating Temperature	°C	-30 - +85
Case Material	-	PPS
Weight	g	2.9



▶ Value applying rated voltage

Unit: mm • Tolerance: ±0.5mm

