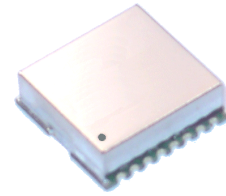


Features

- 4 dBm Output Level at 2042 MHz
- Channel Step Size: 500 kHz
- 2nd Harmonic: < -20 dBc
- Spurious Level: < -65 dBc
- Current Consumption: < 40 mA

Description

The plerow™ PLL synthesizer module was designed for use in wireless and wireline systems in a wide range of frequency from 50 MHz to 6 GHz. ASB's PLL provides exceptionally low spurious and phase noise performance with fast locking time and low current consumption. All products are available in a surface-mount type package.



Specifications

Parameter	Unit	Min.	Typical	Max.
Frequency Range	MHz		2042	
Output Power	dBm	2	4	6
Supply Voltage	V	4.8	5.0	5.2
Current Consumption	mA		28	40
Channel Step Size	kHz		500	
2 nd Harmonics	dBc		-25	-20
Spurious Level	dBc		-72	-65
Reference Frequency	MHz		10	
Reference Input Level	dBm	2	5	
Phase Noise (C / N)				
@ 1 kHz			-74	-68
@ 10 kHz	dBc/Hz		-102	-97
@ 100 kHz			-120	-115
Output Impedance	Ω		50	
Operating Temp. Range	°C	-30	25	80
Package Type & Size	mm	SMT, 19.0W×19.0L×5.8H		

1) Measurement conditions are as follows: T = 25°C, V_{CC} = 5 V, Freq. = 2042 MHz, 50 ohm system.

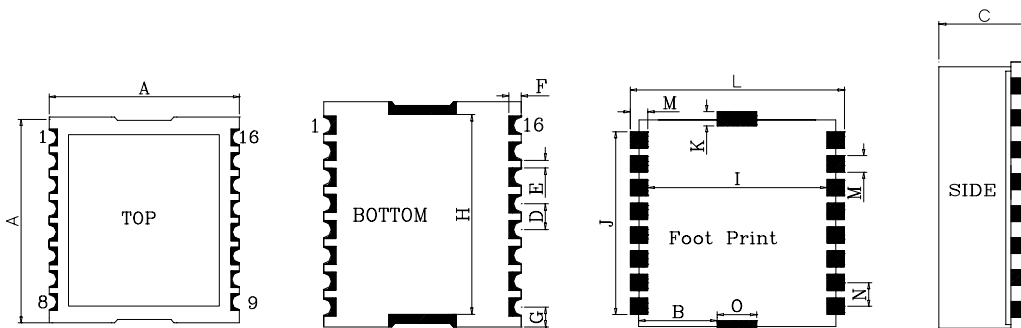
More Information

Website: www.asb.co.kr
 E-mail: sales@asb.co.kr

Tel: (82) 42-528-7225
 Fax: (82) 42-528-7222

ASB Inc., 4th Fl. Venture Town
 Bldg., 367-17 Gojeong-Dong,
 Seo-Gu, Daejeon 302-716, Korea

Outline Drawing



Dimension (UNIT: mm)														
A	B	C	D	E	F	G	H	I	J	K	L	M	N	O
19.0±0.1	5.5	5.8	2.03	0.51	1.35	0.45	17.0	16.3	15.75	2.0	20.6	1.52	2.03	8.0

Pin Out for PLL (All other Pins are Grounded)			
Pin No.	Application	Pin No.	Application
1	CLOCK	9	VCC(VCO)
2	DATA	13	RF OUT
3	ENABLE	15	VCP(PLL)
4	OSC IN	16	LOCK DETECT

Preliminary