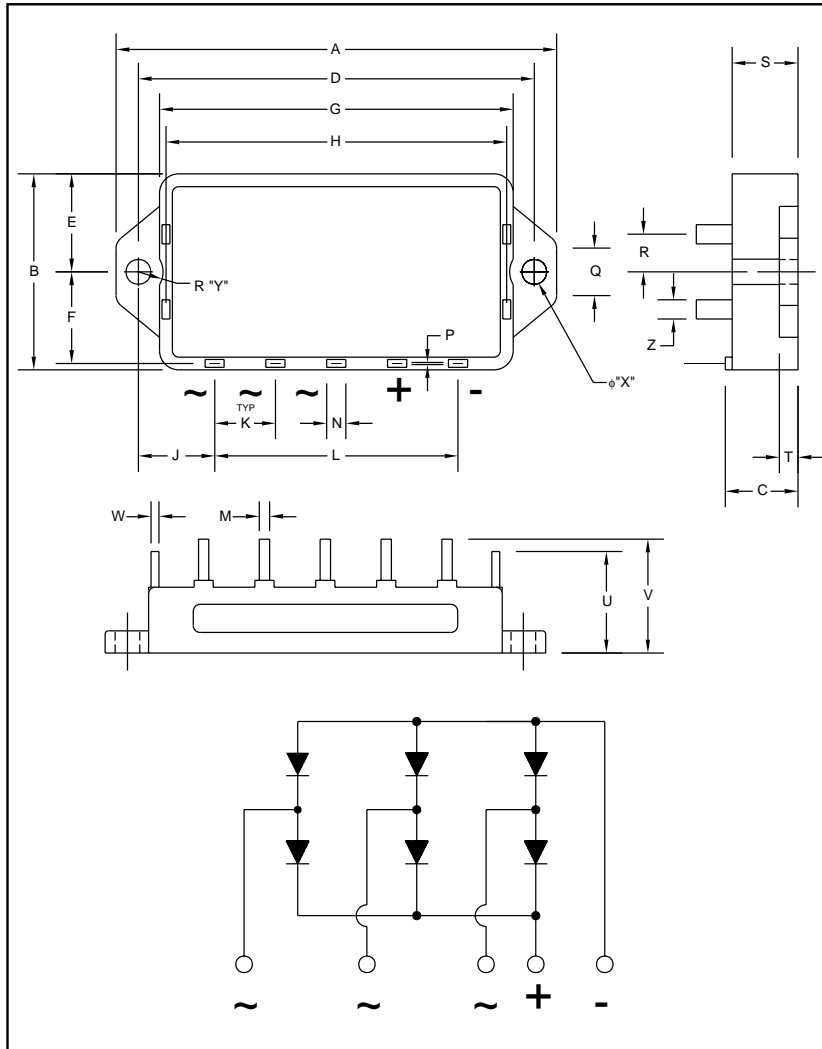


# RM25TN-2H



Outline Drawing and Circuit Diagram

Dimensions	Inches	Millimeters
A	2.83	71.8
B	1.18	30.0
C	0.35	9.0
D	2.55	64.8
E	0.59	15.0
F	0.54	13.7
G	2.32	58.8
H	2.21	56.2
J	0.48	12.08
K	0.40	10.16
L	1.60	40.64
M	0.05	1.20

Dimensions	Inches	Millimeters
N	0.16	4.0
P	0.02	0.6
Q	0.55	14.0
R	0.20	5.0
S	0.35	9.0
T	0.14	3.5
U	0.45	11.5
V	0.71	18.0
W	0.06	1.5
X	0.16	4.0
Y	0.16	4.0
Z	0.08	2.0



## Description:

Mitsubishi Three-Phase Diode Bridge Modules are designed for use in applications requiring rectification of three-phase AC lines into DC voltage. Each module consists of six diodes and the interconnect required to form a complete three-phase bridge circuit. Each diode is electrically insulated from the mounting base plate for easy mounting on a common heatsink with other components.

## Features:

- Isolated Mounting
- Metal Base Plate
- Low Thermal Impedance

## Applications:

- Motor Control
- Inverters
- UPS

## Ordering Information:

RM25TN-2H

## Absolute Maximum Ratings, $T_j = 25^\circ\text{C}$ unless otherwise specified

Ratings	Symbol	RM25TN-2H	Units
Repetitive Peak Reverse Voltage	$V_{RRM}$	1600	Volts
Non-Repetitive Peak Reverse Voltage	$V_{RSM}$	1700	Volts
Recommended AC Input Voltage	$E_A$	440	Volts
DC Output Current ( $T_b = 100^\circ\text{C}$ )	$I_O$	25	Amperes
Surge (Non-Repetitive) Forward Current (One Half Cycle at 60Hz, Peak Value)	$I_{FSM}$	400	Amperes
$I^2t$ for Fusing (Value for One Cycle of Surge Current)	$I^2t$	667	$\text{A}^2\text{sec}$
Junction Temperature	$T_j$	-40 ~ +125	$^\circ\text{C}$
Storage Temperature	$T_{stg}$	-40 ~ +125	$^\circ\text{C}$
Operating Frequency	$f$	1000	Hz
Maximum Mounting Torque M3.5 Mounting Screw	-	0.78 ~ 0.98	$\text{N} \cdot \text{m}$
Maximum Mounting Torque M3.5 Terminal Screw	-	0.78 ~ 0.98	$\text{N} \cdot \text{m}$
Isolation Voltage (Main Terminal to Baseplate, AC 1 min.)	$V_{iso}$	2500	$\text{V}_{rms}$

## Electrical and Thermal Characteristics, $T_j = 25^\circ\text{C}$ unless otherwise specified

Characteristics	Symbol	Test Conditions	Min.	Typ.	Max.	Units
Repetitive Reverse Current	$I_{RRM}$	$T_j = 125^\circ\text{C}$ , $V_{RRM} = \text{Rated}$	-	-	8.0	$\text{mA}$
Forward Voltage Drop	$V_{FM}$	$T_j = 25^\circ\text{C}$ , $I_{FM} = 25\text{A}$ , Instantaneous Measurement	-	-	1.5	Volts
Thermal Resistance	$R_{th(j-b)}$	Junction to Base Plate	-	-	2.0	$^\circ\text{C}/\text{W}$
Thermal Resistance	$R_{th(b-f)}$	Base to Fin, Thermal Grease Applied	-	-	0.3	$^\circ\text{C}/\text{W}$
Isolation Resistance		At 500V DC Between Terminal and Base Plate	10	-	-	$\text{M}\Omega$

