

SECURITY CODE

MITSUBISHI ELECTRIC CORPORATION

Spec. NAME Customer's Std. Spec.	Prepared by	K.Kurachi	REV				
	Checked by						
	Approved by	I.Umezaki					
	DATE	4-Feb.-2008					

HIGH VOLTAGE DIODE MODULE

- 1. **Type Number** RM200DG-130S
- 2. **Structure** Flat base type (Insulated package, AISiC base plate)
- 3. **Application & Customer** High power converters & Inverters for traction application
- 4. **Outline** See Fig. 1
- 5. **Related Specifications**

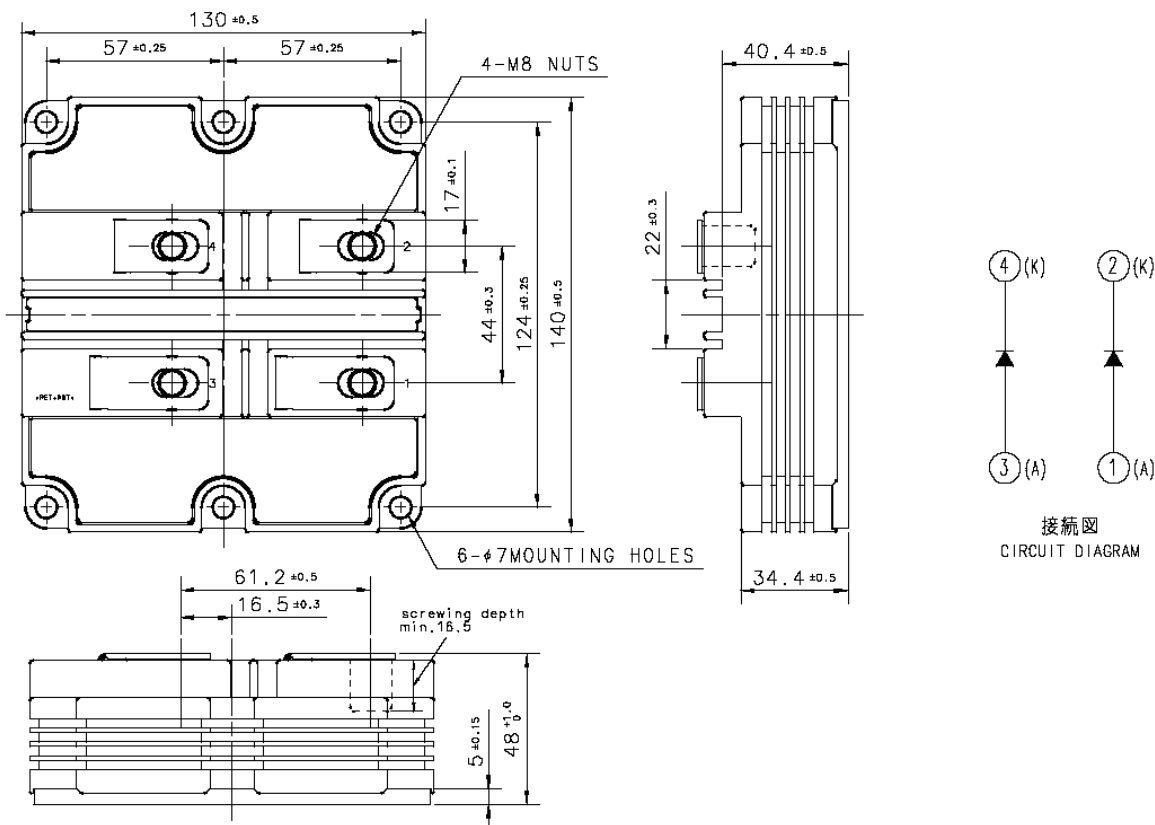


Fig. 1 - Outline drawing

**6. Maximum Ratings**

Item	Symbol	Conditions	Ratings	Unit
6.1 Repetitive peak reverse voltage	$V_{RRM}$	$V_{GE} = 0 \text{ V}, T_j = -40 \text{ }^\circ\text{C}$	5800	V
		$V_{GE} = 0 \text{ V}, T_j = +25 \text{ }^\circ\text{C}$	6300	
		$V_{GE} = 0 \text{ V}, T_j = +125 \text{ }^\circ\text{C}$	6500	
6.2 Non-repetitive peak reverse voltage	$V_{RSM}$	$V_{GE} = 0 \text{ V}, T_j = -40 \text{ }^\circ\text{C}$	5800	V
		$V_{GE} = 0 \text{ V}, T_j = +25 \text{ }^\circ\text{C}$	6300	
		$V_{GE} = 0 \text{ V}, T_j = +125 \text{ }^\circ\text{C}$	6500	
6.3 Reverse DC voltage	$V_{R(DC)}$	$T_j = 25 \text{ }^\circ\text{C}$	4500	V
6.4 DC forward current	$I_F$	$T_c = 25 \text{ }^\circ\text{C}$	200	A
6.5 Surge forward current	$I_{FSM}$	$T_j = 25 \text{ }^\circ\text{C}$ start, $t_w = 8.3 \text{ ms}$ Half sign wave	1600	A
6.6 Surge current load integral	$I^2t$	$T_j = 25 \text{ }^\circ\text{C}$ start, $t_w = 8.3 \text{ ms}$ Half sign wave	11	$\text{kA}^2\text{s}$
6.7 Isolation voltage	$V_{iso}$	Charged part to the baseplate RMS sinusoidal, 60Hz 1min.	10200	V
6.8 Junction temperature	$T_j$	—	-40 ~ +150	$^\circ\text{C}$
6.9 Storage temperature	$T_{stg}$	—	-40 ~ +125	$^\circ\text{C}$
6.10 Operating temperature	$T_{op}$	—	-40 ~ +125	$^\circ\text{C}$
6.11 Maximum reverse recovery instantaneous power	—	$V_R \leq 4500 \text{ V}$ $di/dt \leq 1000 \text{ A}/\mu\text{s}, T_j = 125 \text{ }^\circ\text{C}$ <small>[See Fig.1, Fig.2, 12-5]</small>	1200	kW

**7. Electrical Characteristics**

Item	Symbol	Conditions	Limits			Unit	
			Min.	Typ.	Max.		
7.1 Repetitive reverse current	$I_{RRM}$	$V_{RM} = V_{RRM}$	$T_j = 25 \text{ }^\circ\text{C}$	—	—	3	mA
			$T_j = 125 \text{ }^\circ\text{C}$	—	3	30	
7.2 Forward voltage	$V_{FM}$	$I_F = 200 \text{ A}$	$T_j = 25 \text{ }^\circ\text{C}$	—	4.00	—	V
			$T_j = 125 \text{ }^\circ\text{C}$	—	3.60	—	
7.3 Reverse recovery time	$t_{rr}$	$V_R = 3600 \text{ V}, I_F = 200 \text{ A}$ $di/dt = -670 \text{ A}/\mu\text{s}$ $T_j = 125 \text{ }^\circ\text{C}$  <small>[See Fig.1, Fig.2]</small>	—	1.0	—	$\mu\text{s}$	
7.4 Reverse recovery current	$I_{rr}$		—	420	—	A	
7.5 Reverse recovery charge	$Q_{rr}$		—	300	—	$\mu\text{C}$	
7.6 Reverse recovery energy	$E_{rec}$		—	0.70	—	J/P	

Note 1: It doesn't include the voltage drop by Internal lead resistance.

**8. Thermal Characteristics**

Item	Symbol	Conditions	Limits			Unit
			Min.	Typ.	Max.	
8.1 Thermal resistance	$R_{th(j-c)R}$	Junction to case (per 1/2 module)	—	—	66.0	K/kW
8.2 Contact thermal resistance	$R_{th(c-f)}$	Case to fin Conductive grease applied (per 1/2 module)	—	48.0	—	K/kW

Note 2: Thermal conductivity is 1W/mK with a thickness of 100 $\mu$ m.

**9. Mechanical Characteristics**

Item	Symbol	Conditions	Limits			Unit
			Min.	Typ.	Max.	
9.1 Mounting torque	—	Main terminal screw : M8	7.0	—	15.0	N·m
9.2 Mounting torque	—	Mounting screw : M6	3.0	—	6.0	N·m
9.3 Mass	—	—	—	1.0	—	kg
9.4 Comparative tracking index	CTI	—	600	—	—	—
9.5 Clearance	—	—	26	—	—	mm
9.6 Creepage distance	—	—	56	—	—	mm
9.7 Internal inductance	$L_{A-K(int)}$	—	—	44	—	nH
9.8 Internal lead resistance	$R_{A-K(int)}$	$T_c = 25\text{ }^\circ\text{C}$	—	0.27	—	m $\Omega$

**10. Shipping Inspection Report Item** <sup>(note 3)</sup>

Static characteristics :  $I_{RRM}$  [7.1],  $V_{FM}$  [7.2]

Dynamic characteristics :  $t_{rr}$  [7.3],  $Q_{rr}$  [7.5]

Note 3: One shipping inspection report with the above item values is submitted when modules are delivered. The test conditions are defined in bracket.

11. Test Circuit & Definition of Switching Characteristics

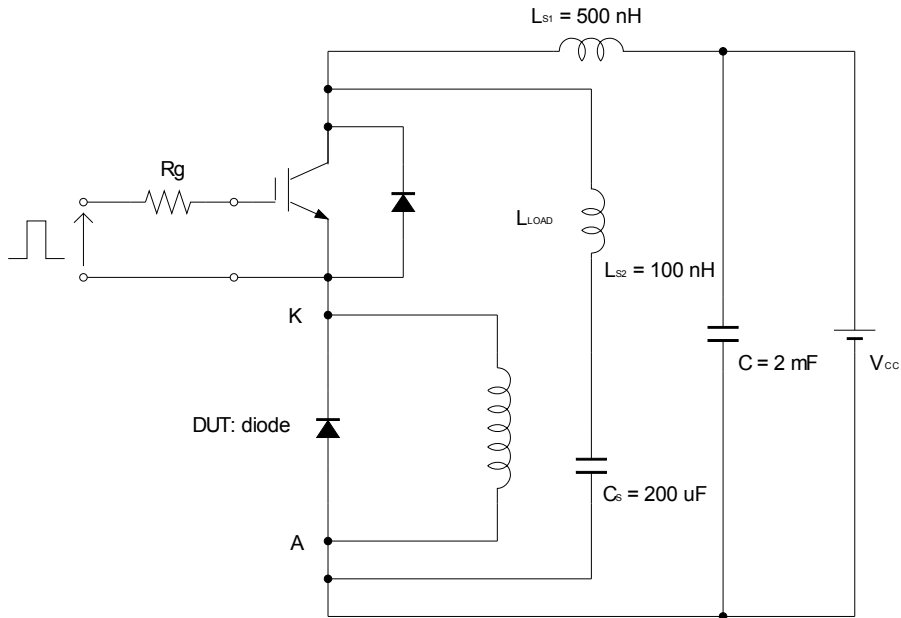
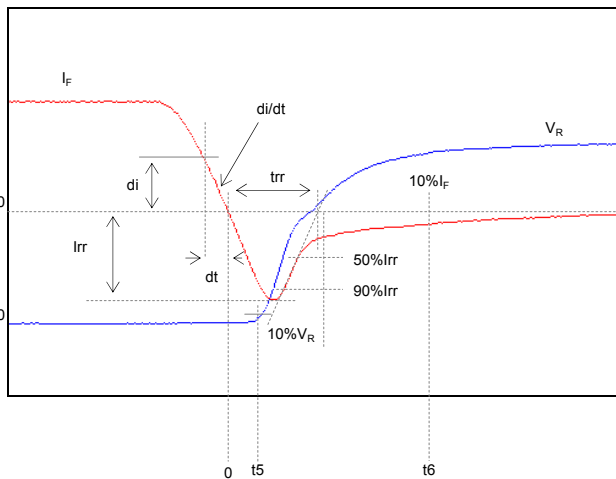


Fig. 1 – Switching test circuit

Diode part: reverse recovery



$$Q_{rr} = - \int_0^{t6} i_f dt$$

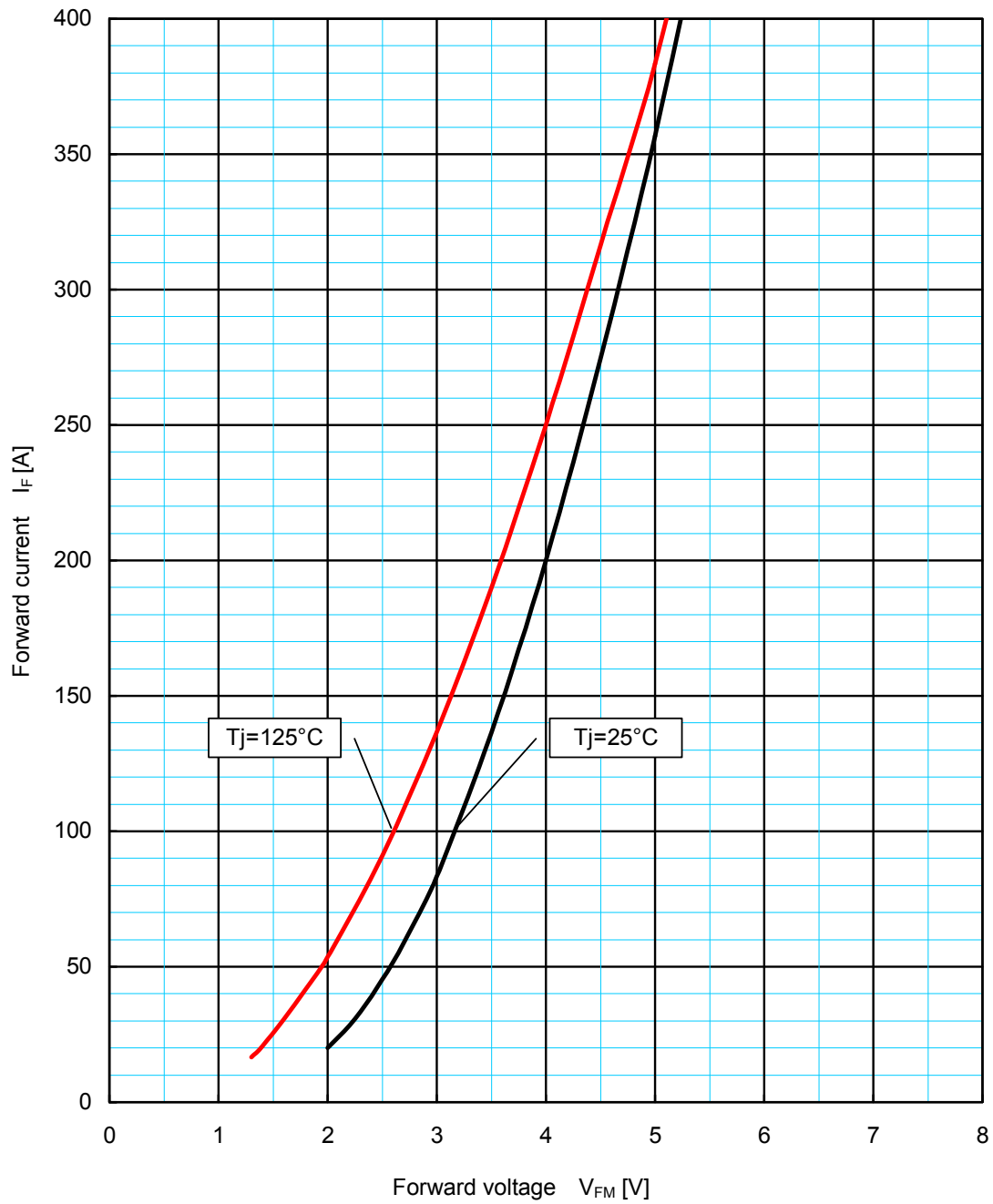
$$E_{rec} = - \int_{t5}^{t6} i_f \cdot v_r dt$$

Fig. 2 – Definitions of reverse recovery charge & energy

**12. Performance curves**

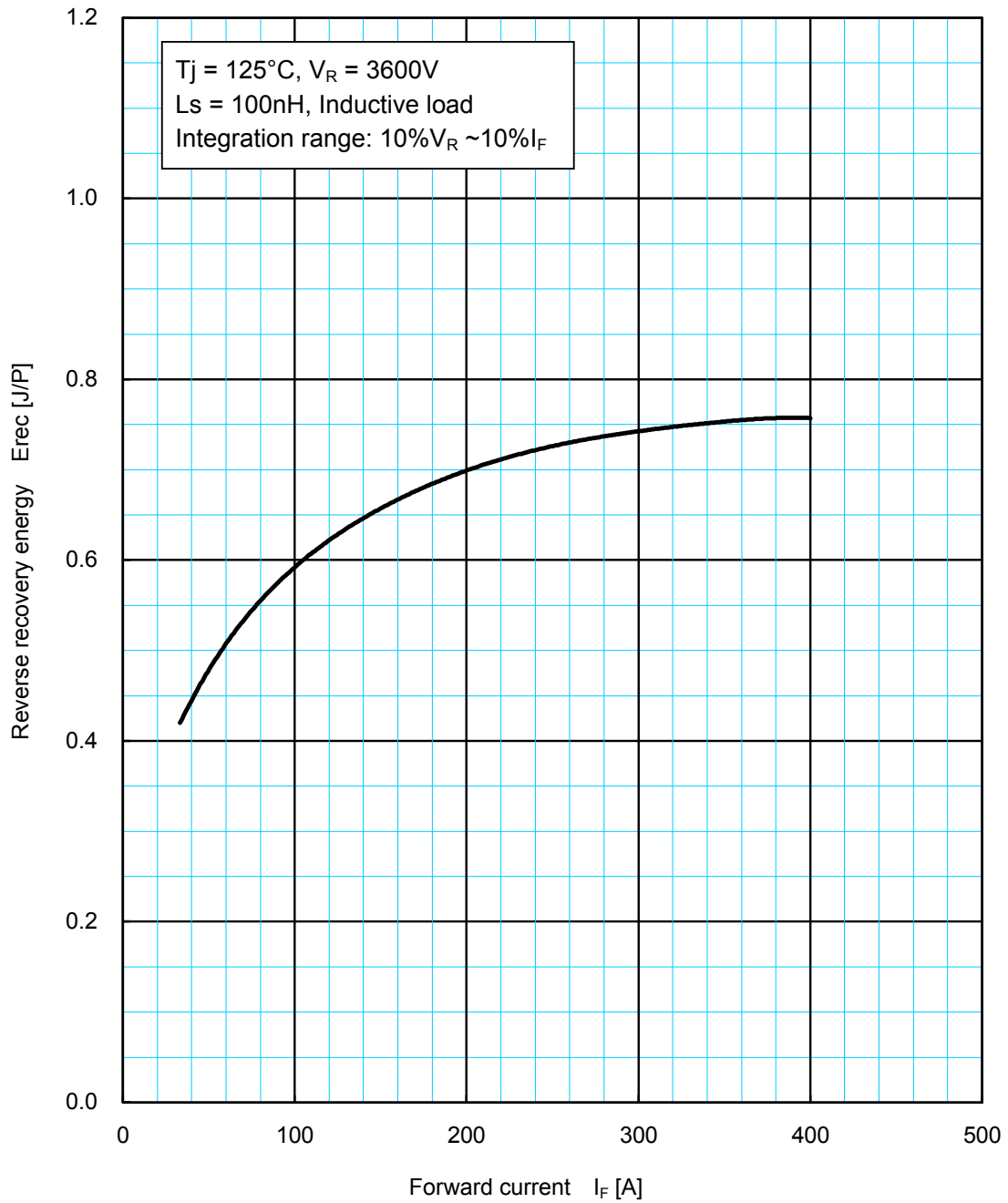
<b>12-1</b>	<b>Forward characteristics .....</b>	<b>6</b>
<b>12-2</b>	<b>Reverse recovery energy characteristics .....</b>	<b>7</b>
<b>12-3</b>	<b>Reverse recovery current characteristics.....</b>	<b>8</b>
<b>12-4</b>	<b>Transient thermal impedance characteristics .....</b>	<b>9</b>
<b>12-5</b>	<b>Reverse recovery safe operating area .....</b>	<b>10</b>

12-1 Forward characteristics



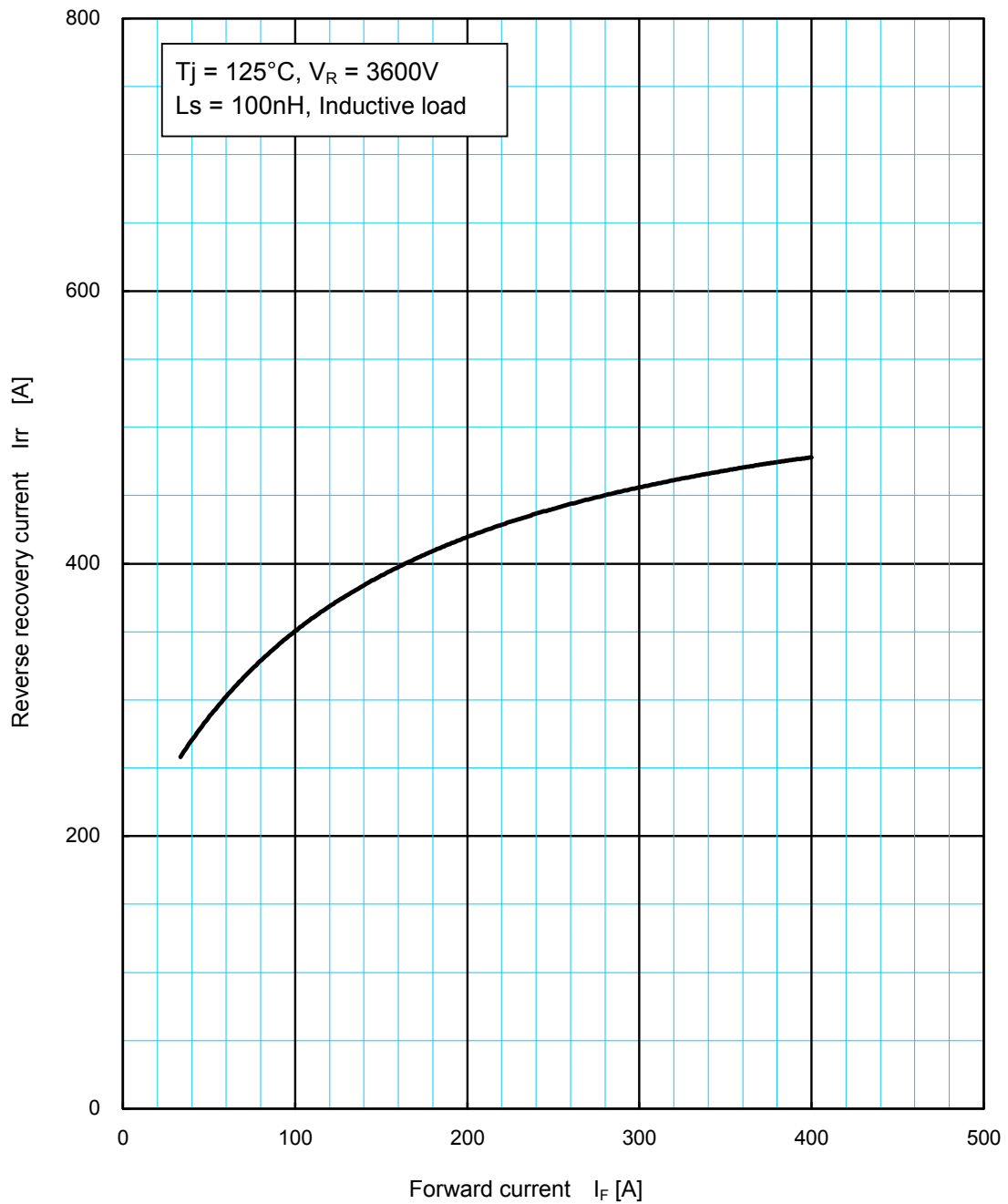
Forward voltage characteristics (typical)

12-2 Reverse recovery energy characteristics



Reverse recovery energy characteristics (typical)

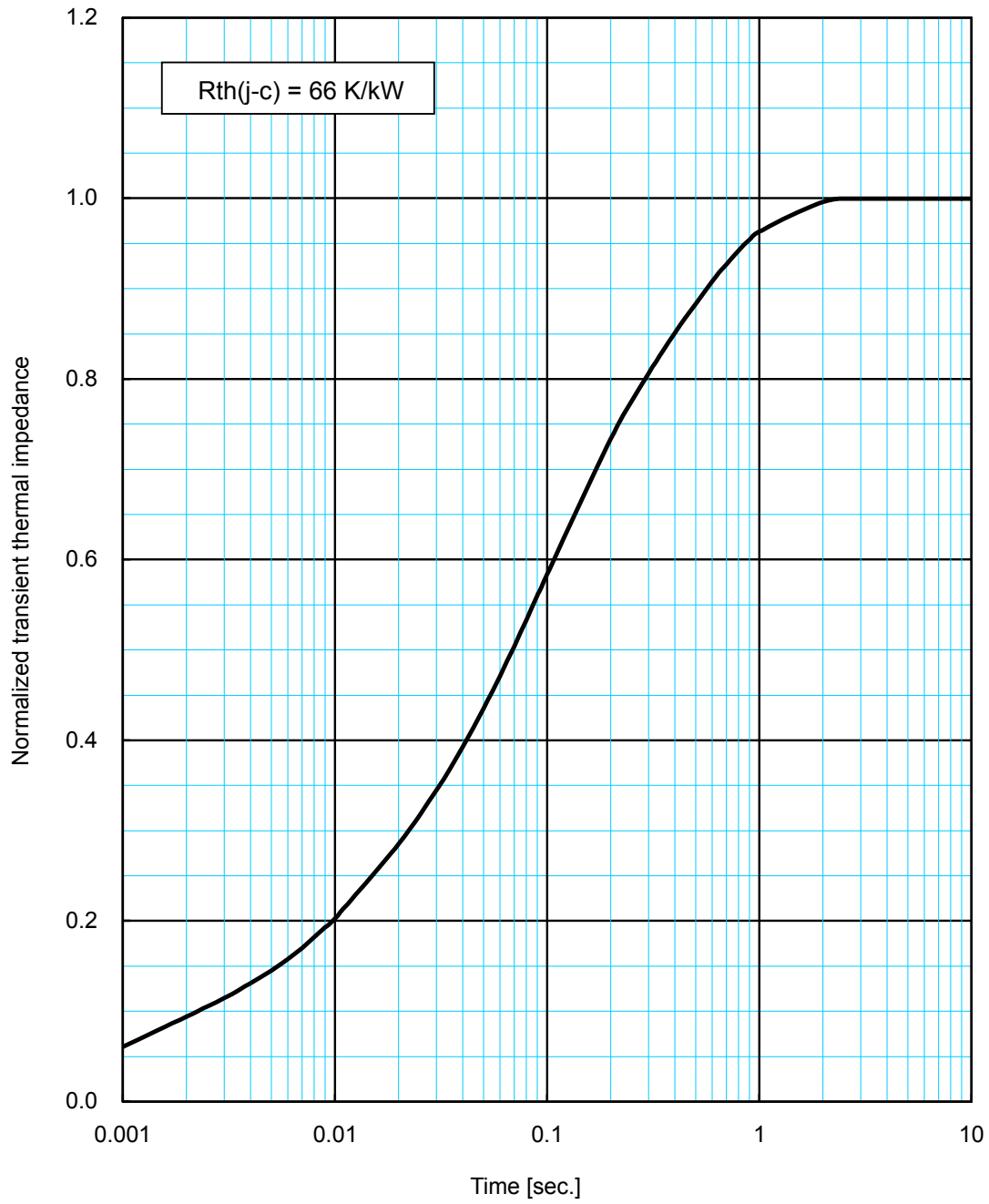
12-3 Reverse recovery current characteristics



Reverse recovery current characteristics (typical)

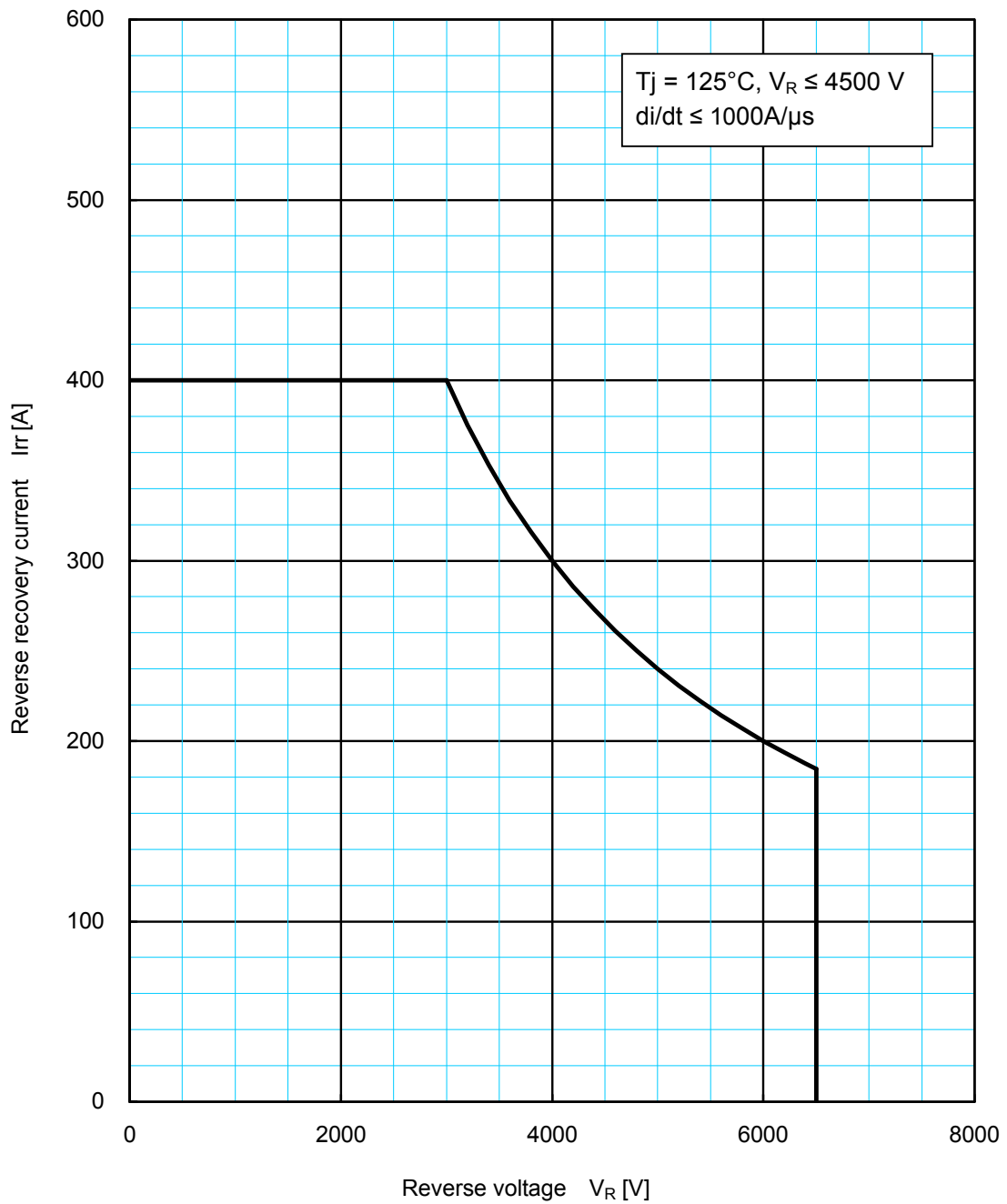


12-4 Transient thermal impedance characteristics



Transient thermal impedance characteristics

12-5 Reverse recovery safe operating area



Reverse recovery safe operating area (RRSOA)

MITSUBISHI ELECTRIC CORPORATION

Rev. No.	Summary of changes	Signature & date
-	Original	K.Kurachi 31-Jan.-2008

HIGH VOLTAGE DIODE MODULE	HVM-2014	(HV-SETSU)	PAGE 11 / 11
---------------------------	----------	------------	-----------------