

Millenium 3 accessories

→ Programmable panels

- Compact panels, backlit LCD, for industrial environments, for use with 24 V DC Millenium
- LED backlighting with 3 colours: green, orange and red, for improved visibility
- Display of predefined objects: text, data, bar charts, trend curve
- TrueType fonts for better display quality in Latin, Cyrillic, Greek, Simplified Chinese or Katakana
- Direct communication via the Millenium 3 programming port or via Modbus protocol
- Simple user-friendly programming using Vijeo Designer Lite (compatible with Windows XP Professional or 32-bit Vista Professional)



N401

- Graphic resolution: 122 x 32 pixels
- 1 line of 5 characters to 4 lines of 20 characters

RT511

- Touch panel (Touch-screen matrix 11 x 5 cells)
- Graphic resolution: 198 x 80 pixels
- 2 lines of 5 characters to 10 lines of 33 characters

Part numbers

Type	Designation	Code
RD	N401 "direct" user kit (N401 panel, N401 link cable → M3)	88970472
	N401 programming pack (Vijeo Designer Lite CD, RS232C prog. cable → N401)	88970473
	N401 "Modbus" user kit (N401 panel, Modbus RJ45 cable → N401)	88970474
	RT511 "direct" user kit (RT511 panel, RT511 link cable → M3)	88970482
	RT511 programming pack (Vijeo Designer Lite CD, RS232C prog. cable → RT511)	88970483
	RT511 "Modbus" user kit (RT511, Modbus RJ45 cable → RT511)	88970484

Accessories

Type	Description	Code
MA	Protective sleeves for N401 (in packs of 10)	88970475
MA	Sheets of labels for N401 (in packs of 10 sheets of 6 labels)	88970476
MA	N401 front panel sealing kit (flush-mounting frame)	88970477
MA	Protective sleeves for RT511 (in packs of 10)	88970485
MA	Sheets of labels for RT511 (in packs of 10 sheets of 6 labels)	88970486
MA	RT511 front panel sealing kit (flush-mounting frame)	88970487
MA	Printer cable for N401 & RT511 DB9 → Mini-Din (RS232) *	88970489
PA	PC: USB → DB9 (RS 232) link cable	88950105

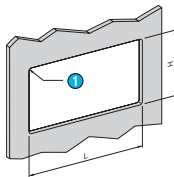
General characteristics

	N401	RT511
Environmental characteristics		
Certifications	EC, UL	EC, UL
Conformity to standards	IEC 61131-2, UL508, CSA C22-2 no. 14	IEC 61131-2, UL508, CSA C22-2 no. 14
Operating temperature	0 → +55°C	0 → +55°C
Storage temperature	-20 → +60°C	-20 → +60°C
Relative humidity	0 → 85% (without condensation)	0 → 85% (without condensation)
Protection rating	Front: IP65 according to IEC 60529, Nema 4X ("out door use") Rear: IP20 according to IEC 60529	Front: IP65 according to IEC 60529, Nema 4X ("out door use") Rear: IP20 according to IEC 60529
Shock resistance	According to IEC 60068-2-27, semi-sinusoidal impulse 11 ms, 15 gn on 3 axes	According to IEC 60068-2-27, semi-sinusoidal impulse 11 ms, 15 gn on 3 axes
Vibration resistance	IEC 60068-2-6, ± 3.5 mm, 2 → 8.45 Hz, 1 gn 8.45 → 150 Hz	IEC 60068-2-6, ± 3.5 mm, 2 → 8.45 Hz, 1 gn 8.45 → 150 Hz
Resistance to electrostatic discharge	According to IEC 61000-4-2, level 3	According to IEC 61000-4-2, level 3
Resistance to HF interference	According to IEC 61000-4-3, 10 V/m According to IEC 61000-4-4, level 3	According to IEC 61000-4-3, 10 V/m According to IEC 61000-4-4, level 3

Electrical characteristics		
Supply voltage	24 V $\overline{---}$	24 V $\overline{---}$
Voltage limits	18 \rightarrow 30 V $\overline{---}$ \pm 5%	18 \rightarrow 30 V $\overline{---}$ \pm 5%
Consumption	5 W max.	5 W max.
Mechanical characteristics		
Dimensions (l x h x p)	132 x 74 x 43 mm Useful screen area (W x H) : 17.36 x 59 mm	132 x 118 x 39 mm Useful screen area (W x H) : 40 x 89 mm
Panel cut-out	119.4 x 63 mm \pm 0.4	119.6 x 105.2 mm \pm 0.5
Density	1 \rightarrow 5	1 \rightarrow 5
Mounting	Flush-mounted, fixed with 2 spring clips supplied pressure-mounted for panels	Flush-mounted, fixed with 4 spring clips supplied pressure-mounted for panels
Weight (g)	380	550
Display characteristics		
Description	High brightness backlit LCD Resolution: 122 x 32 pixels 1 line of 5 characters to 4 lines of 20 characters LED backlighting in 3 colours: green, orange, red 512 Kb flash memory	High brightness backlit LCD Resolution: 198 x 80 pixels 2 lines of 5 characters to 10 lines of 33 characters LED backlighting with 3 colours: green, orange, red 512 Kb Flash memory
Display unit touch-sensitive zone	NA	Matrix, 11 x 5 cells
Language	English, French, German, Italian, Spanish	English, French, German, Italian, Spanish
Display details	Latin, Cyrillic, Greek, Katakana and Simplified Chinese	Latin, Cyrillic, Greek, Katakana and Simplified Chinese
Status indication	6 LEDs	13 LEDs + buzzer
Number of screens	25 lines/page max. Applications: 200 pages Alarms: 256 pages	10 lines/page max. Applications: 200 pages Alarms: 256 pages
Connection	RS 232C/RS 485 Removable 3-pin screw terminal block Direct link using the Millenium programming port via the communication OR printer cable Connector: 25-pin female SUB-D (RS 232C/RS 485) Connection: Multidrop	RS 232C/RS 485 Removable 3-pin screw terminal block Direct link using the Millenium programming port via the communication OR printer cable Connector: Female RJ45 (RS 232C/RS 485) Connection: Multidrop
Protocol	Modbus, Millenium 3 (SLIn & SLOut)	Modbus, Millenium 3 (SLIn & SLOut)

Dimensions (mm)

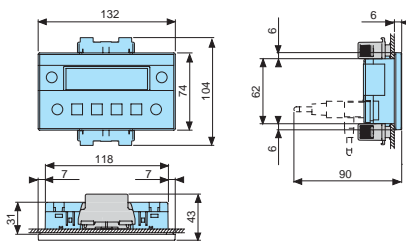
Panel cut-out



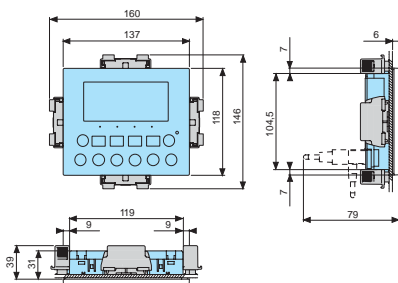
① R = 1.5 mm maxi.

N401 :
L = 119.4 \pm 0.4
H = 63 \pm 0.4
RT511 :
L = 119.6 \pm 0.5
H = 105.2 \pm 0.5

N401

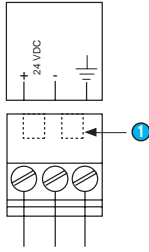


RT511



Connections

N401 & RT511



1 Spigot

Other information

Material:

- Panel protection: Polyester
- Front surround: Polycarbonate/polybutylene terephthalate alloy
- Keyboard: Polyester

Keys:

- N401: 8 keys, 6 of which are configurable and 4 customisable
- RT511: 12 keys, 10 of which are configurable and customisable