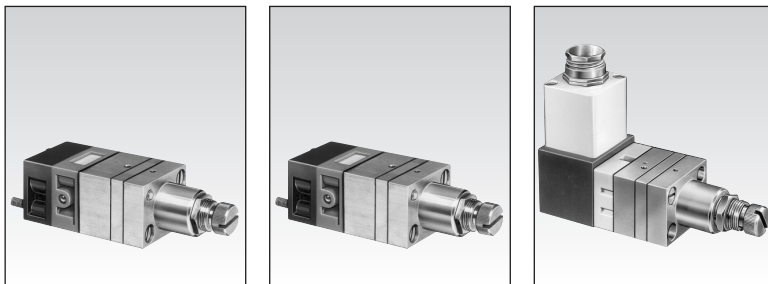


Adjustable vacuum switches (vacuostat)



Counter balance leakage

Yes

Yes

Part numbers

81 505 110

Positive output (N.C.)

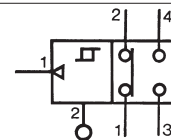
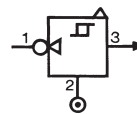
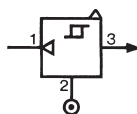
81 502 110

Negative output (N.O.)

81 508 110

Electrical output

Symbol

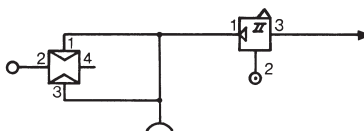


Characteristics

Adjustment range	mmHg (bar)	3 > 23 (-0.1 > -0.9)	3 > 23 (-0.1 > -0.9)	-0.1 • -0.9
Flow at 6 bars	cfm (NL/min)	6 (170)	6 (170)	6 (170)
Hysteresis	mmHg (mb)	3 (80)	3 (80)	80
Connection - sub-base page 4/14-4/15				
Operating temperature	$^{\circ}\text{F (}^{\circ}\text{C)}$	+20 > +120 (-5 > +50)	+20 > +120 (-5 > +50)	-5 +50
Mechanical life	operations	3 Million	3 Million	3 x 10 ⁶
Weight	grams	160	160	180
Relay color		Light gray	Yellow	

Connections

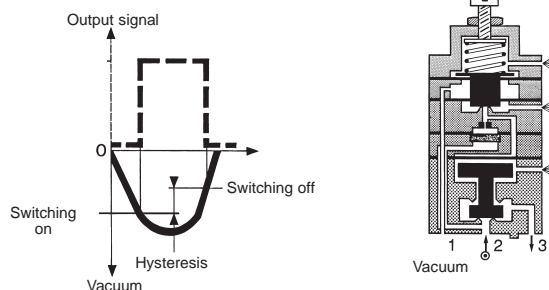
Example of use:
Vacuum handling (vacuum generator, vacuum pad, vacuostats).



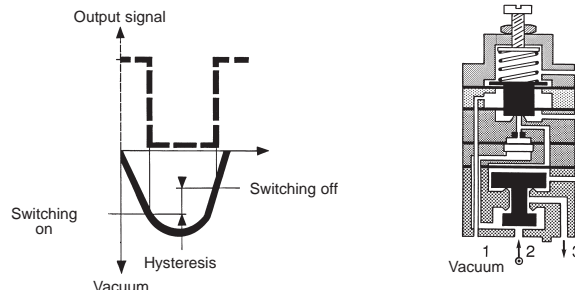
Principle of operation

Vacuostats provide an on or off output signal when the input signal reaches a predetermined pressure threshold.

Positive output (N.C.)

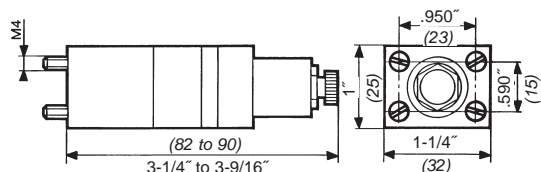


Negative output (N.O.)

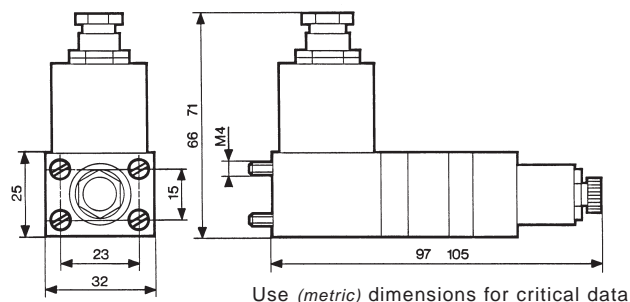


Dimensions

81 502 110 - 81 505 110



81 508 110



Other information	To order, specify :
	<p>Standard products</p> <p>Standard products, non stocked</p> <p>1 Part number Example : Adjustable vacuum switches (vacuostat) - 81 505 110</p>

Products and specifications subject to change without notice.

Consult factory for application assistance.

204 Airline Drive, Suite 300, Coppell, Texas 75019 / Tel: (888) 778-2733 / FAX: (888) 329-9773 / www.crouzet-usa.com

