

IEC Appliance Inlet C14 with Line Switch 1- or 2-pole



new

C14



70° C

**Description**

- Panel Mount:  
Screw-on version from front or rear side, snap-in version from front side
- 2 Functions:  
Appliance Inlet Protection class I, Line Switch 1- or 2-pole
- Quick connect terminals 4.8 x 0.8 mm
- Alternative: version with line filter [DC12](#)
- Substitute for type [KEB1](#); [KEB2](#) Meets the glow wire test acc. IEC60335-1 edition 4

**Approvals**

- VDE License Number: 40007009
- UL License Number: E96454

**Characteristics**

- Ultra-compact design
- All single elements are already wired  
Unwired versions available on request
- Line switch non-illuminated or illuminated
- Ideal for application with high transient loads
- Qualified for use in equipment according IEC/EN 60950

**Other versions on request**

- Snap-in, panel thickness 1 and 3 mm
- Unwired versions
- Solder terminals
- Line switch with other rocker marking
- For protection class II

**References**

[General Product Information](#)

**Weblinks**

[Approvals](#), [RoHS](#), [CHINA-RoHS](#), [Mating Connectors](#), [e-Store](#), [SCHURTER-Stock-Check](#), [Distributor-Stock-Check](#)

**Technical Data**

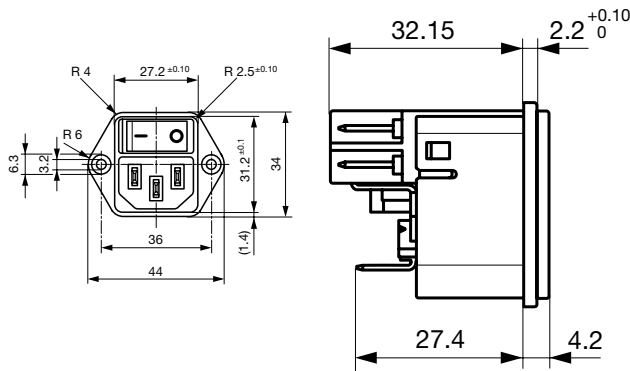
Ratings IEC	10A / 250VAC; 50Hz
Ratings UL/CSA	15A / 250VAC; 50/60Hz <sup>1)</sup>
Dielectric Strength	> 2.5kVAC between L-N > 3kVAC between L/N-PE (1 min/50Hz)
Allowable Operation Temp.	-25°C to 70°C
Degree of Protection	from front side IP 40 acc. to IEC 60529
Protection Class	Suitable for appliances with protection class 1 acc. to IEC 61140
Terminal	Quick connect terminals 4.8 x 0.8 mm
Panel Thickness s	Screw: max 6 mm Mounting screw torque max 0.5 Nm Snap-in: 1.5/ 2/ 2.5 mm
Material: Housing	Thermoplastic, black, UL 94V-0

Appliance Inlet	C14 acc. to IEC/EN 60320-1, UL 498, CSA C22.2 no. 42 (for cold conditions) pin-temperature 70 °C, 10A, Protection Class 1
Line Switch	Rocker switch 1 or 2 pole, non-illuminated or illuminated, acc. to IEC 61058-1 <a href="#">Technical details</a>

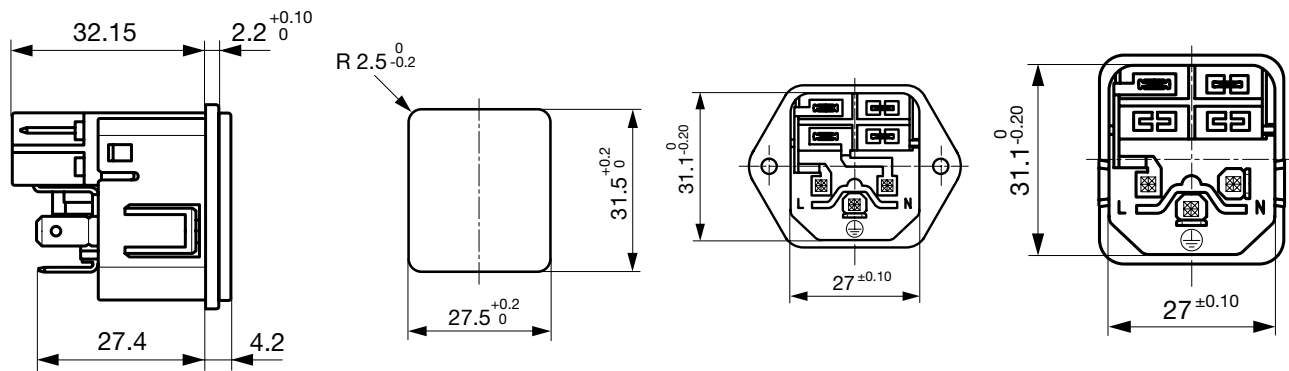
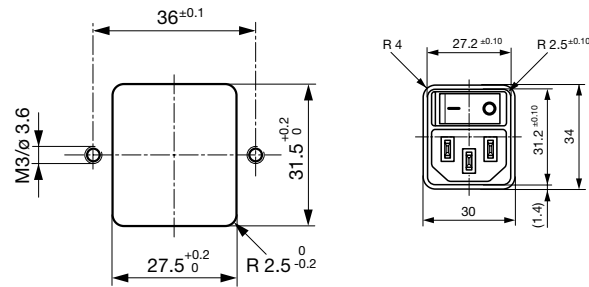
1) Standard version 12 A / special version 15A

## Dimensions

Screw on PCB mounting

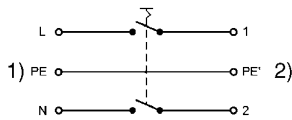


Snap-in mounting



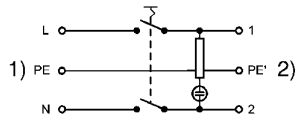
## Diagrams

Line switch non-illuminated 2-pole



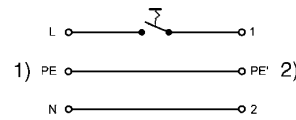
1) Line 2) Load

Line switch illuminated 2-pole



1) Line 2) Load

Line switch non-illuminated 1-pole



1) Line 2) Load

## Variants

Distributor-Stock-Check | SCHURTER-Stock-Check | e-Store

with internal connections

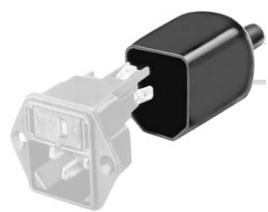

Rated Current UL [A]	Panel mounting	Panel Thickness s [mm]	Line Switch	Illumination	Color	Order Number
12	Screw	-	2-pole	●	red	DC11.0021.001
15	Screw	-	2-pole	●	red	DC11.0021.006
12	Screw	-	2-pole	●	green	DC11.0031.001
12	Screw	-	1-pole	-	-	DC11.0001.003
15	Screw	-	1-pole	-	-	DC11.0001.007
12	Screw	-	2-pole	-	-	DC11.0001.001
15	Screw	-	2-pole	-	-	DC11.0001.006
12	Snap-in	1.5	2-pole	●	red	DC11.0021.201
15	Snap-in	1.5	2-pole	●	red	DC11.0021.206
12	Snap-in	2	2-pole	●	red	DC11.0021.301
12	Snap-in	2.5	2-pole	●	red	DC11.0021.401
12	Snap-in	1.5	2-pole	●	green	DC11.0031.201
12	Snap-in	2	2-pole	●	green	DC11.0031.301
12	Snap-in	2.5	2-pole	●	green	DC11.0031.401
12	Snap-in	1.5	1-pole	-	-	DC11.0001.203

Rated Current UL [A]	Panel mounting	Panel Thickness s [mm]	Line Switch	Illumination	Color	Order Number
15	Snap-in	1.5	1-pole		-	DC11.0001.207
12	Snap-in	2	1-pole		-	DC11.0001.303
12	Snap-in	2.5	1-pole		-	DC11.0001.403
12	Snap-in	1.5	2-pole		-	DC11.0001.201
15	Snap-in	1.5	2-pole		-	DC11.0001.206
12	Snap-in	2	2-pole		-	DC11.0001.301
12	Snap-in	2.5	2-pole		-	DC11.0001.401




All variants according VDE (ENEC 10) approved for 10 A

**Packaging unit** 50 Pcs

**Accessories**

Description		
	Assorted Covers	0859.0047
	Rear Cover	4311.9403
	Cord retaining kits	
	Cord retaining strain relief	
	Flat head, A	4700.0001
	Countersunk, B	4700.0002

**Mating Outlets/Connectors**

Category / Description		
	<a href="#">Appliance Outlet Overview complete</a>	
	IEC Appliance Outlet F, Screw-on Mounting, Front Side, Solder or Quick-connect Terminal	4787
	IEC Appliance Outlet F, Snap-in Mounting, Front Side, Solder or Quick-connect Terminal	4788
	IEC Appliance Outlet F or H, Screw-on Mounting, Front Side, Solder, PCB or Quick-connect Terminal	5091
	IEC Appliance Outlet F or H, Screw-on Mounting, Front Side, Solder or Quick-connect Terminal	5092
	<a href="#">Appliance Outlet further types to DC11</a>	
	<a href="#">Connector Overview complete</a>	
	IEC Connector C15, Rewireable, Straight	0101
	IEC Connector C15A, Rewireable, Straight	0102
	IEC Connector C15A, Rewireable, Straight	0102-G
	IEC Connector C15A, Rewireable, Angled	0112
	IEC Connector C13, Rewireable, Angled	4012
	<a href="#">Connector further types to DC11</a>	...
	<a href="#">Power Cord Overview complete</a>	
	Power Cord with IEC Connector C13, Angled	0311
	Power Cord with IEC Connector C13, Angled	3011
	Power Cord with IEC Connector C13, Angled	3012
	Power Cord with IEC Connector C13, Angled	3013
	Power Cord with IEC Connector C13	3020
	<a href="#">Power Cord further types to DC11</a>	...

