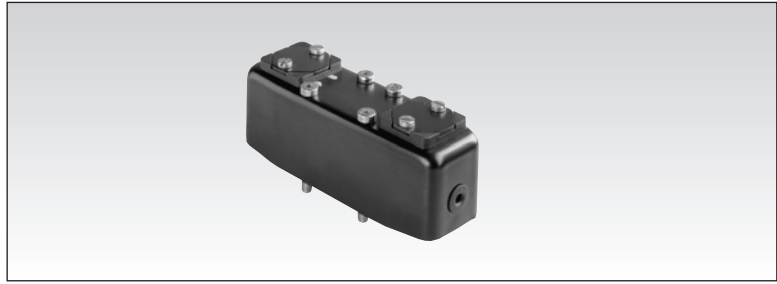


Control valves, ISO 5599-size 1 footprint



Part numbers

	89 541 007	89 541 037	89 541 047	89 541 067
Pneumatic pilot	Air pilot spring return	Double air pilot	Double air pilot closed center	Double air pilot open center
Function	5/2	5/2	5/3	5/3

1

Symbol

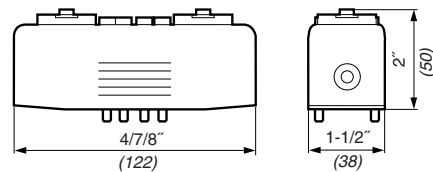


Characteristics

Operating pressure with internal pilot supply	psi (bar)	45>150(+3 > +10)	45>150(+3 > +10)	45>150(+3 > +10)	45>150(+3 > +10)
Operating pressure with external pilot supply	psi (bar)	vacuum to 180(-0.950>12)	vacuum to 180(-0.950>12)	vacuum to 180(-0.950>12)	vacuum to 180(-0.950>12)
Pilot pressure	psi (bar)	45>150(3>10)	45>150(3>10)	45>150(3>10)	45>150(3>10)
Operating temperature	°F (°C)	+15>+150(-10> +70)	+15>+150(-10> +70)	+15>+150(-10> +70)	+15>+150(-10> +70)
Flow at 90 psi(6 bars) (ANR)	cfm (NL/min)	50(1400)	50(1400)	50(1400)	50(1400)
Life (cycles)		30 million	30 million	30 million	30 million
Mounting plan : ISO standard 5599-01					
Weight	(grams)	415	415	415	415

Dimensions

89 541-



Products available to order (please consult us)

Electro-pneumatic control	Air pilot spring return	Double air pilot 5/2	Double air pilot closed center 5/3	Double air pilot open center 5/3
Function				

Symbol



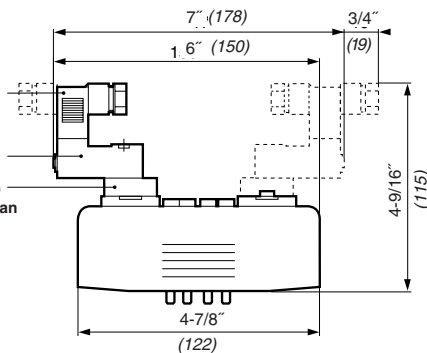
Dimensions

On request

Connector Ref : 81 516 082
see page 5/9

Miniature solenoid valve
Ref : 81 519 ...
see page 5/4

Adaptor sub-base Ref 79 453 569
for CNOMO 06.05.80 mounting plan



use (metric) dimensions for critical data

Other information	To order, specify :
For characteristics of pilot solenoid valve, see page 5/4	<p>Standard products</p> <p>1 Part number Example : Pneumatic control valve - 81 541 007</p> <p>Made to order products, please consult us</p>

Products and specifications subject to change without notice.

Consult factory for application assistance.

204 Airline Drive, Suite 300, Coppell, Texas 75019 / Tel: (888) 778-2733 / FAX: (888) 329-9773 / www.crouzet-usa.com