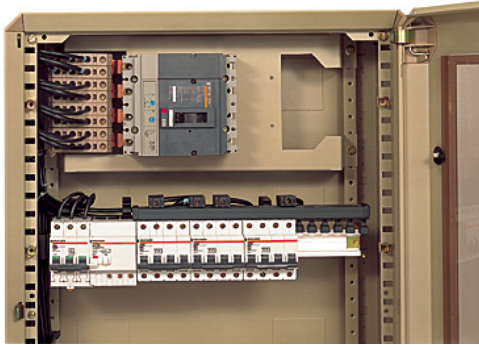


Product data sheet

Characteristics

14888

tooth cap for 1P, 2P , 3P, 4P comb busbar - set of 40



Main

Range of product	C60 DPN ID STI
Device short name	Tooth cover ends
Poles description	1P 2P 3P 4P
Quantity per set	Set of 40
Accessory / separate part type	Connection accessories

Environment

RoHS EUR conformity date	3Q2008
RoHS EUR status	Will be compliant

The information provided in this documentation contains general descriptions and/or technical characteristics of the performance of the products contained herein. This documentation is not intended as a substitute for and is not to be used for determining suitability or reliability of these products for specific user applications. It is the duty of any such user or integrator to perform the appropriate and complete risk analysis, evaluation and testing of the products with respect to the relevant specific application or use thereof. Neither Schneider Electric Industries SAS nor any of its affiliates or subsidiaries shall be responsible or liable for misuse of the information contained herein.