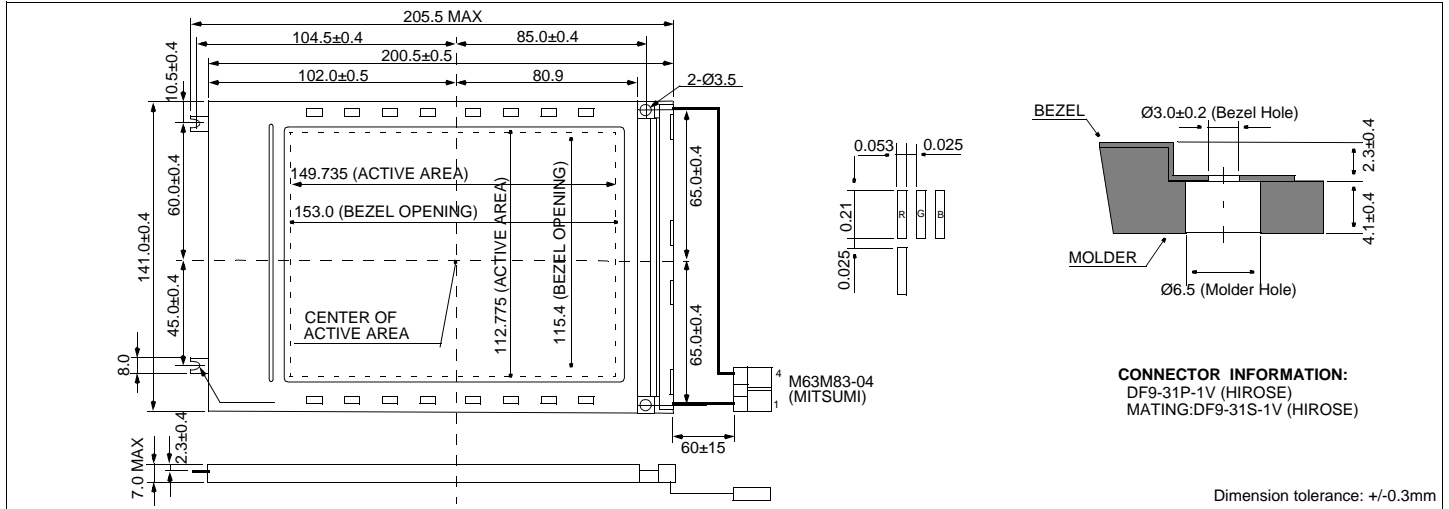


# HDM6448SC

## Dimensional Drawing

640 X 480 Dots Color Graphic Small Size CCFL Backlight



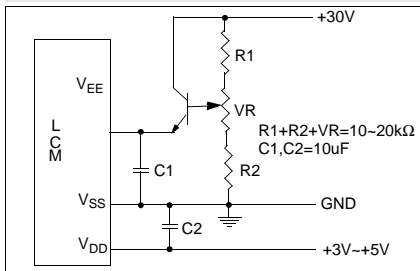
### Features

- Backlight.....CCFL
- Options.....Color RGB
- Bottom Viewing
- Built-in Controller.....None

### Physical Data

- Module Size.....205.5W x 141.0H x 7.7 mm
- Viewing Area Size.....153.0W x 115.4H mm
- Dot Pitch.....0.078W x 0.235H mm
- Dot Size.....0.053W x 0.21H mm
- Weight.....310g

### Power Supply



### Absolute Maximum Ratings

PARAMETER	SYMBOL	MIN	MAX	UNIT
SUPPLY VOLTAGE	V <sub>DD</sub> -V <sub>SS</sub>	-0.3	6.5	V
SUPPLY VOLTAGE FOR LCD	V <sub>EE</sub> -V <sub>SS</sub>	0	42.0	V
INPUT VOLTAGE	V <sub>IN</sub>	-0.3	6.8	V

### Electrical Characteristics (V<sub>DD</sub>=5.0±0.25V 25°C)

PARAMETER	SYM	CONDITION	MIN	TYP	MAX	UNIT
INPUT HIGH VOLTAGE	V <sub>IH</sub>	-	0.8 V <sub>DD</sub>	-	V <sub>DD</sub>	V
INPUT LOW VOLTAGE	V <sub>IL</sub>	-	0	-	0.2 V <sub>DD</sub>	V
SUPPLY VOLTAGE	V <sub>DD</sub>	-	4.5	5.0	5.5	V
	V <sub>EE</sub> -V <sub>SS</sub>	25°C	23.3	23.5	23.6	V
LOGIC CURRENT	I <sub>DD</sub>	V <sub>DD</sub> =5V	-	18.8	28.5	mA
LCD CURRENT	I <sub>EE</sub>	V <sub>DD</sub> =5V	-	8.0	12.5	mA
DRIVE METHOD	1/240 DUTY					

### Pin Connections

PIN NO.	SYMBOL	LEVEL	FUNCTION
<b>DATA CONNECTOR</b>			
1	FLM	H	First Line Marker
2	M	H/L	AC signal for LCD
3	DISPOFF	H/L	H=On, L=Off
4	CL1	H	Latch pulse
5	V <sub>SS</sub>	0V	Ground
6	CL2	H	Data shift clock
7	V <sub>SS</sub>	0V	Ground
8	UD0	H/L	Upper data bus
9	UD1	H/L	
10	UD2	H/L	
11	UD3	H/L	
12	UD4	H/L	
13	UD5	H/L	
14	UD6	H/L	
15	UD7	H/L	Lower data bus
16	LD0	H/L	
17	LD1	H/L	
18	LD2	H/L	
19	LD3	H/L	
20	LD4	H/L	
21	LD5	H/L	
22	LD6	H/L	Power supply for logic
23	LD7	H/L	
24	V <sub>DD</sub>	5V	Ground
25	V <sub>SS</sub>	0V	
26	V <sub>SS</sub>	0V	Operating voltage for LC
27	V <sub>EE</sub>	-	
28	V <sub>EE</sub>	-	Operating voltage for LC
29	V <sub>EE</sub>	-	
30	NC	-	No Connection
31	NC	-	No Connection
<b>CCFL CONNECTOR</b>			
1	V <sub>CFL</sub>	-	Power supply for CCFL
2	NC	-	No Connection
3	NC	-	No Connection
4	V <sub>CFL</sub>	-	CCFL Ground