

Slide Potentiometers for Fader Control of Mixers Low-profile Master Type (Slim Type)

RS N S Series



The thinnest possible body contributes to reduce size, height and weight of the set.

Rotary Potentiometers

Slide Potentiometers



Typical Specifications

Items	Specifications
Total resistance tolerance	± 20%
Maximum operating voltage	200V AC, 10V DC (RS60N Series) 500V AC, 10V DC (RSA0N Series)
Operating force	0.05 to 0.8N
Operating life	30,000cycles
Operating temperature range	- 10 to + 60

General-use

Mixer

Product Line

Number of resistor elements	Travel (mm)	Lever type	Length of lever (mm)	Total resistance (kΩ)	Resistance taper	Terminal style	Minimum packing unit (pcs.)	Products No.	Drawing No.
Single-unit	60	4	20	10	1B	For PC board	100	RS60N11S4003	1
	100	9-T (T-Bar)	8.2					RSA0N11S9002	2

Note

Products other than those listed in above products are also available. Please contact us for details.

Dimensions

Unit:mm

No.	Style	PC board mounting hole dimensions
1	<p>t=1.2</p>	

Refer to P.433 for product varieties.
Refer to P.433 for details of lever types.

Dimensions

Unit:mm

No.	Style	PC board mounting hole dimensions
2		

Rotary Potentiometers

Slide Potentiometers

Product Varieties

General-use

In addition to the recommended products, the following specifications can also be accommodated.

Mixer

Total Resistance Variety

Total resistance(k)	10	50	100	250

Resistance Taper

Resistance taper	15A	1B	10A

Lever Types

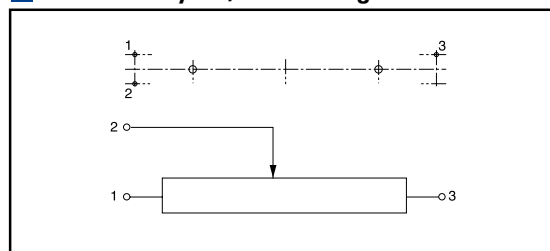
Unit:mm

Configuration code	1	4	9-T (T-Bar)
Dimensions			

Corresponding Specifaion

Dust cover	Available

Terminal Layout/Circuit Diagram



Notes

1. marked are specifications recommended by ALPS.
2. Products other than those listed in the above list are also available. Please contact us for details.

Refer to P.434, 502 for resistance taper.

Orders other than recommended products

When ordering product varieties that are not listed in the Product Line, please specify by referring to the below example.

Sample Part Number

R S 6 0 N 1 1 S - 0 1 - B 1 0 3

Rotary Potentiometers

Slide Potentiometers

Travel

60	60mm
A0	100mm

Number of resistor elements

Single-unit	1
--------------------	---

General-use

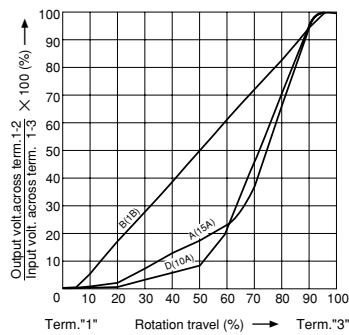
Mixer

Type of operation unit

Code	Configuration code
01	1
04	4
9T	9-T(T-Bar)

Resistance taper






Code	Resistance taper
A	15A
B	1B
D	10A



Total resistance

Code	Total resistance (kΩ)	Code	Total resistance (kΩ)
103	10	104	100
503	50	254	250

List of Varieties

Item	Master type		Low-profile master type				Motor-driven master type				
	RS	K	RS	N1	RS	N11S	RS6011 Y	RSA0K1 V	RS	N1 M	
Photo											
Outlined specifications	Travel (mm)		60 (RS60N11) 100 (RSA0N11) 100 (RSA0K12)		60 (RS60N11) 100 (RSA0N11S) 60 (RS60N12) 100 (RSA0N12)		60 (RS60N11S) 100 (RSA0N11S) 60 (RS6011SY) 60 (RS6011DY)		100 (RSA0K11V) 60 (RS60N11M) 100 (RSA0N11M)		
	Number of resistor elements		Single-unit	Dual-unit	Single-unit	Dual-unit	Single-unit		Dual-unit	Single-unit (CP type)	
Electrical Performance	Total resistance (k)		10, 50, 100, 250				RS N1 : 10, 50, 100, 250 RS N11S : 10, 50, 100, 250 RS6011 Y : 10, 20, 50		RS N1 M : 10, 50, 100, 250 RSA0K1 V : 10		
	Resistance taper		15A, 1B				RS N1 : 15A, 1B, 10A RS N1 S : 15A, 1B, 10A RS6011 Y : 15A, 1B, 10A		Single-unit : 1B Dual-unit : Servo 1B Audio 15A, 1B, 10A		
Mechanical Performance	Operating force		Standard : 0.1 to 0.6N				RS N1 Single-unit : 0.05 to 0.8N Dual-unit : 0.05 to 0.9N RS6011 Y 0.1 to 2.0N RS N11S 0.05 to 0.8N		RS N1 M 0.3 to 1.3N RSA0K1 V, Single-unit : 0.15 to 0.65N		
	Stopper strength		100N								
	Lever push-pull strength		100N				50N				
	Lever deviation (mm) Both Side		$\frac{2(2 \times L)}{25}$								
	Lever deviation		0.5mm max. (One side)								
Soldering	Manual soldering		350 max. 3s max.								
	Dip soldering		260 max. 5s max. RS N1 M (Lead type), RSA0K1 V : not available								
Environmental Performance	Cold		- 30 ± 2 for 96h								
	Dry heat		70 ± 2 for 240h								
	Damp heat		40 ± 2 , 90 to 95%RH for 96h								
Page		424	428	434	435	438					

Rotary Potentiometers

Slide Potentiometers

General-use

Mixer

Slide Volume Control Operations Cautions444, 445

Notes

1. Attenuation is specified for residual resistance.
2. "L" in the "Lever Wobble" column of the above table indicates the length of lever.
3. Products other than those listed in the above list are also available. Please contact us for details.