

4

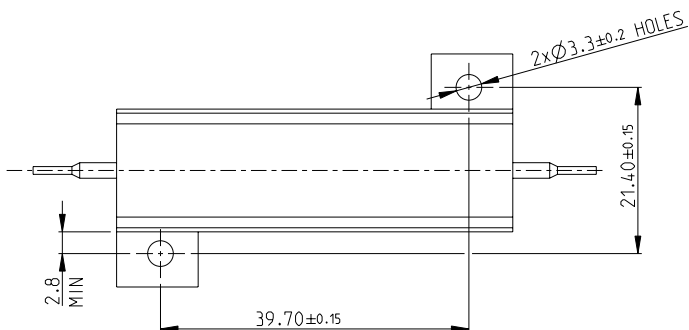
3

2

1

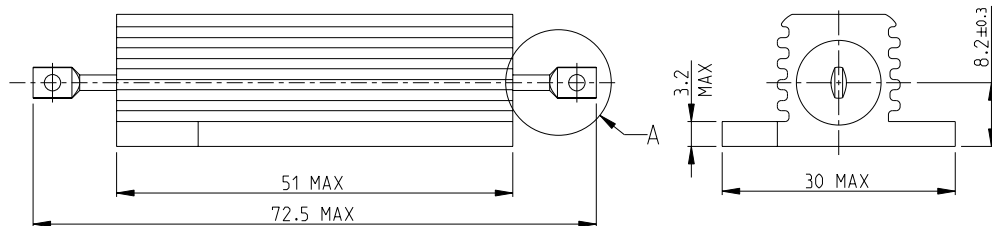
THIS DRAWING IS UNPUBLISHED. RELEASED FOR PUBLICATION SEP. 2005
 © COPYRIGHT 2005 ALL RIGHTS RESERVED.

LOC		DIST		REVISIONS			
P	LTR	DESCRIPTION		DATE	DNW	APVD	
B2		REVISED PER ECO-11-005150		29MAR2011	RK	HMR	

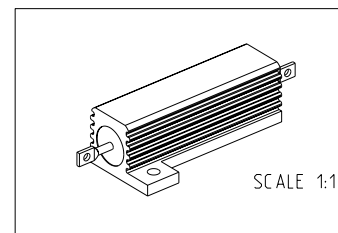


- 1 FOR FURTHER INFORMATION SEE DATA SHEET FOR HS SERIES-ALUMINIUM HOUSED RESISTORS
- 2 FOR A SPECIFIC PN FOR A RESISTANCE VALUE AND TOLERANCE, PLEASE REFER TO DMF
- 3 TECHNICAL SPECIFICATION

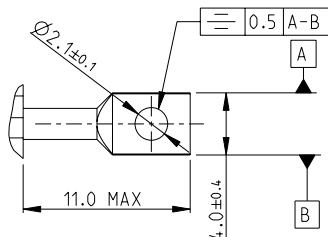
DISSIPATION AT 25°C : 50 WATTS MOUNTED ON STANDARD HEATSINK
 BS OHMIC RANGE : R051 TO 72K
 STABILITY : ΔR < =1% PER 1000Hrs
 ISOLATION VOLTAGE : 2500V DC/AC pk
 MAX WORKING VOLTAGE : 1250V DC/AC rms
 TEMP COEFFICIENT : > 1R0 50ppm
 > 100R 25ppm
 CLIMATIC CATEGORY : 55/200/56



RoHS Compliant



DETAIL A
 SCALE 4:1



THIS DRAWING IS A CONTROLLED DOCUMENT.		OWN	22.SEP.05	TE Connectivity	
		CHK	DAVE KENNEDY	HSA50 WIDE BORE	
		APVD	J CATCHPOLE	SIZE	A3
		APVD	J CATCHPOLE	CAGE CODE	00779
		APVD	J CATCHPOLE	DRAWING NO	C-1625984
DIMENSIONS: mm		TOLERANCES UNLESS OTHERWISE SPECIFIED:		RESTRICTED TO	
		0 PLC ±0.5		-	
		1 PLC ±0.2		-	
		2 PLC ±0.1		-	
		3 PLC ±		-	
		4 PLC ±		-	
MATERIAL		FINISH		SCALE 3:1	
				SHEET 1 OF 1	
				REV B2	

1470-19 (3/11)

Pro/ENGINEER DRAWING