

4

3

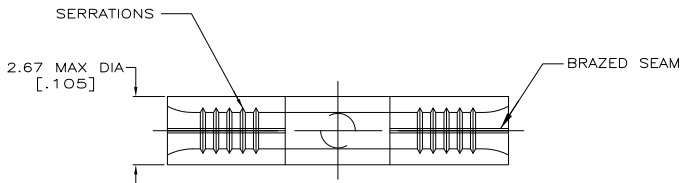
2

1

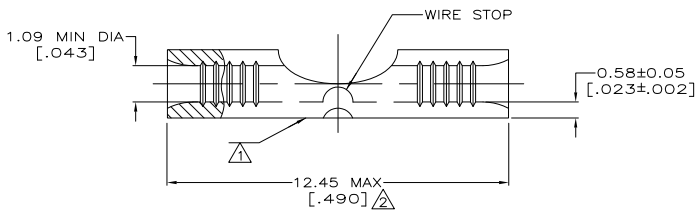
THIS DRAWING IS UNPUBLISHED. RELEASED FOR PUBLICATION  
 © COPYRIGHT BY TYCO ELECTRONICS CORPORATION. ALL RIGHTS RESERVED.

LOC	DIST	REVISIONS		
P	LTR	DESCRIPTION	DATE	BY
G	14	REV PER ECR 09-004073	20FEB09	JR

<b>AMP</b> WIRE RANGE	Listed FILE E13288	LR7189 Certified
24-20 AWG SOLID OR STRANDED	22-20 AWG SOLID OR STRANDED	22-20 AWG SOLID OR STRANDED



- 1 STAMP AMP APPROX AS SHOWN
- 2 MAXIMUM LENGTH DOES NOT INCLUDE MANUFACTURING TABS
- 3 COPPER PER ASTM B-152, ANNEALED
- 4 TIN PLATE 0.00254 [.000100] MIN PER ASTM B-545
- 5 CLEANED, UNPLATED



100	LOOSE PIECE, BOX	4	8-324001-1
--	LOOSE PIECE	5	1-324001-2
---	LOOSE PIECE	4	324001
QTY	PACKAGE TYPE	FINISH	PART NO

<b>AMP INCORPORATED CUSTOMER SERVICE SYSTEMS</b>		MAX RECOMMENDED OPERATING TEMPERATURE: 170°C MAX
FOR ADDITIONAL PRODUCT INFORMATION OR COPIES OF DRAWINGS AND TECHNICAL DOCUMENTS 1-800-522-6752	PRODUCT INFORMATION CENTER 1-800-522-6752	VOLTAGE RATING: N/A
FOR APPLICATION TOOLING INFORMATION 1-800-722-1111	TOOLING ASSISTANCE CENTER 1-800-722-1111	CIRCULAR MIL AREA: 0.16-0.65mm <sup>2</sup> [320-1,290] SOLID OR STRANDED
FOR ORDER ENTRY 1-800-526-5142	THIS DRAWING IS A CONTROLLED DOCUMENT FOR AMP INCORPORATED. IT IS SUBJECT TO CHANGE AND THE CONTROLLING BUSINESS ORGANIZATION SHOULD BE CONTACTED FOR THE LATEST REVISION.	

THIS DRAWING IS A CONTROLLED DOCUMENT.		DATE: 4-13-93	BY: TA BRINKMAN	TYCO ELECTRONICS CORPORATION Harrisburg, Pa 17105-3608
DIMENSIONS: MM (INCHES)		DATE: 4-13-93	CHK: DA PATTERSON	SPlice, BUTT, STRAP, SOLISTRAND
OTHER DIMENSIONS: PLC		DATE: 4-13-93	APP: JIL MECKLEY	
MATERIAL: COPPER		FINISH: SEE TABLE	APPLICATION SPEC: —	SIZE: A2
RESTRICTED TO:		HEIGHT:	QTY: 100	DRAWING NO: 324001
CUSTOMER DRAWING		SCALE: 10:1	SHEET: 1 of 1	REV: G

AMP 1471-9 REV 31MM2000

324001

A