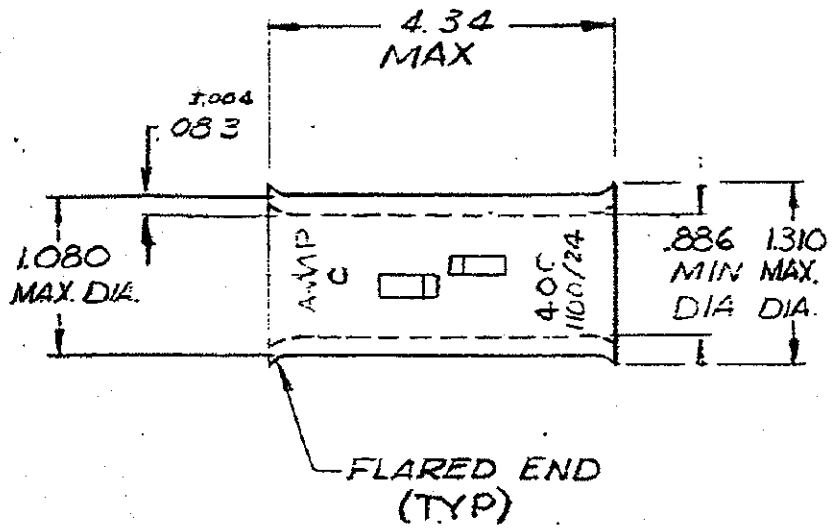


DRAWING MADE IN AMERICAN PROJECTION

LUC PRINT DIST
5: 86

© 1972 BY AMP INCORPORATED
RIGHTS RESERVED. AMP NOT TO BE
COVERED BY PATENTS NOT TO BE
PATENTS UNPUBLISHED NOR PUBLISHED
REPRODUCED WITHOUT PERMISSION
OF AMP INCORPORATED.

REVISIONS			
REV	DESCRIPTION	DATE	APPROVED
0	NPS 71-0920	8/6 2-14-72	JM
A	ADDED RE STAMPING	P-7366 LE 11/17/74	WJW
B	DELETE PER G-2173	ST 5/18/78	PMF
C	REACTIVATE PER G-5057	2/4/89	PMF/WJV
D	REVISED PER Q63A-0637-01	1/10/02	KL



UNLESS OTHERWISE SPECIFIED DIMENSIONS ARE IN INCHES - TOLERANCES ON DECIMALS : .002 ANGLES : 5°	CONTRACT NO. <i>2-14-72</i>	AMP AMP INCORPORATED HARRISBURG, PENNSYLVANIA
	DR. <i>Henry Bader</i>	
MATERIAL ANNEALED COPPER (ASTM-B-75)	CRK. <i>Am Engineering</i>	AMPPOWER-BUTT WIRE SIZE: 400 MCM
FINISH: TIN PLATE (MIL-T-10727)	APPL. <i>Abel 2-14-72</i>	SIZE A D302 IDENT NO. 00779 NUMBER 53088
	REL. <i>Engineering 2-14-72</i>	SCALE NTS SHEET 1 OF 1
	DSGN APPL.	
	OTHER APPD.	