

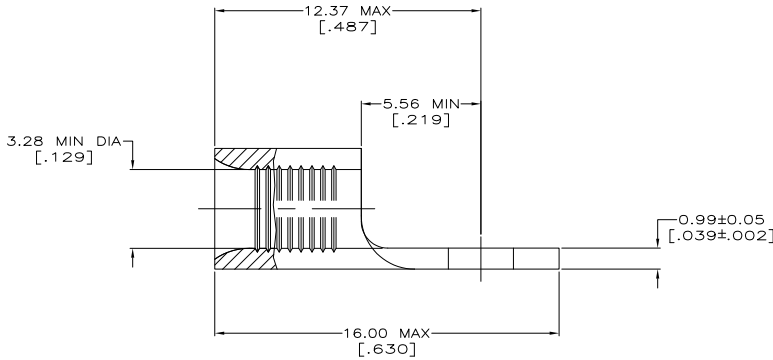
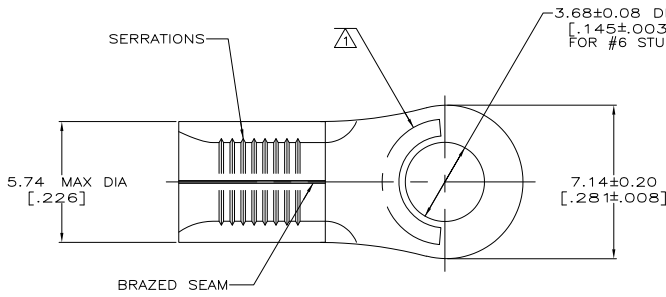
THIS DRAWING IS UNPUBLISHED. RELEASED FOR PUBLICATION. ALL RIGHTS RESERVED.

LOC	REV	DESCRIPTION	DAP	DATE	DRN	APPD
G	14	REVISED PER ECO-11-004820		11MAR11	RK	HMR

**METRIC**  
DIMENSIONS LISTED IN mm [ INCHES ]

<b>AMP</b> WIRE RANGE 12-10 AWG SOLID OR STRANDED	<b>E13288</b> Listed 12-10 AWG STRANDED
<b>LR7189</b> Certified 12-10 AWG SOLID OR STRANDED	MILITARY P/N AND CLASS MS20659-165 CLASS 2 P/N 35476 & 2-35476-1 ONLY

△ STAMP AMP 12-10\* APPROX AS SHOWN



<b>AMP INCORPORATED CUSTOMER SERVICE SYSTEMS</b>		MAX RECOMMENDED OPERATING TEMPERATURE: 170° C MAX
FOR ADDITIONAL PRODUCT INFORMATION OR COPIES OF DRAWINGS AND TECHNICAL DOCUMENTS	PRODUCT INFORMATION CENTER 1-800-522-6752	VOLTAGE RATING: NOT APPLICABLE
FOR APPLICATION TOOLING INFORMATION	TOOLING ASSISTANCE CENTER 1-800-722-1111	WIRE CROSS SECTIONAL AREA RANGE: 2.62-6.64mm <sup>2</sup> [5,180-13,100] CIR MILS SOLID OR STRANDED
FOR ORDER ENTRY	1-800-526-5142	THIS DRAWING IS A CONTROLLED DOCUMENT FOR AMP INCORPORATED. IT IS SUBJECT TO CHANGE AND THE CONTROLLING ENGINEERING ORGANIZATION SHOULD BE CONTACTED FOR THE LATEST REVISION.

50	LOOSE PIECE, BOX	8-35476-2
2000	ON TAPE	2-35476-1
---	LOOSE PIECE	35476
QUANTITY	PACKAGING TYPE	PART NO

THIS DRAWING IS A CONTROLLED DOCUMENT.		BY TA BRINKMAN 3-17-93	DATE 3-17-93	<b>TE</b> TE Connectivity
DIMENSIONS: TO DIMENSIONS UNLESS OTHERWISE SPECIFIED:		CHK DA PATTERSON 3-17-93	DATE 3-17-93	
0 P/C	---	APPROVED BY DE MILLER 3-17-93	DATE 3-17-93	PRODUCT SPEC
1 P/C	---	APPLICATION SPEC	---	TERMINAL, RING TONGUE, SOLISTRAND™
2 P/C	---	SIZE	---	---
3 P/C	---	WEIGHT	---	---
4 P/C	---	SIZE	---	---
5 P/C	---	WEIGHT	---	---
6 P/C	---	SIZE	---	---
7 P/C	---	WEIGHT	---	---
8 P/C	---	SIZE	---	---
9 P/C	---	WEIGHT	---	---
10 P/C	---	SIZE	---	---
11 P/C	---	WEIGHT	---	---
12 P/C	---	SIZE	---	---
13 P/C	---	WEIGHT	---	---
14 P/C	---	SIZE	---	---
15 P/C	---	WEIGHT	---	---
16 P/C	---	SIZE	---	---
17 P/C	---	WEIGHT	---	---
18 P/C	---	SIZE	---	---
19 P/C	---	WEIGHT	---	---
20 P/C	---	SIZE	---	---
21 P/C	---	WEIGHT	---	---
22 P/C	---	SIZE	---	---
23 P/C	---	WEIGHT	---	---
24 P/C	---	SIZE	---	---
25 P/C	---	WEIGHT	---	---
26 P/C	---	SIZE	---	---
27 P/C	---	WEIGHT	---	---
28 P/C	---	SIZE	---	---
29 P/C	---	WEIGHT	---	---
30 P/C	---	SIZE	---	---
31 P/C	---	WEIGHT	---	---
32 P/C	---	SIZE	---	---
33 P/C	---	WEIGHT	---	---
34 P/C	---	SIZE	---	---
35 P/C	---	WEIGHT	---	---
36 P/C	---	SIZE	---	---
37 P/C	---	WEIGHT	---	---
38 P/C	---	SIZE	---	---
39 P/C	---	WEIGHT	---	---
40 P/C	---	SIZE	---	---
41 P/C	---	WEIGHT	---	---
42 P/C	---	SIZE	---	---
43 P/C	---	WEIGHT	---	---
44 P/C	---	SIZE	---	---
45 P/C	---	WEIGHT	---	---
46 P/C	---	SIZE	---	---
47 P/C	---	WEIGHT	---	---
48 P/C	---	SIZE	---	---
49 P/C	---	WEIGHT	---	---
50 P/C	---	SIZE	---	---

1471-9 (5/11)

35476

A