

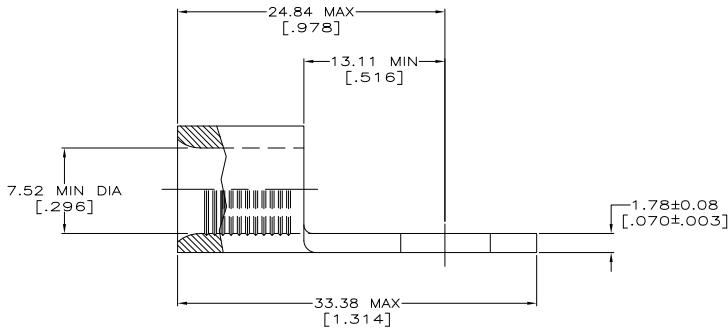
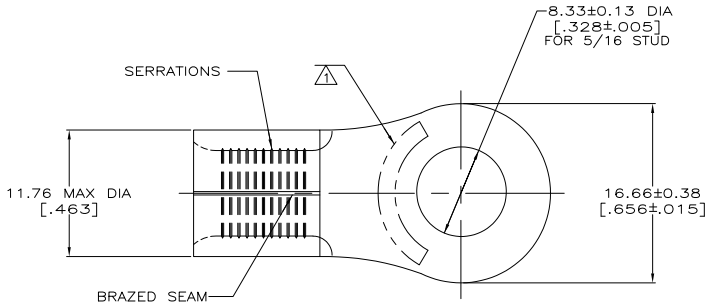
THE DRAWING IS UNPUBLISHED.  
 RELEASED FOR PUBLICATION  
 ALL RIGHTS RESERVED.

LOC	REV	DESCRIPTION	DATE	BY	APP
G	14	H2	REVISED PER ECO-12-000824	16JAN12	KH DR



<b>AMP</b> WIRE RANGE	E13288 Listed
4 AWG SOLID OR STRANDED	4 AWG STRANDED
LR7189 Certified	MILITARY P/N AND CLASS
4 AWG SOLID OR STRANDED	NOT APPLICABLE

STAMP AMP 4\* APPROX AS SHOWN



<b>AMP INCORPORATED CUSTOMER SERVICE SYSTEMS</b>		MAX RECOMMENDED OPERATING TEMPERATURE: 170° C MAX
FOR ADDITIONAL PRODUCT INFORMATION OR COPIES OF DRAWINGS AND TECHNICAL DOCUMENTS	PRODUCT INFORMATION CENTER 1-800-522-6752	VOLTAGE RATING: NOT APPLICABLE
FOR APPLICATION TOOLING INFORMATION	TOOLING ASSISTANCE CENTER 1-800-722-1111	WIRE CROSS SECTIONAL AREA RANGE: 16.8-26.7mm <sup>2</sup> [33,100-52,600] CIR MILS SOLID OR STRANDED
FOR ORDER ENTRY	1-800-526-5142	THIS DRAWING IS A CONTROLLED DOCUMENT FOR AMP INCORPORATED. IT IS SUBJECT TO CHANGE AND THE CONTROLLING ENGINEERING ORGANIZATION SHOULD BE CONTACTED FOR THE LATEST REVISION.

SUPERCEDED BY 8-33470-2	25	LOOSE PIECE, BAG	8-33470-5
	50	LOOSE PIECE, BOX	8-33470-2
	500	ON TAPE, REEL	2-33470-2
	500	LOOSE PIECE, BOX	33470-1
	-	LOOSE PIECE	33470
QUANTITY	PACKAGING TYPE	PART NO	

THIS DRAWING IS A CONTROLLED DOCUMENT.		BY TA BRINKMAN 3-29-93	TE Connectivity	
DIMENSIONS: mm [INCHES]		CHK DA PATTERSON 3-29-93	TERM DE MILLER 3-29-93	
TOLERANCES UNLESS OTHERWISE SPECIFIED: Ø P/UC ± .08 P/UC ± .08 H P/UC ± .08 H P/UC ± .08 ANGLES ± .08		PRODUCT SPEC	TERMINAL, RING TONGUE, SOLISTRAND™	
MATERIAL COPPER PER ASTM B-152 ANNEALED	FINISH TIN PLATE 0.0025±0.00150MIN THK PER MIL-1-10727	APPLICATION SPEC	SIZE A2	QTY 00779
CUSTOMER DRAWING		WEIGHT	DRAWING NO 33470	RESTRICTED TO H2
SCALE 4:1		SHEET 1 of 1		REV H2