

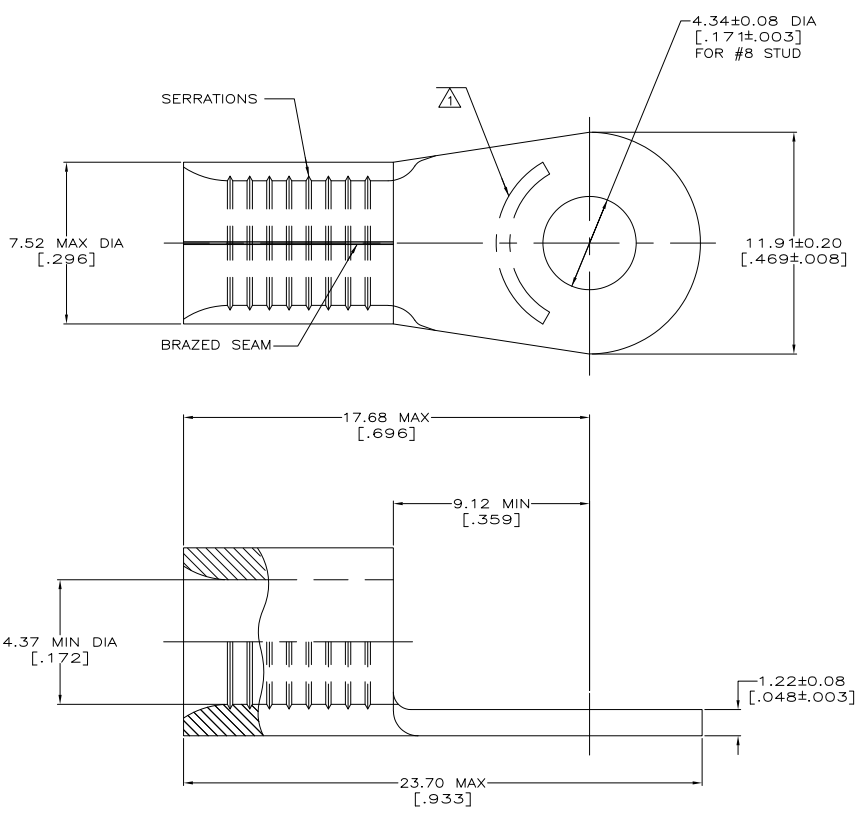
THIS DRAWING IS UNPUBLISHED. RELEASED FOR PUBLICATION. ALL RIGHTS RESERVED.

LOC	QTY	REV	DESCRIPTION	DATE	BY	APP
G	14	P	LR			
		D1	REVISED PER ECO-11-004820	11MAR11	RK	HMR

**METRIC**  
DIMENSIONS LISTED IN mm [ INCHES ]

<b>AMP</b> WIRE RANGE	Listed
8 AWG SOLID OR STRANDED	8 AWG STRANDED
<b>LR7189</b> Certified	MILITARY P/N AND CLASS
8 AWG SOLID OR STRANDED	NOT APPLICABLE

△ STAMP AMP 8\* APPROX AS SHOWN



<b>AMP INCORPORATED CUSTOMER SERVICE SYSTEMS</b>		<b>MAX RECOMMENDED OPERATING TEMPERATURE:</b> 170° C MAX
FOR ADDITIONAL PRODUCT INFORMATION OR COPIES OF DRAWINGS AND TECHNICAL DOCUMENTS	PRODUCT INFORMATION CENTER 1-800-522-6752	VOLTAGE RATING: NOT APPLICABLE
FOR APPLICATION TOOLING INFORMATION	TOOLING ASSISTANCE CENTER 1-800-722-1111	WIRE CROSS SECTIONAL AREA RANGE: 6.64-10.5MM <sup>2</sup> [13,100-20,800] CIR MILS SOLID OR STRANDED
FOR ORDER ENTRY	1-800-526-5142	

100	LOOSE PIECE, BOX	8-32996-1
1000	ON TAPE, REEL	32996-1
--	LOOSE PIECE	32996
QUANTITY	PACKAGE TYPE	PART NUMBER

THIS DRAWING IS A CONTROLLED DOCUMENT.		BY TA BRINKMAN 3-24-93	<b>TE</b> TE Connectivity
DRAWN DA PATTERSON 3-24-93		CHK DE MILLER 3-24-93	
DIMENSIONS: mm [INCHES]	TOLERANCES UNLESS OTHERWISE SPECIFIED:	PRODUCT SPEC	TERMINAL, RING TONGUE, SOLISTRAND™
Ø P/LC ± .01	1 P/LC ± .01	APPLICATION SPEC	SIZE A2
1 P/LC ± .01	2 P/LC ± .01	WEIGHT	CAGE CODE 00779
Ø P/LC ± .01	4 P/LC ± .01	ANGLE	DRAWING NO 32996
MATERIAL COPPER PER ASTM B-152 ANNEALED	FINISH TIN PLATE 0.025±0.001003 MM THICK PER MIL-1-10757	CUSTOMER DRAWING	RESTRICTED TO —
			SCALE 8:1
			SHEET 1 of 1
			REV D1

1471-9 (5/11)