

4

3

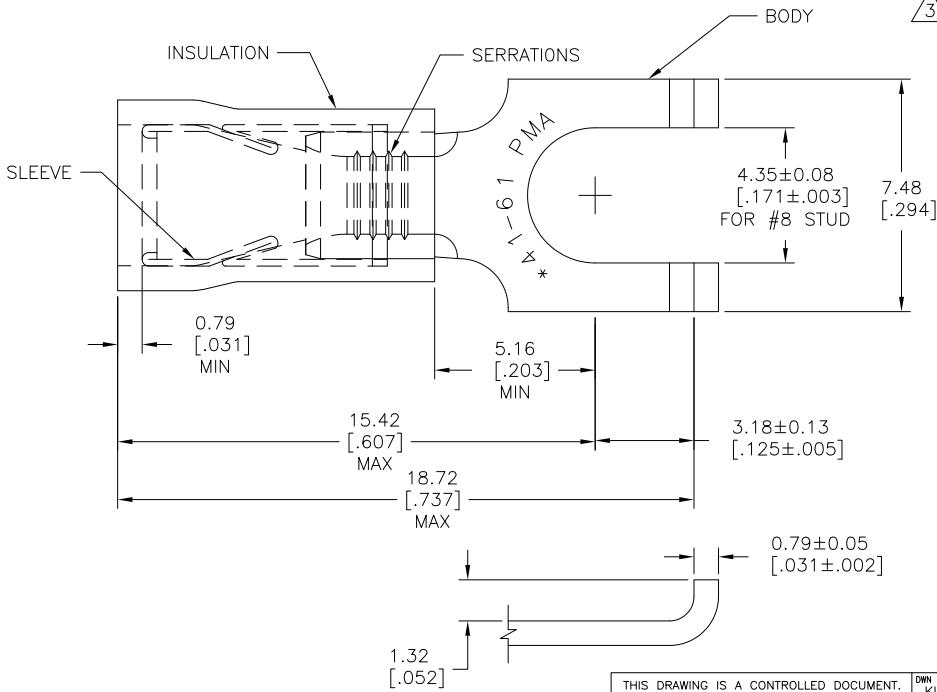
2

1

THIS DRAWING IS UNPUBLISHED. RELEASED FOR PUBLICATION
 © COPYRIGHT - By - ALL RIGHTS RESERVED.

LOC		DIST		REVISIONS			
P	LTR	DESCRIPTION		DATE	DWN	APVD	
	J2	REVISED PER ECO-12-002690		13FEB12	KH	DR	

- 1 WIRE INSULATION DIA .115-.170
- △2 BODY FINISH: TIN PLATE 0.00254[.000100] MIN THK PER ASTM B545
- △3 MATERIAL:
 BODY&SLEEVE: COPPER PER ASTM B152
 INSULATION: NYLON, COLOR:BLUE



100	LOOSE PIECE, BOX	8-320862-1
5000	ON TAPE, REEL	2-320862-1
-	LOOSE PIECE	320862
QTY	DESCRIPTION	PART NO

THIS DRAWING IS A CONTROLLED DOCUMENT.

DIMENSIONS: mm [INCHES]	TOLERANCES UNLESS OTHERWISE SPECIFIED:	DWN KIRAN HOLAL 13FEB12	TE Connectivity	
0 PLC ± -	1 PLC ± -	CHK ROHDE DANIEL 13FEB12		
1 PLC ± -	2 PLC ± -	APVD ROHDE DANIEL 13FEB12		
2 PLC ± -	3 PLC ± 0.20[.008]	NAME	TERMINAL, P.I.D.G., FLANGED SPADE, WIRE SIZE: 16-14	
3 PLC ± -	4 PLC ± -	PRODUCT SPEC	-	
4 PLC ± -	ANGLES ± -	APPLICATION SPEC	-	
MATERIAL	FINISH	WEIGHT	SIZE	RESTRICTED TO
△3	△2	-	A3	-
CUSTOMER DRAWING		CAGE CODE	DRAWING NO	
		00779	320862	
		SCALE	SHEET	REV
		8:1	1 of 1	J2