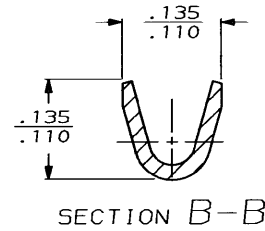
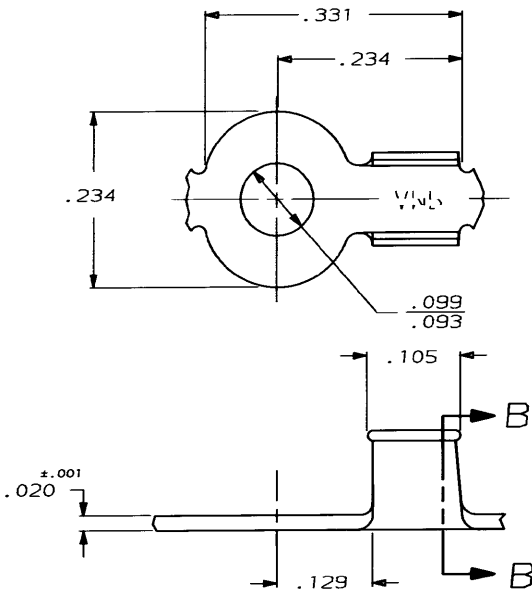


DRAWING MADE IN THIRD ANGLE PROJECTION

THIS DRAWING IS UNPUBLISHED. RELEASED FOR PUBLICATION
 © COPYRIGHT 19 BY AMP INCORPORATED, HARRISBURG, PA. ALL INTERNATIONAL RIGHTS RESERVED. AMP PRODUCTS MAY BE COVERED BY U.S. AND FOREIGN PATENTS AND/OR PATENTS PENDING.

LOC	DIST	REVISIONS				DATE	APPROVED	
AF	50	P	F	ZONE	LTR	DESCRIPTION	DATE	APPROVED
					B	REV PER AF-6785	7/5/90	PF GY



UNLESS OTHERWISE SPECIFIED DIMENSIONS ARE IN INCHES		DR	JR.R.	1/7/87	20-16	63457-1
2 PL DEC ± -	3 PL DEC ± .010	CHK	G. YETTER	1/12/87	WIRE RANGE	PART NO
ANGLES ± -		APPD	R. ERANTZ	1/12/87	AMP INCORPORATED Harrisburg, Pa. 17105	
MATERIAL	#2H BRASS	APPD	T. SHUTTER	1/12/87	NAME TERMINAL, RING	
FINISH	TIN	PRODUCT SPEC			SIZE	FSCM NO
		APPLICATION SPEC			B	00779
		WEIGHT			SCALE	DRAWING NO
					NTS	63457
						SHEET
						1 OF 1

AMP 1470-15 REV 10-84

05 JUL 1980 13:14:54 AMP17795 4551284-4EP12724-006272646 RES

CUSTOMER DRAWING