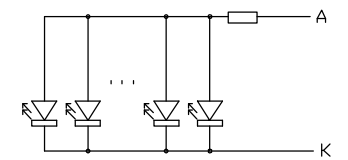
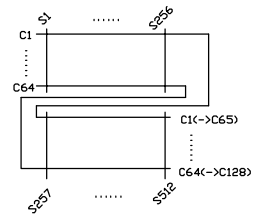


Terminal	
No.	Pin Name
1	VDD
2	VSS
3	VEE
4	CL1(LP)
5	DF
6	DISP/OFF
7	NC
8	I068(YD)
9	CL2(XCK)
10	NC
11	D0
12	D1
13	D2
14	D3
15	LEDA
16	LEDK

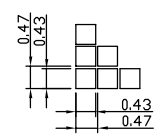


Backlight Circuit
Scale=free

- Note:
- *1. LCD Display Type : STN-Y/G, Positive, Transflective
 - *2. Viewing Direction : 6H
 - *3. Duty : 1/65; Bias : 1/9; Vop : 13.8V
 - *4. Operating Voltage : 5.0V
 - *5. Operating Temperature : -10°C~60°C
 - *6. Storage Temperature : -20°C~70°C
 - *7. Control/Drive IC : NT7086
 - *8. Backlight : Y/G LED(5.0V)



Panel Wiring Details
Scale=free



Pixels Details

TS DISPLAY

Dwg Title		TSM256128	
Dwg No.	HT090619	Date	2009-06-20
Scale	3/2	Unit	mm
Tol.	±0.2		
Drawn	Andyi	Checked	Approved