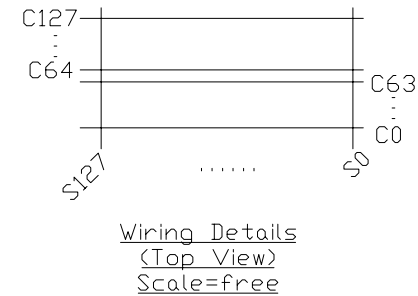
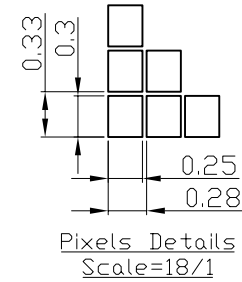
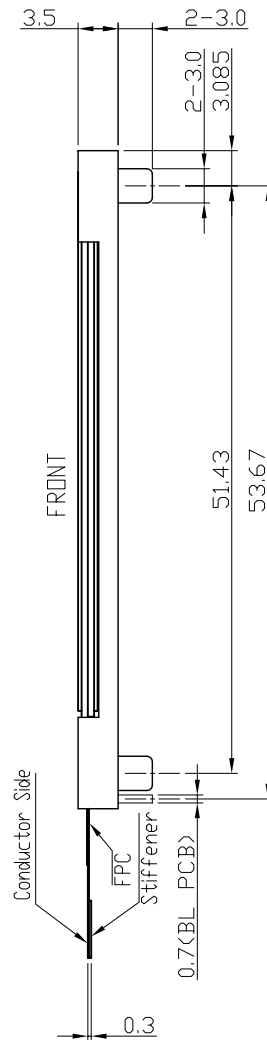


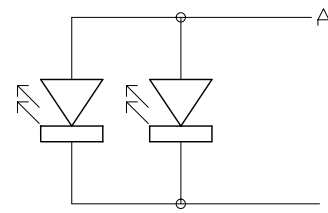
Note:

- *1. LCD Display Type : FSTN, Positive, Transflective
- *2. Viewing Direction : 6H
- *3. Duty : 1/128; Bias : 1/12
- *4. Operating Voltage : 3.0V, V_{lcd} = 15.0V
- *5. Operating Temperature : -20°C~70°C
- *6. Storage Temperature : -30°C~80°C
- *7. Control/Drive IC : SSD1848



Terminal	
No.	Pin Name
1	PS0
2	PS1
3	CSB
4	RESETB
5	RS
6	WR
7	RD
8	DB0
9	DB1
10	DB2
11	DB3
12	DB4
13	DB5
14	DB6
15	DB7
16	VDD
17	VSS
18	V _{OUT}
19	V5+(C4+)
20	V3+(C4-)
21	C1-(C3+)
22	C1+(C3-)
23	C2+
24	C2-
25	C4+(NC)
26	V4(C1+)
27	V3(C1-)
28	V2(NC)
29	V1(NC)
30	V0(NC)
31	DSC1(NC)

说明：括号内的为SSD1848 电路名称



Backlight Circuit
Scale=free

<h1>TS DISPLAY</h1>			
Dwg Title		TSG128128Z+BL	
Dwg No.		Date	
1004161813		2010-04-20	
Scale	Unit	Tol.	
	mm	±0.5	
Drawn		Checked	Approved
Andyi			