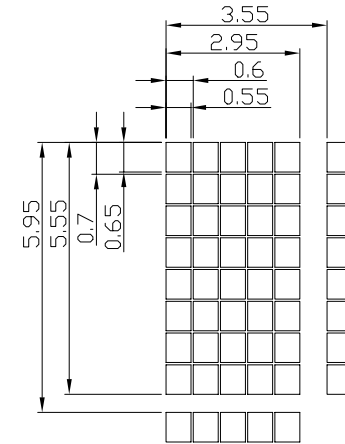
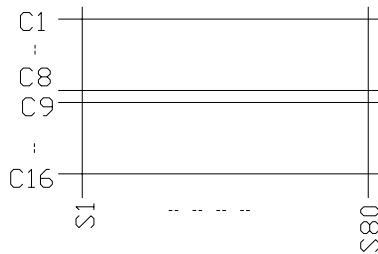


Terminal	
No.	Pin Name
1	VSS
2	VDD
3	NC
4	RS
5	R/W
6	E
7	DB0
8	DB1
9	DB2
10	DB3
11	DB4
12	DB5
13	DB6
14	DB7
15	BLA
16	BLK

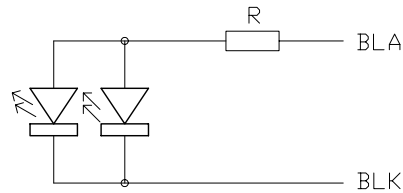
Component Height



Pixels Details
Scale=6/1



Panel Wiring Details
Scale=free



Backlight Circuit
Scale=free

Note:

- *1. LCD Display Type : STN-Gray, Positive, Transflective
- *2. Viewing Direction : 6H
- *3. Duty : 1/16; Bias : 1/5
- *4. Operating Voltage : 3.3V
- *5. Operating Temperature : 0°C~50°C
- *6. Storage Temperature : -10°C~60°C
- *7. An external VR(5k) must be connected for Contrast Control.

TS DISPLAY

Dwg Title			
TSM1602-18 Outline			
Dwg No.		Date	
060148		2007-08-08	
Scale	Unit	Tol.	
3/2	mm	±0.5	
Drawn	Checked	Approved	
JACK			