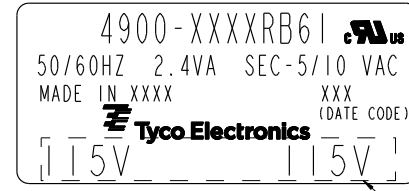
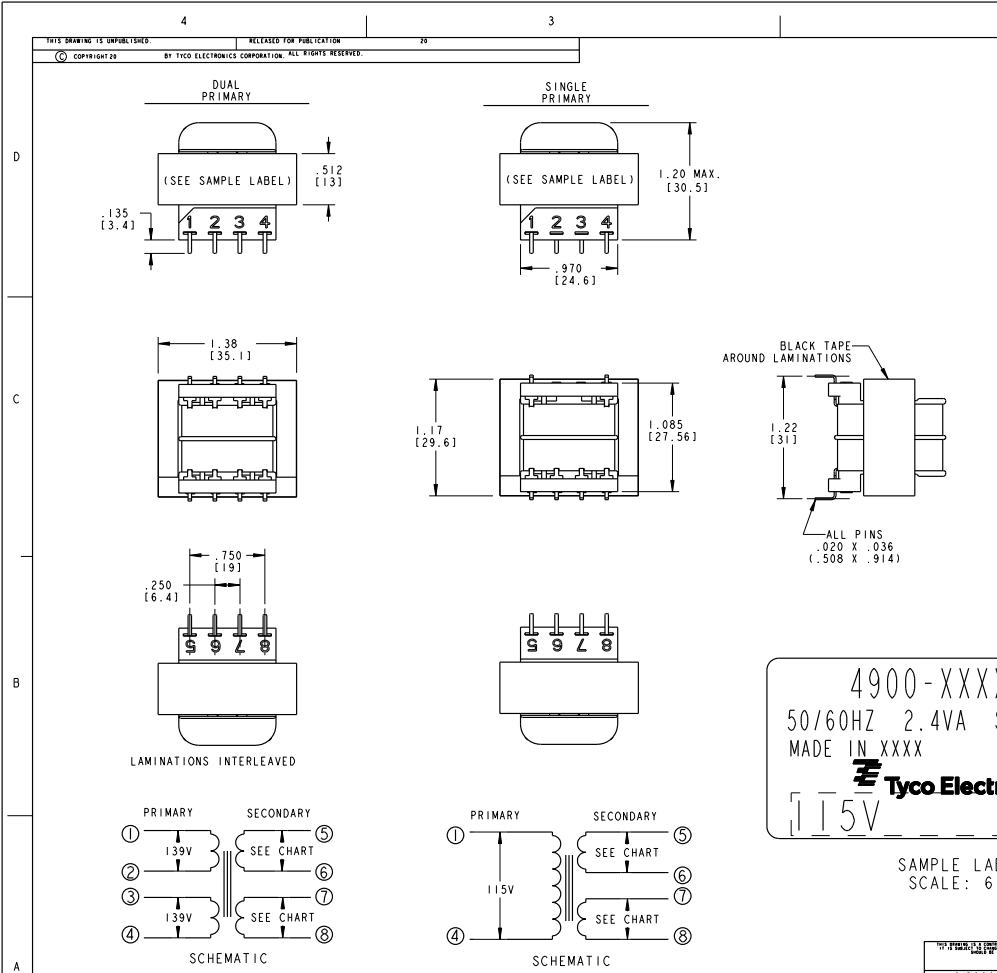


THIS DRAWING IS UNPUBLISHED. RELEASED FOR PUBLICATION BY TYCO ELECTRONICS CORPORATION. ALL RIGHTS RESERVED. COPYRIGHT 20

REVISONS		DATE	BY	APP'D
G	ECR-09-004948	11MAR2009	JS	JH
H	ECR-09-011177	08JUN2009	JS	JH
J	ECR-10-013382	26JUN2010	JS	DB

PRIMARY	SECONDARY	P. U.	TYCO ELECTRONICS PART NUMBER
115 VAC	10 VCT 5 VAC	4900-8010RB61	2-1672209-4
115 VAC	12.6 VCT 6.3 VAC	4900-8013RB61	2-1672209-6
115 VAC	16 VCT 8 VAC	4900-8016RB61	2-1672209-7
115 VAC	20 VCT 10 VAC	4900-8020RB61	2-1672209-8
115 VAC	24 VCT 12 VAC	4900-8024RB61	2-1672209-9
115 VAC	120 VCT 60 VAC	4900-8120RB61	3-1672209-5
115/230 VAC	10 VCT 5 VAC	4900-9010RB61	1-1672209-0
115/230 VAC	12.6 VCT 6.3 VAC	4900-9013RB61	1-1672209-1
115/230 VAC	16 VCT 8 VAC	4900-9016RB61	1672209-9
115/230 VAC	20 VCT 10 VAC	4900-9020RB61	1-1672209-6
115/230 VAC	24 VCT 12 VAC	4900-9024RB61	1-1672209-7
115/230 VAC	120 VCT 60 VAC	4900-9120RB61	2-1672209-3

CERTIFICATION:	HZ.	V. A.
UL/CUL FILE NO. E102980	50/60	2.4



SAMPLE LABEL SCALE: 6:1 VOLTAGE ON LABEL WILL VARY PER MODEL NUMBER

DIMENSIONS: INCHES [mm]		DATE: 17AUG2007	Tyco Electronics Harrisburg, PA 17105-3608	
MATERIAL: FINISH:		DESIGNER: S. SLIKE (7AUG2007)	NAME: TRANSFORMER OUTLINE	
APPROVED: D. HAGGARD (7AUG2007)		PRODUCT SPEC:	RESTRICTED TO:	
APPLICATION SPEC:		SIZE: A2	CASE CODE: 00779	DRAWING NO: 4900-RB61
CUSTOMER DRAWING		SCALE: 3:2		SHEET 1 OF 1 REV J

AMP 1471-B REV 31MAR2000