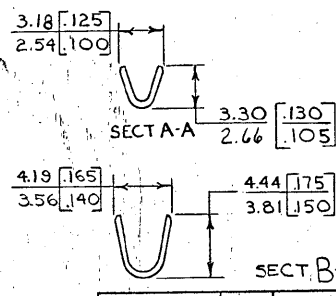
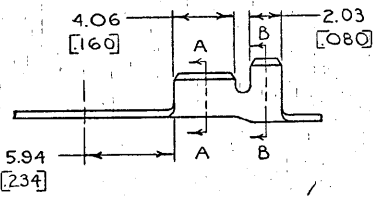
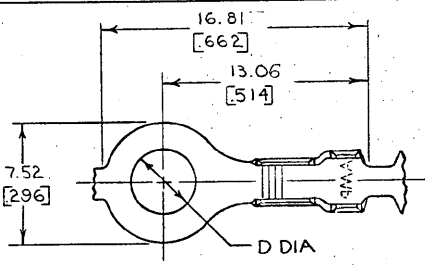


© COPYRIGHT 1968 BY AMP INCORPORATED, HARRISBURG, PA. ALL INTERNATIONAL RIGHTS RESERVED. AMP INCORPORATED PRODUCTS COVERED BY U. S. AND FOREIGN PATENTS AND/OR PATENTS PENDING.



REVISIONS					
P	F	ZONE	LTR	DESCRIPTION	DATE APPROVED
✓	✓		G	REDRAWN & REVISED A-3943	4-11-78 DJP
✓	✓		H	OBSOLETE 42036-3, 4, 5 A-3874	6-29-78 SS
✓	✓		J	REVISED PER A-6100	7/25/78 SS/GY
✓	✓		K	OBSOLETE 42036-0 AF-3702	5/16/78 TMS/64
✓	✓		L	REV PER 0459-94	8/14/78 PWF/64

- 1. CONTINUOUS STRIP ON REELS
- 2. DIMENSIONS IN BRACKETS ARE IN INCHES.

METRIC

INSULATION RANGE	WIRE RANGE	STUD SIZE	D	FINISH	MATERIAL	PART NO
2.03 - 2.79 [080 - 110]	0.3mm [10mm] [22-18]	#10	5.00 [197]			-5
		M4-#8	4.34 [171]			-4
		M3.5-#6	3.68 [145]	NONE	0.51 [020] COPPER	-3
		#10	5.00 [197]			-2
		M4-#8	4.34 [171]			-1
		M3.5-#6	3.68 [145]	NONE	0.51 [020] BRASS	42036-0

UNLESS OTHERWISE SPECIFIED DIMENSIONS ARE IN INCHES. TOLERANCES ON DECIMALS ±0.03 [015] ANGLES ± 1° 0'

CONTRACT NO. DR D.FABIAN 9-11-78

CHK G YETTEE 5-5-78

APPD R Kudva 5-16-78

APPD R Frank 5/16/78

DSGN APPD R Frank 5/16/78

OTHER APPD

AMP INCORPORATED Harrisburg, Pa.

NAME RING

SIZE B CODE IDENT NO 00779 DRAWING NO 42036

SCALE SHEET

CUSTOMER DRAWING