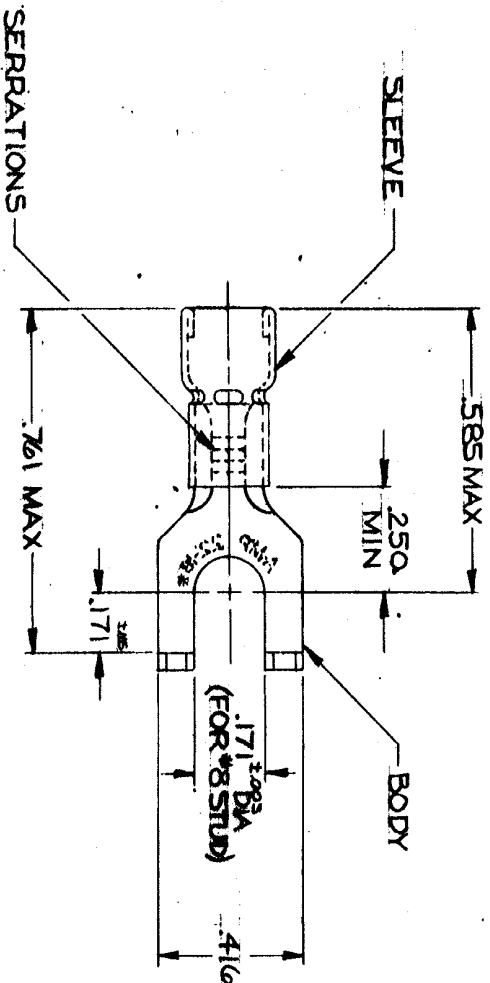


AMP INCORPORATED, ALL RIGHTS RESERVED. THIS DRAWING IS THE PROPERTY OF AMP INCORPORATED. IT IS TO BE USED ONLY FOR THE PURPOSES SPECIFIED HEREON.



FOR WIRE INSULATION DIA (SEE TABLE)  
 MARKING 22-18 FOR MILITARY  
 COMMERCIAL RANGE 22-16

REV	DATE	APPROVED
A	3/21/67	RHW
B	5-7-71	RCY
C	8-8-76	AS
D	11-25-81	DDT / AEM
E	12-2-82	Per G.M.
F	11/90	DKS / JSC

TABLE I

1	WIRE TERMINAL	SEE TABLE I	SLEEVE & BODY: COPPER (99-C-576)
QTY	DESCRIPTION	PART NO.	MATERIAL & FINISH

UNLESS OTHERWISE SPECIFIED, DIMENSIONS ARE IN INCHES. TOLERANCES ON DIMENSIONS ARE: .005 ANGLES ±.5°

OTHER TREAT: ANNEALED  
 FINISH: SEE TABLE I

CONTRACT NO. H-3121/67  
 DR. [Signature]  
 DATE: 3/21/67

AMP INCORPORATED  
 HARRISBURG, PENNSYLVANIA

WIRE TERMINAL  
 DIAMOND GRIP-FLANGED SPADE  
 WIRE SIZE: 22-16

SCALE: 4:1  
 WT. CALC. ACTUAL: 32495  
 NUMBER: 1 OF 1

TABLE II

.115 MAX	2-32495-2	OBsolete
.080 - .125	2-32495-3	OBsolete
INSUL. DIA.	PART NO. ON TAPE	OBsolete

AMP INCORPORATED  
 G41

CUSTOMER DRAWING