

4

3

2

1

THIS DRAWING IS UNPUBLISHED.

RELEASED FOR PUBLICATION MAR.2003

© COPYRIGHT 2003 BY -

ALL RIGHTS RESERVED.

LOC E DIST B

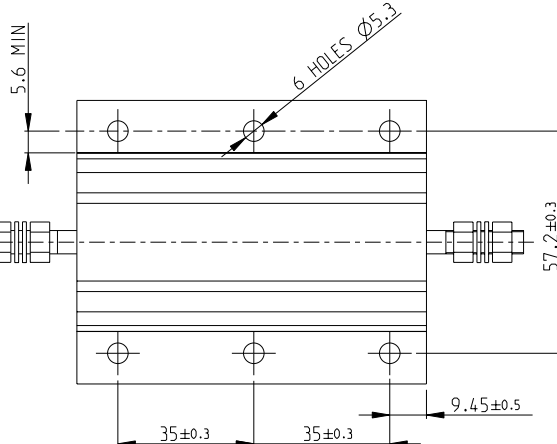
REVISIONS

P	LTR	DESCRIPTION	DATE	DNW	APVD
B2		REVISED PER ECO-11-005150	29MAR2011	RK	HMR

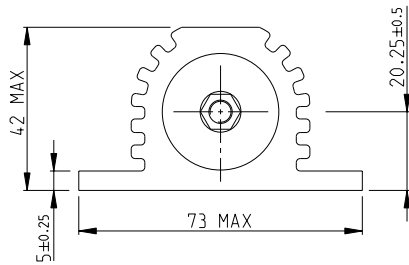
1 FOR FURTHER INFORMATION SEE DATA SHEET FOR HS SERIES-ALUMINIUM HOUSED RESISTORS

2 FOR A SPECIFIC PN FOR A RESISTANCE VALUE AND TOLERANCE, PLEASE REFER TO DMF

M6 ST/STEEL TERMINAL STUDS.
EACH SUPPLIED WITH:-
2 OFF M6 ST/STEEL FULL NUTS
2 OFF M6/STEEL PLAN WASHERS

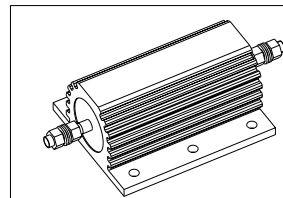


GOLD ANODISED ALUMINIUM HOUSINGS



HSC200 ALUMINIUM HOUSED POWER RESISTOR

RoHS Compliant



THIS DRAWING IS A CONTROLLED DOCUMENT.

OWN LUONG 10.MAR.03

CHK J CATCHPOLE 10.MAR.03

APVD J CATCHPOLE 10.MAR.03

STE TE Connectivity

DIMENSIONS:	TOLERANCES UNLESS OTHERWISE SPECIFIED:
mm	0 PLC ±0.5
	1 PLC ±0.2
	2 PLC ±0.1
	3 PLC ±
	4 PLC ±
	ANGLES ±
	FINISH 5°

PRODUCT SPEC	APPLICATION SPEC	WEIGHT	RESTRICTED TO
-	-	-	-

NAME	SIZE	CAGE CODE	DRAWING NO	RESTRICTED TO
HSC200 ALUMINIUM HOUSED POWER RESISTOR	A3	00779	C-1630019	-

CUSTOMER DRAWING SCALE 1:1 SHEET 1 OF 1 REV B2

1470-19 (3/11)

Pro/ENGINEER DRAWING