

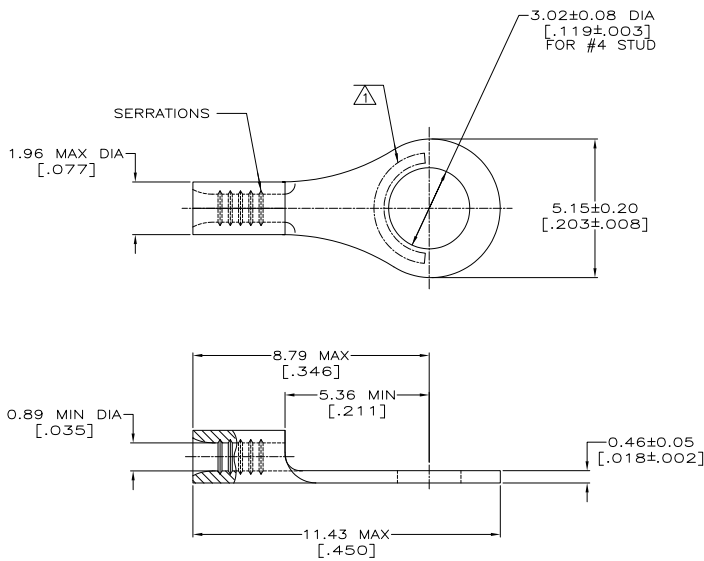
THE DRAWING IS UNPUBLISHED. RELEASED FOR PUBLICATION. ALL RIGHTS RESERVED.

LOC	REV	DESCRIPTION	DATE	BY	APPD
G	14				
	D2	REVISED PER ECO-11-010839	25MAY11	RK	HMR

METRIC
DIMENSIONS LISTED IN mm [INCHES]

AMP WIRE RANGE	E13288 Listed
26-22 AWG STRANDED	NOT LISTED
LR7189 Certified	MILITARY P/N AND CLASS
NOT CERTIFIED	NOT APPLICABLE

STAMP AMP APPROX AS SHOWN
 CLEANED, UNPLATED



AMP INCORPORATED CUSTOMER SERVICE SYSTEMS		MAX RECOMMENDED OPERATING TEMPERATURE: 170° C MAX
FOR ADDITIONAL PRODUCT INFORMATION OR COPIES OF DRAWINGS AND TECHNICAL DOCUMENTS	PRODUCT INFORMATION CENTER 1-800-522-6752	VOLTAGE RATING: NOT APPLICABLE
FOR APPLICATION TOOLING INFORMATION	TOOLING ASSISTANCE CENTER 1-800-722-1111	WIRE CROSS SECTIONAL AREA RANGE: 0.1-0.41mm ² [202-810] CIR MILS STRANDED
FOR ORDER ENTRY	1-800-526-5142	

-			31428-1
0.00254 [0.000100] MIN TIN PER ASTM B-545			31428
FINISH			PART NO
THIS DRAWING IS A CONTROLLED DOCUMENT.		BY TA BRINKMAN 2-2-93	TE TE Connectivity
DRAWING APPROVED BY DA PATTERSON 2-2-93		DATE 2-2-93	
DIMENSIONS: mm [INCHES]		APPROVED BY DE MILLER 2-2-93	PRODUCT SPEC
TOLERANCES UNLESS OTHERWISE SPECIFIED:			APPLICATION SPEC
0.100 ± .005			WEIGHT
0.250 ± .010			SIZE
0.500 ± .020			CAGE CODE
0.750 ± .030			DRAWING NO
1.000 ± .040			RESTRICTED TO
MATERIAL: COPPER PER ASTM B-152 ANNEALED			A200779 ©=31428
FINISH: -			CUSTOMER DRAWING
			SCALE: 10:1
			SHEET 1 of 1
			REV D2

1471-9 (5/11)

31428