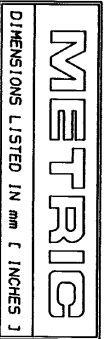


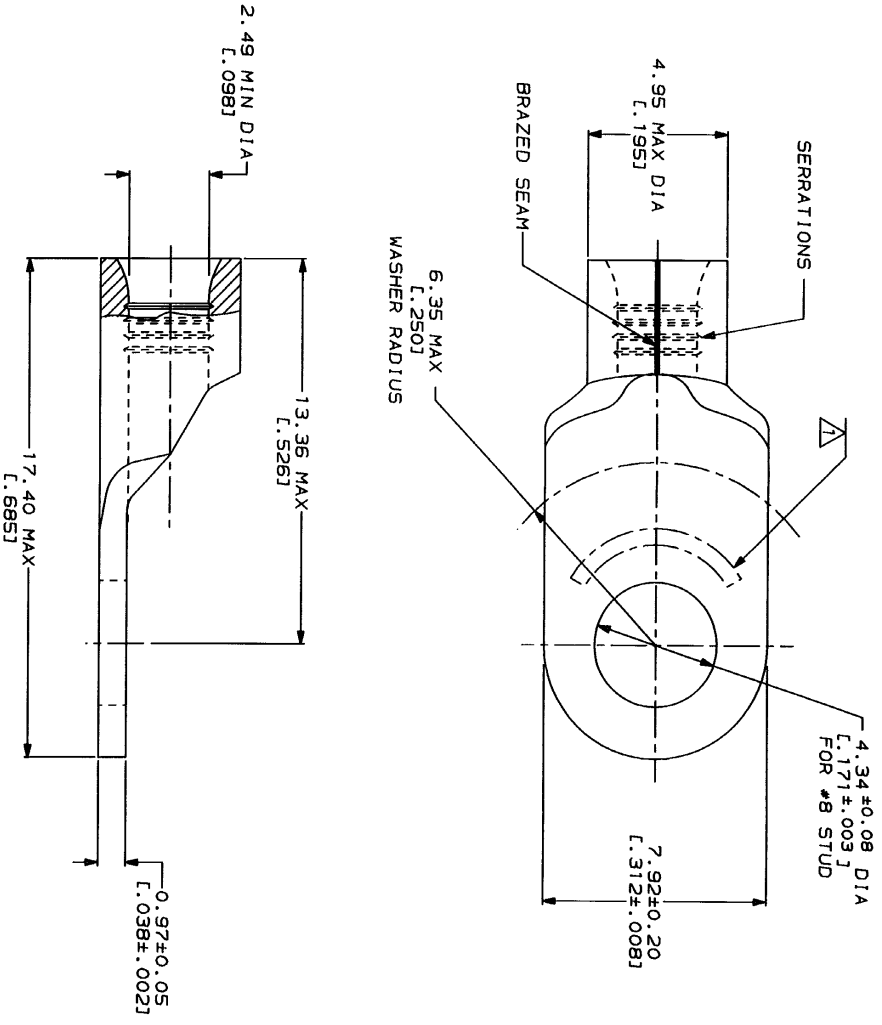
RELEASED FOR PUBLICATION
 THIS DRAWING IS UNPUBLISHED.
 BY AMP INCORPORATED. ALL INTERNATIONAL RIGHTS RESERVED.

LOC	DIST	REV	DESCRIPTION	DATE	APP'D
G	14	6	REVISED PER 0720-0033-94	3/8/94	



AMP WIRE RANGE 14-12 AWG SOLID OR STRANDED	HL Listed E13288 14-12 AWG STRANDED
LR7189 Certified 14-12 AWG SOLID OR STRANDED	MILITARY P/N AND CLASS NOT APPLICABLE

STAMP AMP 14-12* APPROX AS SHOWN



AMP INCORPORATED
CUSTOMER SERVICE SYSTEMS

FOR ADDITIONAL
 PRODUCT INFORMATION OR
 COPIES OF DRAWINGS
 AND TECHNICAL DOCUMENTS
 1-800-522-6752

FOR APPLICATION
 TOOLING ASSISTANCE CENTER
 1-800-722-1111

FOR ORDER ENTRY
 1-800-526-5142

MAX RECOMMENDED OPERATING
 TEMPERATURE:
 170°C MAX

VOLTAGE RATING:
 NOT APPLICABLE

WIRE CROSS SECTIONAL AREA RANGE:
 1.65-4.17mm² [3.260-8.230] CIR MILS
 SOLID OR STRANDED

DO NOT SCALE PRINT.
 DIMENSIONS LISTED IN PARENTHESES
 TOLERANCES IN MILLIMETERS
 3 PL DEC ± .1
 ANGLES

MATERIAL
 COPPER PER
 ASTM B-152
 ANNEALED

FINISH
 TIN PLATE
 0.00254 [1.000100] MIN
 THK PER MIL-T-10727

DR 3/9/94 DK SCRUM	OR 3/9/94 DK PATERSON
APPD 3/9/94 CH KIL WVCH	APPD 3/9/94 JL HECKLEY
PRODUCT SPEC	APPLICATION SPEC

QUANTITY	2500	ON TAPE	1	321827-0
PACKAGING TYPE	LOOSE PIECE	PART NO		321827

AMP
 AMP Incorporated
 Harrisburg, PA 17105-3608

TERMINAL, RING TONGUE,
 SOLISTRAND™

SIZE	00779	DRAWING NO	321827
SCALE	8:1	SHEET	1 OF 1

CUSTOMER DRAWING

321827