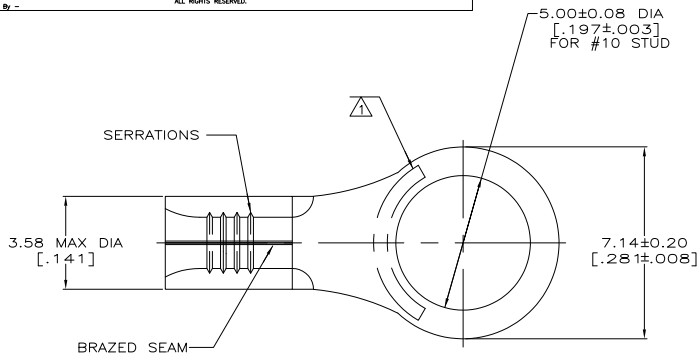


THIS DRAWING IS UNPUBLISHED. RELEASED FOR PUBLICATION. ALL RIGHTS RESERVED.

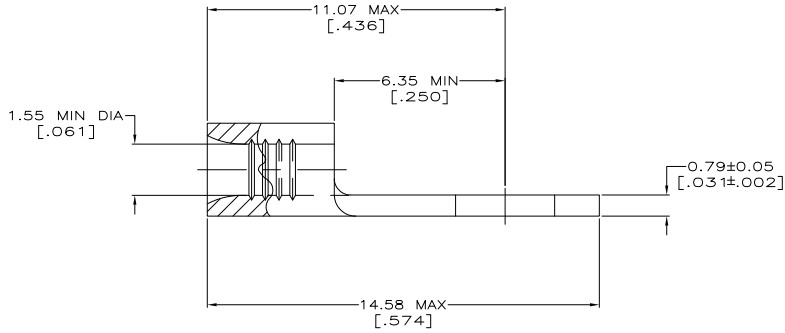
REV	DATE	DESCRIPTION	DATE	BY	APP
1					
2					
3					
4					
5					
6					
7					
8					
9					
10					
11					
12					
13					
14					
15					
16					
17					
18					
19					
20					
21					
22					
23					
24					
25					
26					
27					
28					
29					
30					
31					
32					
33					
34					
35					
36					
37					
38					
39					
40					
41					
42					
43					
44					
45					
46					
47					
48					
49					
50					
51					
52					
53					
54					
55					
56					
57					
58					
59					
60					
61					
62					
63					
64					
65					
66					
67					
68					
69					
70					
71					
72					
73					
74					
75					
76					
77					
78					
79					
80					
81					
82					
83					
84					
85					
86					
87					
88					
89					
90					
91					
92					
93					
94					
95					
96					
97					
98					
99					
100					

METRIC
DIMENSIONS LISTED IN mm [INCHES]



AMP WIRE RANGE	E13288 Listed
22-16 AWG SOLID OR STRANDED	22-16 AWG SOLID OR STRANDED
LR7189 Certified	MILITARY P/N AND CLASS
22-16 AWG SOLID OR STRANDED	NOT APPLICABLE

- △ STAMP AMP 22-18* APPROX AS SHOWN
22-16 TERMINALS ARE STAMPED 22-18 IN
ACCORDANCE WITH MILITARY SPEC MIL-7928
COMMERCIAL WIRE RANGE IS 22-16
- △ TIN PL 0.00254[.000100] MIN THK
PER MIL-T-10727
- △ GOLD PL 0.00127[.000050] MIN THK
PER MIL-G-45204 OVER NICKEL PL
0.00076[.000030] MIN THK PER QQ-N-290



AMP INCORPORATED CUSTOMER SERVICE SYSTEMS		MAX RECOMMENDED OPERATING TEMPERATURE: 170° C MAX
FOR ADDITIONAL PRODUCT INFORMATION OR COPIES OF DRAWINGS AND TECHNICAL DOCUMENTS	PRODUCT INFORMATION CENTER 1-800-522-6752	VOLTAGE RATING: NOT APPLICABLE
FOR APPLICATION TOOLING INFORMATION	TOOLING ASSISTANCE CENTER 1-800-722-1111	WIRE CROSS SECTIONAL AREA RANGE: 0.26-1.65mm ² [509-3,260] CIR MILS SOLID OR STRANDED
FOR ORDER ENTRY	1-800-526-5142	

△	100	LOOSE PIECE, BOX	8-34109-1
△	5000	ON TAPE	2-34109-2
△	1000	LOOSE PIECE	1-34109-1
△	-	LOOSE PIECE	34109
FINISH	QUANTITY	PACKAGING TYPE	PART NO

THIS DRAWING IS A CONTROLLED DOCUMENT.		BY TA BRINKMAN 3-10-93	TE TE Connectivity	
DIMENSIONS: mm [INCHES]		TO ENGRS UNLESS OTHERWISE SPECIFIED:	DATE DA PATTERSON 3-10-93	NAME DE MILLER 3-10-93
1 P/C	-	PRODUCT SPEC	SIZE	CAGE CODE
2 P/C	-	APPLICATION SPEC	A2	00779
3 P/C	-	FINISH	SCALE	10:1
4 P/C	-	WEIGHT	DRAWING NO	34109
5 P/C	-	CUSTOMER DRAWING	SHEET	1 of 1
6 P/C	-		REV	D1
7 P/C	-			
8 P/C	-			
9 P/C	-			
10 P/C	-			
11 P/C	-			
12 P/C	-			
13 P/C	-			
14 P/C	-			
15 P/C	-			
16 P/C	-			
17 P/C	-			
18 P/C	-			
19 P/C	-			
20 P/C	-			
21 P/C	-			
22 P/C	-			
23 P/C	-			
24 P/C	-			
25 P/C	-			
26 P/C	-			
27 P/C	-			
28 P/C	-			
29 P/C	-			
30 P/C	-			
31 P/C	-			
32 P/C	-			
33 P/C	-			
34 P/C	-			
35 P/C	-			
36 P/C	-			
37 P/C	-			
38 P/C	-			
39 P/C	-			
40 P/C	-			
41 P/C	-			
42 P/C	-			
43 P/C	-			
44 P/C	-			
45 P/C	-			
46 P/C	-			
47 P/C	-			
48 P/C	-			
49 P/C	-			
50 P/C	-			
51 P/C	-			
52 P/C	-			
53 P/C	-			
54 P/C	-			
55 P/C	-			
56 P/C	-			
57 P/C	-			
58 P/C	-			
59 P/C	-			
60 P/C	-			
61 P/C	-			
62 P/C	-			
63 P/C	-			
64 P/C	-			
65 P/C	-			
66 P/C	-			
67 P/C	-			
68 P/C	-			
69 P/C	-			
70 P/C	-			
71 P/C	-			
72 P/C	-			
73 P/C	-			
74 P/C	-			
75 P/C	-			
76 P/C	-			
77 P/C	-			
78 P/C	-			
79 P/C	-			
80 P/C	-			
81 P/C	-			
82 P/C	-			
83 P/C	-			
84 P/C	-			
85 P/C	-			
86 P/C	-			
87 P/C	-			
88 P/C	-			
89 P/C	-			
90 P/C	-			
91 P/C	-			
92 P/C	-			
93 P/C	-			
94 P/C	-			
95 P/C	-			
96 P/C	-			
97 P/C	-			
98 P/C	-			
99 P/C	-			
100 P/C	-			

1471-9 (5/11)