

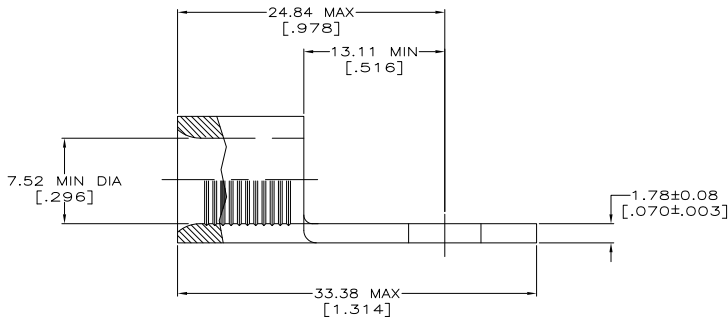
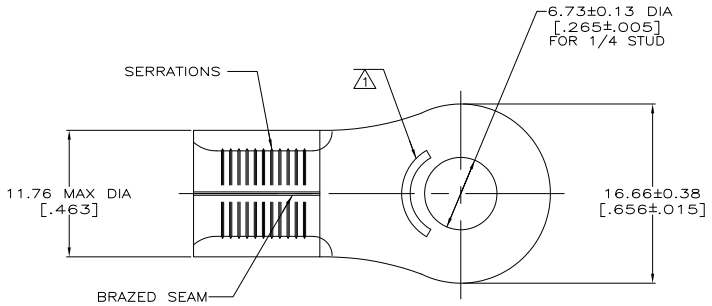
THE DRAWING IS UNPUBLISHED. RELEASED FOR PUBLICATION. ALL RIGHTS RESERVED.

| LOC | REV | DESCRIPTION | DATE | BY | APP |
|-----|-----|---------------------------|---------|----|-----|
| G | 14 | REVISED PER ECO-11-004820 | 11MAR11 | RK | HMR |

METRIC
DIMENSIONS LISTED IN mm [INCHES]

| | |
|----------------------------|---------------------------|
| AMP WIRE RANGE | E13288 Listed |
| 4 AWG SOLID OR STRANDED | 4 AWG STRANDED |
| LR7189 Certified | MILITARY P/N AND CLASS |
| 4 AWG SOLID OR STRANDED | NOT APPLICABLE |

△ STAMP AMP 4* APPROX AS SHOWN



| | | |
|---|--|---|
| AMP INCORPORATED CUSTOMER SERVICE SYSTEMS | | MAX RECOMMENDED OPERATING TEMPERATURE: 170° C MAX |
| FOR ADDITIONAL PRODUCT INFORMATION OR COPIES OF TECHNICAL DOCUMENTS | PRODUCT INFORMATION CENTER 1-800-522-6752 | VOLTAGE RATING: NOT APPLICABLE |
| FOR APPLICATION TOOLING INFORMATION | TOOLING ASSISTANCE CENTER 1-800-722-1111 | WIRE CROSS SECTIONAL AREA RANGE: 16.8-26.7mm ² [33,100-52,600] CIR MILS SOLID OR STRANDED |
| FOR ORDER ENTRY | 1-800-526-5142 | THIS DRAWING IS A CONTROLLED DOCUMENT FOR AMP INCORPORATED. IT IS SUBJECT TO CHANGE AND THE CONTROLLING ENGINEERING ORGANIZATION SHOULD BE CONTACTED FOR THE LATEST REVISION. |

| | | |
|----------|------------------|-----------|
| 25 | LOOSE PIECE, BAG | 8-33469-5 |
| 50 | LOOSE PIECE, BOX | 8-33469-2 |
| 500 | ON TAPE, REEL | 2-33469-4 |
| 500 | LOOSE PIECE, BOX | 2-33469-2 |
| - | LOOSE PIECE | 33469 |
| QUANTITY | PACKAGING TYPE | PART NO |

| | | | | |
|--|--|----------------------------------|--|-----------------|
| THIS DRAWING IS A CONTROLLED DOCUMENT. | | BY TA BRINKMAN 3-29-93 | TE TE Connectivity | |
| DRAWING NO. 00779 | | CHK DA PATTERSON 3-29-93 | TERMINAL, RING TONGUE, SOLISTRAND TM | |
| MATERIAL: COPPER PER ASTM B-152 ANNEALED | | APPROVED DE MILLER 3-29-93 | SIZE A2 | RESTRICTED TO |
| FINISH: EN PLATE 0.00254±0.00103 MIN THK PER MIL-C-11722 | | PRODUCT SPEC | DRAWING NO 00779 | REV 1 |
| CUSTOMER DRAWING | | APPLICATION SPEC | SCALE 4:1 | SHEET 1 of 1 |