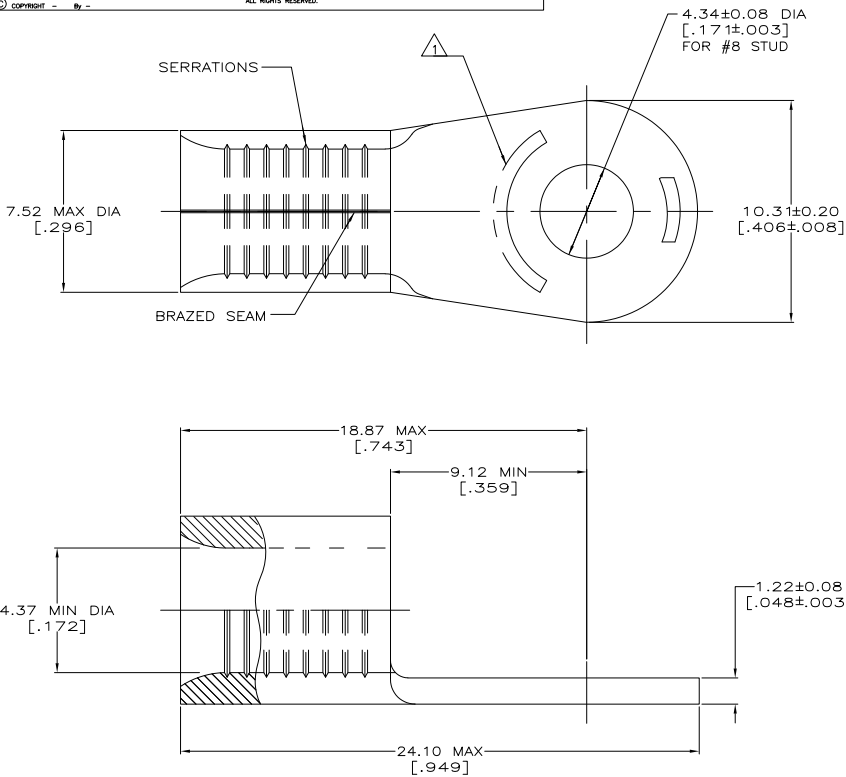


THIS DRAWING IS UNPUBLISHED. RELEASED FOR PUBLICATION. ALL RIGHTS RESERVED.

REV	DATE	DESCRIPTION	BY	APPD
1	11MAR11	REVISED PER ECO-11-004587	RK	HMR

AMP
WIRE RANGE
8 AWG
SOLID OR STRANDED

- 1 STAMP AMP 8* 14 APPROX AS SHOWN
 - 2 COPPER PER ASTM B-152, ANNEALED
 - 3 UL LISTED E13288, 8 AWG STRANDED
 - 4 CSA CERTIFIED LR7189, 8 AWG STRANDED
 - 5 MILITARY MS20659-140 CLASS 2
 - 6 TIN PLATE 0.00254 [.000100] MIN THK PER ASTM B545
 - 7 NICKEL PLATE 0.00762 [.000300] MIN THK PER QQ-N-290.
 - 8 TIN-LEAD (60-40) PLATE 0.00254 [.000100] MIN THK PER SAE-AMS-P-81728
 - 9 TIN-LEAD (93-7) PLATE 0.00254 [.000100] MIN THK PER ASTM-B545 (3% MIN LEAD CONTENT)
 - 10 LONGER WIRE BARREL THAN OTHER #8 AWG; PROPER WIRE STRIP LENGTH: 9.12-9.94 [.359-.390]; IGNORE TOOLING INSTRUCTION SHEET STRIP LENGTH
- 11 PRELIMINARY - NOT FOR PRODUCTION



3 4	170°C	1500	324061 ON TAPE	6	11 3-324061-1
---	343°C	----	LOOSE PIECE	7	2-324061-5
---	170°C	100	LOOSE PIECE	9	11 324061-2
---	170°C	50	LOOSE PIECE	8	11 324061-1
3 4 5	170°C	100	LOOSE PIECE	6	324061
APPROVALS	MAX OPERATING TEMPERATURE	QTY	PACKAGE TYPE	FINISH	PART NO.

AMP INCORPORATED CUSTOMER SERVICE SYSTEMS		MAX RECOMMENDED OPERATING TEMPERATURE: SEE TABLE
FOR ADDITIONAL PRODUCT INFORMATION OR COPIES OF DRAWINGS AND TECHNICAL DOCUMENTS	PRODUCT INFORMATION CENTER 1-800-522-6752	VOLTAGE RATING: N/A
FOR APPLICATION TOOLING INFORMATION	TOOLING ASSISTANCE CENTER 1-800-722-1111	CIRCULAR MIL AREA: 6.64-10.5mm ² [13,100-20,800] SOLID OR STRANDED
FOR ORDER ENTRY	1-800-526-5142	THIS DRAWING IS A CONTROLLED DOCUMENT FOR AMP INCORPORATED. IT IS SUBJECT TO CHANGE AND THE CONTROLLING ENGINEERING ORGANIZATION SHOULD BE CONTACTED FOR THE LATEST REVISION.

THIS DRAWING IS A CONTROLLED DOCUMENT.		DATE	BY	APPROVED
DIMENSIONS: mm [INCHES]		3-24-93	TA BRINKMAN	3-24-93
TOLERANCES UNLESS OTHERWISE SPECIFIED:		3-24-93	DA PATTERSON	3-24-93
APPROVALS:		3-24-93	JL MECKLEY	3-24-93
MATERIAL:		PRODUCT SPEC	APPLICATION SPEC	WEIGHT
SEE TABLE		FINISH	SEE TABLE	2.99 GRAMS
CUSTOMER DRAWING		SIZE	A2	QAGE CODE
		DRAWING NO	00779	©=324061
		RESTRICTED TO	RE S2	
		SCALE	8:1	SHEET 1 of 1

1471-9 (5/11)

324061

A