

4

3

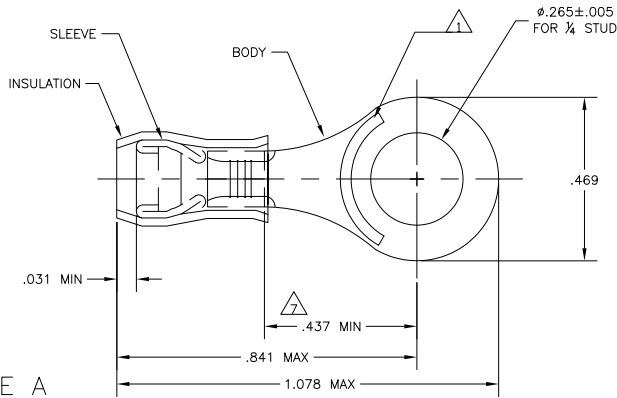
2

1

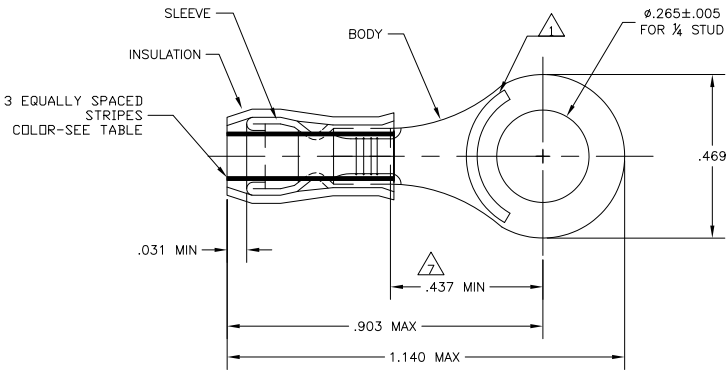
THIS DRAWING IS UNPUBLISHED. RELEASED FOR PUBLICATION. ALL RIGHTS RESERVED.

LOC	DIST	REV	DESCRIPTION	DATE	BY	APPD
G	14	N3	REVISED PER ECO-11-004820	11MAR11	RK	HMR

<b>AMP</b> WIRE RANGE	E13288 Listed	LR7189 Certified
16-14 AWG SOLID OR STRANDED	16-14 AWG SOLID OR STRANDED	16-14 AWG SOLID OR STRANDED



STYLE A



STYLE B  
INSULATION RESTRICTING

- △ STAMP "AMP - SEE TABLE" APPROX AS SHOWN
- 2 WIRE INSULATION DIA: SEE TABLE
- 3 TONGUE MATERIAL THK: .031±.002
- △ 4 BODY: TIN PLATE .000100 MIN EXT THK PER ASTM B545
- △ 5 SLEEVE: TIN PLATE .000100 MIN EXT THK PER ASTM B545
- △ 6 BODY & SLEEVE- CU PER ASTM B152  
INSULATION - NYLON PER ASTM D4066  
COLOR - BLUE
- △ APPLIES FROM EDGE OF METAL WIRE BARREL TO CENTER OF STUD HOLE.
- △ 8 MEETS MS25036-154, CLASS 1 & 2
- △ 9 MEETS MS25036-154, CLASS 2
- △ 10 MEETS M7928/1-43, CLASS 1 & 2
- △ 11 MEETS M7928/1-52, CLASS 1 & 2

QTY	PACKAGE TYPE	STAMPING	WIRE INSUL DIA	WIRE SIZE	STRIPES COLOR	STYLE	BODY FINISH	SLEEVE FINISH	PART NO
100	LOOSE PIECE, BOX	16-14	.105-.150	16-14	--	A			8-320563-1
500	320563-4 ON TAPE	14	.078-.130	14	GREEN	B			2-320563-6
500	320563-3 ON TAPE	16	.063-.130	16	BLUE	B			2-320563-5
500	LOOSE PIECE	14	.078-.130	14	GREEN	B	△ 4	△ 5	2-320563-4
500	LOOSE PIECE	16	.063-.130	16	BLUE	B	△ 4	△ 5	2-320563-3
500	320563 ON TAPE	16-14	.105-.150	16-14	--	A			2-320563-2
500	LOOSE PIECE	16-14	.105-.150	16-14	--	A			320563

CUSTOMER SERVICE SYSTEMS	
FOR ADDITIONAL PRODUCT INFORMATION OR COPIES OF DRAWINGS AND TECHNICAL DOCUMENTS	PRODUCT INFORMATION CENTER 1-800-522-6752
FOR APPLICATION	TOOLING ASSISTANCE CENTER
TOOLING INFORMATION	1-800-722-1111
FOR ORDER ENTRY	1-800-526-5142

MAX RECOMMENDED OPERATING TEMPERATURE: 105°C MAX	VOLTAGE RATING: 300 VOLT MAX	CIRCULAR MIL AREA: 1.02-2.62mm <sup>2</sup> (2,050-5,180) STRANDED OR SOLID
---	---------------------------------	---

THIS DRAWING IS A CONTROLLED DOCUMENT.	DATE: 13MAY10	BY: J.R. RUTH	CHK: T. MICHELJUTTI	DATE: 13MAY10	BY: T. MICHELJUTTI	CHK: T. MICHELJUTTI	DATE: 13MAY10	BY: T. MICHELJUTTI
DIMENSIONS: INCHES	OTHER DIMENSIONS: MILLIMETERS	FINISH: 0 PLG ± .008, 1 PLG ± .008, 2 PLG ± .008, 3 PLG ± .008, 4 PLG ± .008, 5 PLG ± .008	MATERIAL: -△ 6	TERMINAL, RING TONGUE, PIDG	WIRE SIZE: 16-14 AWG	RESTRICTED TO: -		
CUSTOMER DRAWING	SCALE: 5:1	SHEET: 1 of 1	REV: N3					