

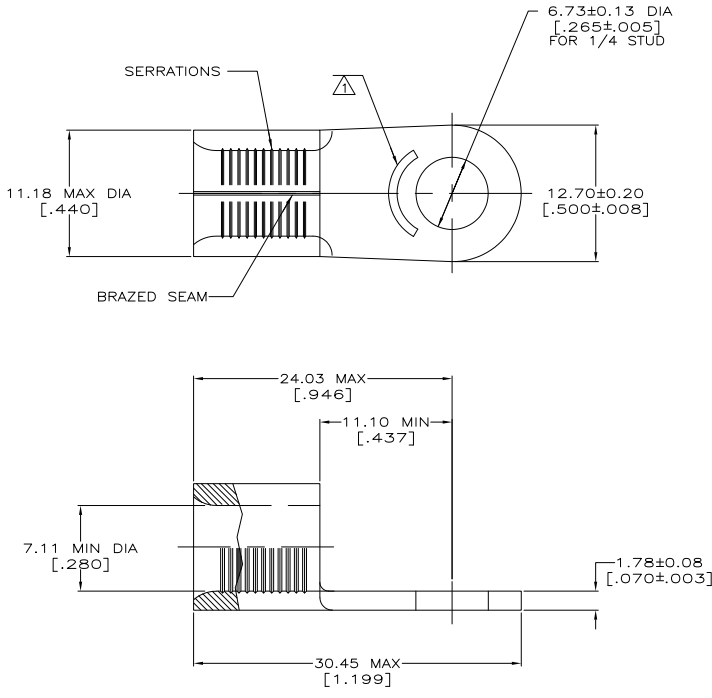
THIS DRAWING IS UNPUBLISHED. RELEASED FOR PUBLICATION. ALL RIGHTS RESERVED.

REV	DATE	DESCRIPTION	BY	APP
1	11MAR11	REVISED PER ECO-11-004820	RK	HMR



<b>AMP</b> WIRE RANGE	E13288 Listed
4 AWG SOLID OR STRANDED	4 AWG STRANDED
<b>LR7189</b> Certified	MILITARY P/N AND CLASS
4 AWG SOLID OR STRANDED	MS 20659-111 CLASS 2 P/N 31811 ONLY

△ STAMP AMP 4W\* APPROX AS SHOWN



AMP INCORPORATED CUSTOMER SERVICE SYSTEMS		MAX RECOMMENDED OPERATING TEMPERATURE: 170° C MAX
FOR ADDITIONAL PRODUCT INFORMATION OR COPIES OF DRAWINGS AND TECHNICAL DOCUMENTS	PRODUCT INFORMATION CENTER 1-800-522-6752	VOLTAGE RATING: NOT APPLICABLE
FOR APPLICATION TOOLING INFORMATION	TOOLING ASSISTANCE CENTER 1-800-722-1111	WIRE CROSS SECTIONAL AREA RANGE: 16.8-26.7mm <sup>2</sup> [33,100-52,600] CIR MILS SOLID OR STRANDED
FOR ORDER ENTRY	1-800-526-5142	THIS DRAWING IS A CONTROLLED DOCUMENT FOR AMP INCORPORATED. IT IS SUBJECT TO CHANGE AND THE CONTROLLING ENGINEERING ORGANIZATION SHOULD BE CONTACTED FOR THE LATEST REVISION.

500	ON TAPE, REEL	2-31811-5
500	LOOSE PIECE, BOX	2-31811-3
-	LOOSE PIECE	31811
QTY	PACKAGING TYPE	PART NO

THIS DRAWING IS A CONTROLLED DOCUMENT.		BY TA BRINKMAN 3-29-93	DATE 3-29-93
DRAWING NO A200779		CHKD DA PATTERSON 3-29-93	DATE 3-29-93
MATERIAL COPPER PER ASTM B-152 ANNEALED		FINISH TIN PLATE 0.0025 (0.010) MM PER FIG. 6C-1 (0.010)	WEIGHT -
DIMENSIONS mm[INCHES]		APPROVALS APPROVED DE MILLER 3-29-93	PRODUCT SPEC -
APPLICATION SPEC -		SIZE A2	CAGE CODE 00779
DRAWING NO 31811		SCALE 4:1	SHEET 1 of 1
CUSTOMER DRAWING		RESTRICTED TO -	REV H1

1471-9 (5/11)