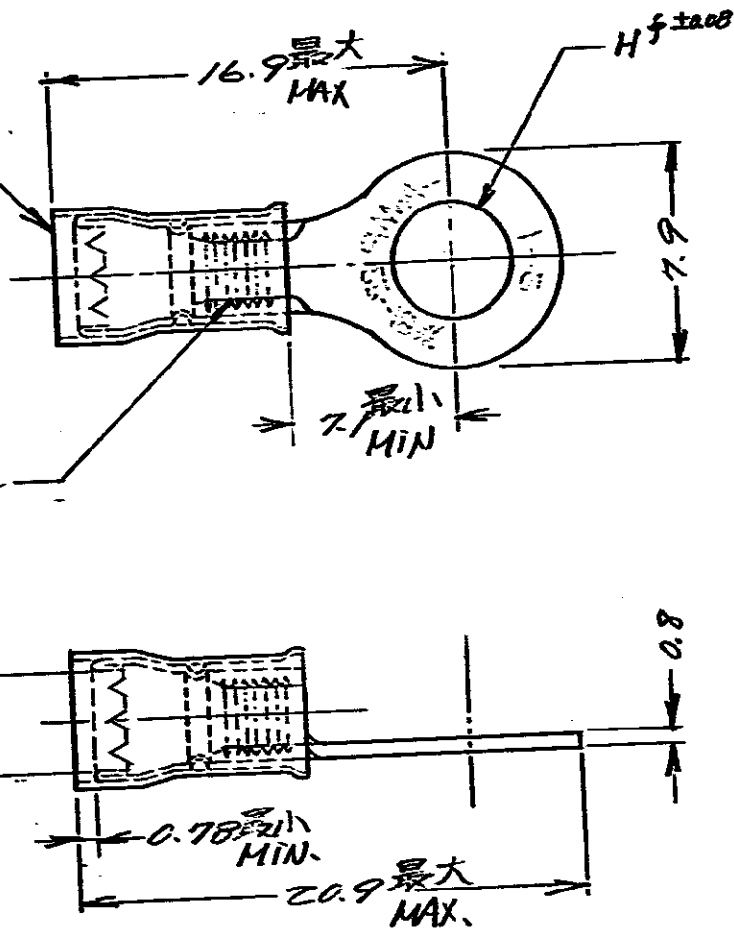


赤色被覆
RED INS.

SERATION
セレーション

(表参照) (SEE TABLE)
被覆外径 INS. DIA



(P/N)	(STUD)	(H DIA)	(INS. DIA)
型番	スタッド	H-J法	被覆外径
171506-1	#8	4.34	2.03~3.18
-2	#10	5.00	2.03~3.18
-3	#8	4.34	2.67~3.56
-4	#10	5.00	2.67~3.56
OBSELETE	#12	5.66	2.03~3.18
-6	特別	5.79	2.67~3.56
-7	5mm	5.26	2.03~3.18
-8	5mm	5.26	2.67~3.56
OBSELETE	#6	3.68	2.03~3.18

DIMENSIONS IN MM DO NOT SCALE PRINT

参考図面
(CUSTOMER COPY
REFERENCE ONLY)

AMP (JAPAN), LTD.
Tokyo, Japan

D1	OBSELETE (REV. B) F.N. 4/7	6/16	93
D	REVISED (REV. B) P-DWG. 7.4.4.5	6/16	93
C	REVISED (REV. B) S.O. 4/7	1/16	93
E	ADDED MARK H.S. 4/11	8/15	
A	REVISED (REV. B) H.S. 4/11	7/17	
O	DATE 3/20/93		
4	LTR. 変更 (REVISION RECORD)	DR.	CHK. DATE

MATERIAL	有光銅
WIRE RANGE	0.26 ~ 1.04 mm AWG22-18
INSULATION CL.	表参照
TOLERANCE	±0.4
EXCEPT	±1.0
(AS NOTED)	
TYPE NAME	丸型端子 RING TERMINAL

AMP

CLASS

TYPE

JAC-171506 D1